



MARYLAND
Department of Health

Public Health Preparedness and Situational Awareness Report: #2021:18

Reporting for the week ending 05/08/21 (MMWR Week #18)

May 14th, 2021

CURRENT HOMELAND SECURITY THREAT LEVELS

National: No Active Alerts

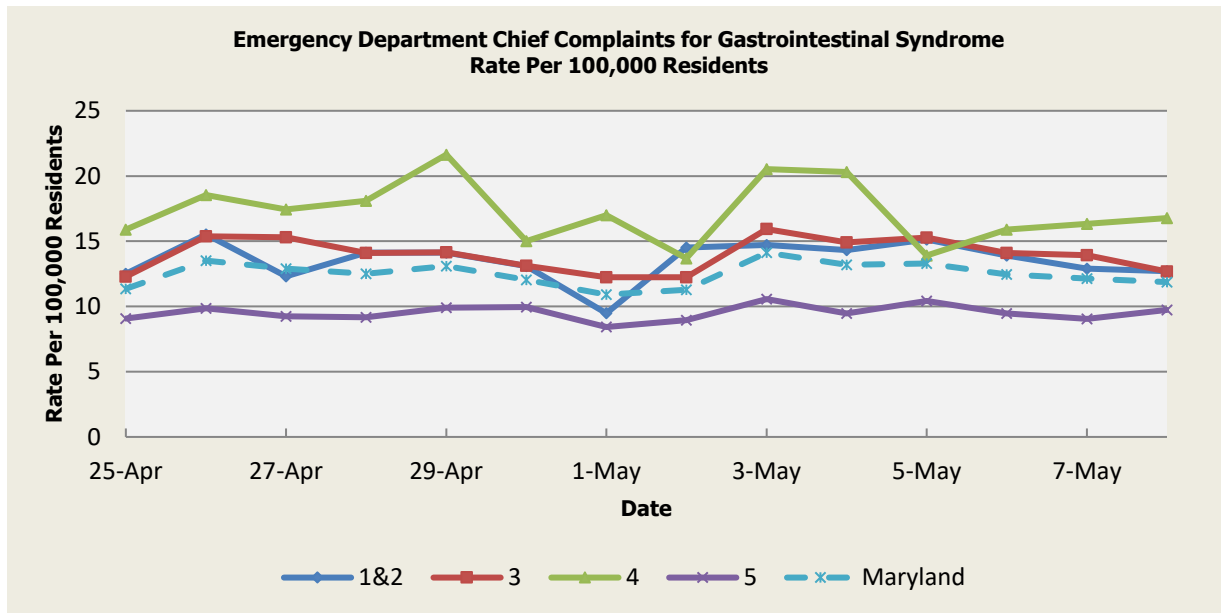
Maryland: **ENHANCED (MEMA status)**

SYNDROMIC SURVEILLANCE REPORTS

ESSENCE (Electronic Surveillance System for the Early Notification of Community-based Epidemics): Graphical representation is provided for all syndromes (excluding the “Other” category; see Appendix 1) by Health and Medical Regions (See Appendix 2). Emergency department chief complaint data is presented as rates per 100,000 residents using data from the 2010 census. Electronic Surveillance System for the Early Notification of Community-Based Epidemics (ESSENCE). Baltimore, MD: Maryland Department of Health; 2021.

(report continues on next page)

Gastrointestinal Syndrome



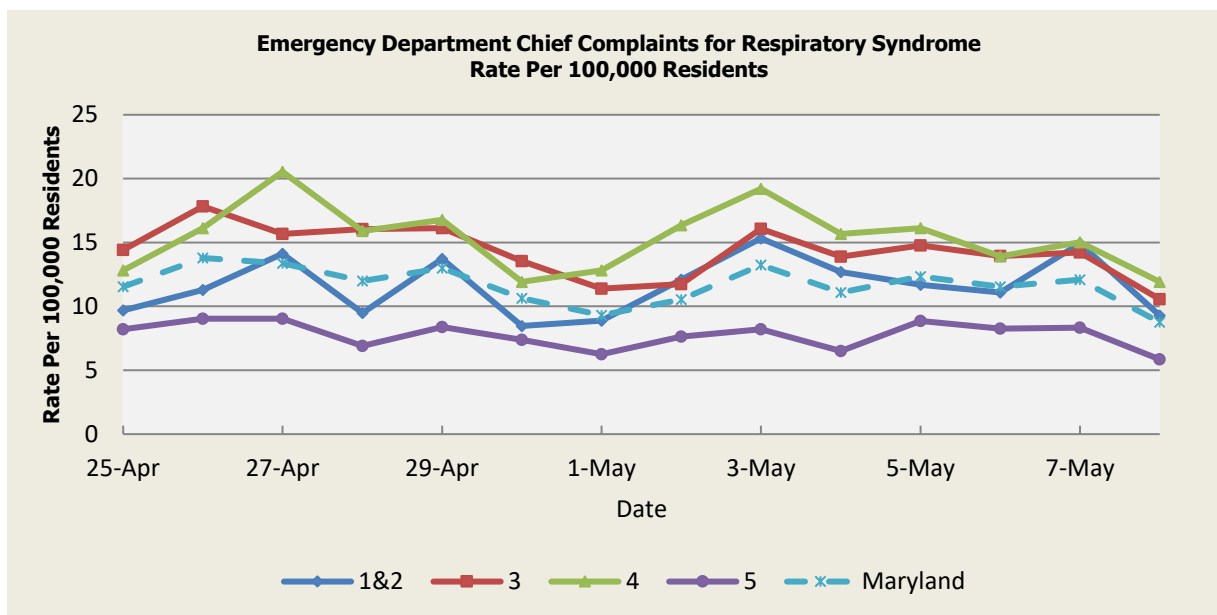
There were two (2) Gastrointestinal Syndrome outbreaks reported this week: one (1) outbreak of Gastroenteritis in a Daycare Facility (Region 3) and one (1) outbreak of Gastroenteritis/Foodborne in a Restaurant (Region 4).

Gastrointestinal Syndrome Baseline Data January 1, 2010 - Present					
Health Region	1&2	3	4	5	Maryland
Mean Rate*	13.13	14.73	15.83	10.05	12.89
Median Rate*	13.11	14.61	15.46	10.00	12.83

* Per 100,000 Residents

(report continues on next page)

Respiratory Syndrome



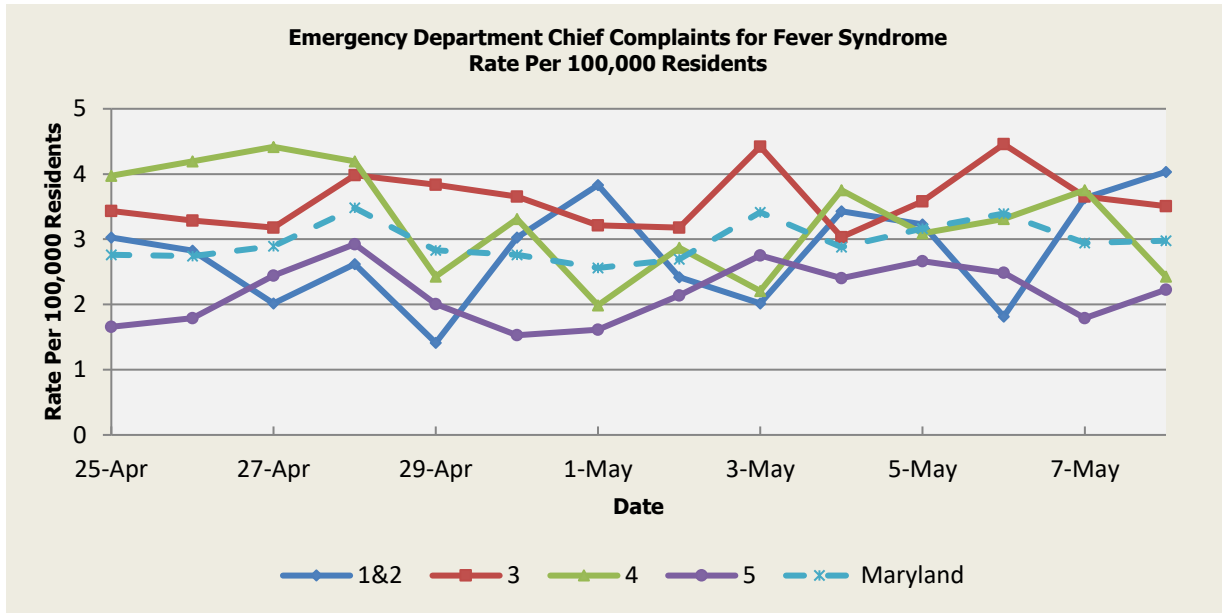
There were seventy-five (75) Respiratory Syndrome outbreaks reported this week: two (2) outbreaks of COVID-19 in Adult Medical Daycare Facilities (Region 3), six (6) outbreaks of COVID-19 in Assisted Living Facilities (Regions 3,5), one (1) outbreak of COVID-19 in a Behavioral Health Facility (Region 5), two (2) outbreaks of COVID-19 in a Correctional Facility (Regions 3,5), sixteen (16) outbreaks of COVID-19 in Daycare Facilities (Regions 3,4,5), one (1) outbreak of COVID-19 in Group Home/Residential School (Region 4), four (4) outbreaks of COVID-19 in Hospitals (Region 3), one (1) outbreak of COVID-19 in an Institute of Higher Education (Region 3), one (1) outbreak of COVID-19 in an Outpatient Facility (Region 3), sixteen (16) outbreaks of COVID-19 in Schools (Regions 1&2,3,4,5), one (1) outbreak of COVID-19 in a Shelter (Region 3), five (5) outbreaks of COVID-19 in Substance Use Treatment Programs (Region 3), one (1) outbreak of COVID-19 in a Transitional Housing Facility (Region 3), two (2) outbreaks of COVID-19 in Workplaces (Region 3,5)

Respiratory Syndrome Baseline Data January 1, 2010 - Present					
Health Region	1&2	3	4	5	Maryland
Mean Rate*	12.44	14.69	15.21	9.90	12.71
Median Rate*	12.10	14.03	14.35	9.47	12.15

* Per 100,000 Residents

(report continues on next page)

Fever Syndrome



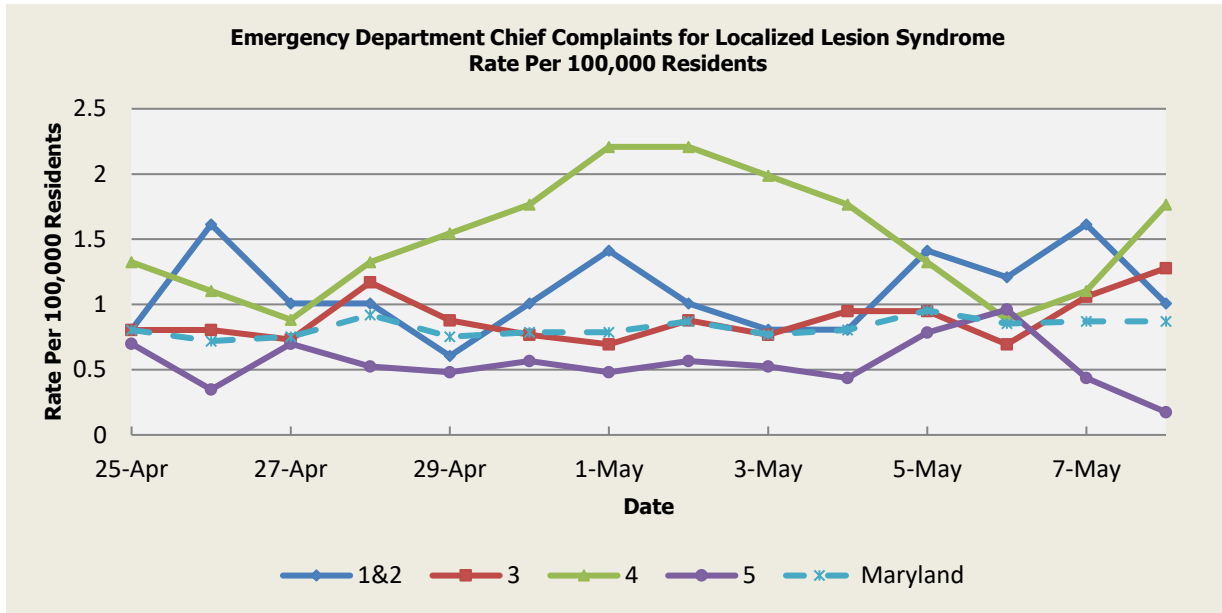
There were no Fever Syndrome outbreaks reported this week.

Fever Syndrome Baseline Data January 1, 2010 - Present					
Health Region	1&2	3	4	5	Maryland
Mean Rate*	3.03	3.87	4.10	2.99	3.48
Median Rate*	2.82	3.73	3.97	2.88	3.35

*Per 100,000 Residents

(report continues on next page)

Localized Lesion Syndrome



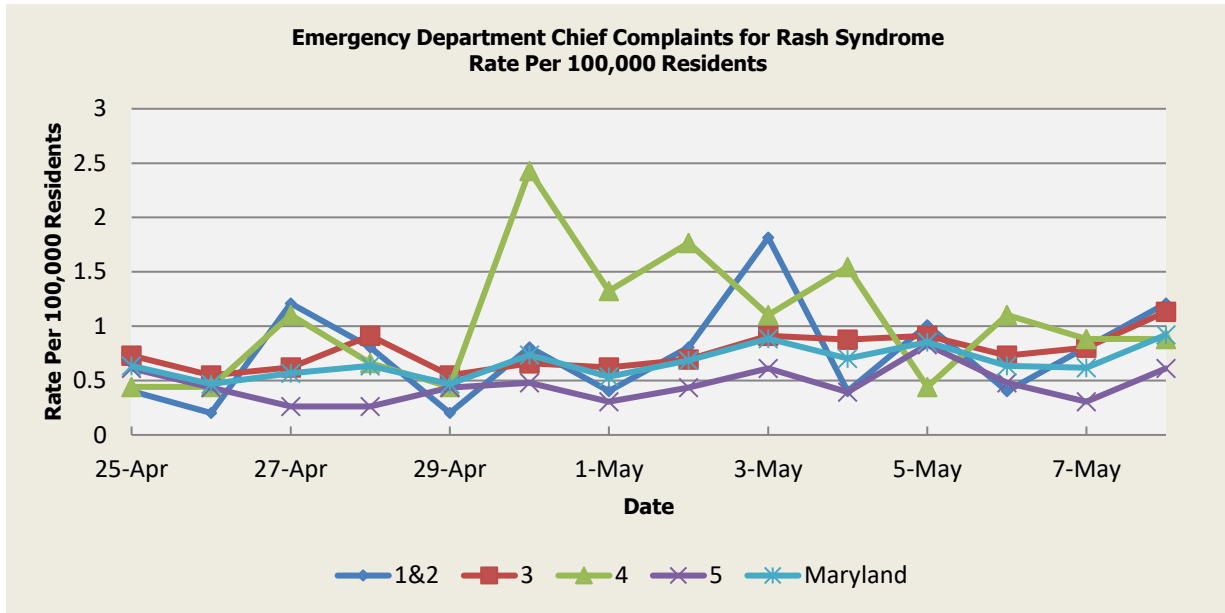
There were no Localized Lesion Syndrome outbreaks reported this week.

Localized Lesion Syndrome Baseline Data January 1, 2010 - Present					
Health Region	1&2	3	4	5	Maryland
Mean Rate*	1.15	1.67	1.95	0.85	1.34
Median Rate*	1.01	1.64	1.77	0.83	1.29

* Per 100,000 Residents

(report continues on next page)

Rash Syndrome



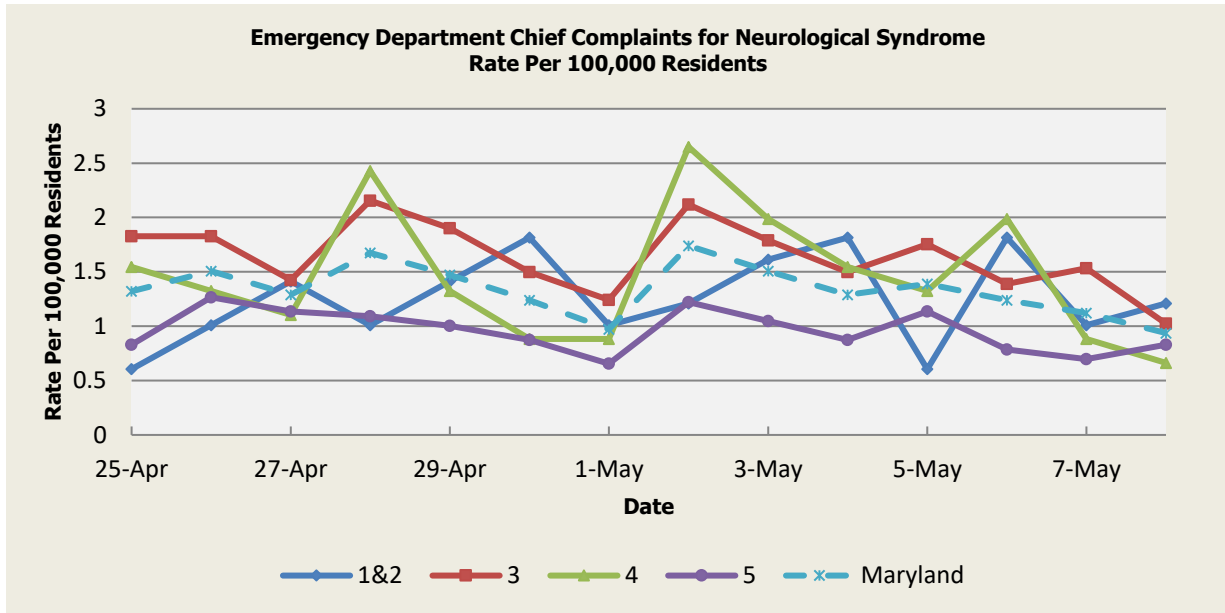
There were no Rash Syndrome outbreak reported this week.

Rash Syndrome Baseline Data January 1, 2010 - Present					
Health Region	1&2	3	4	5	Maryland
Mean Rate*	1.18	1.56	1.65	0.91	1.28
Median Rate*	1.01	1.53	1.55	0.87	1.25

* Per 100,000 Residents

(report continues on next page)

Neurological Syndrome



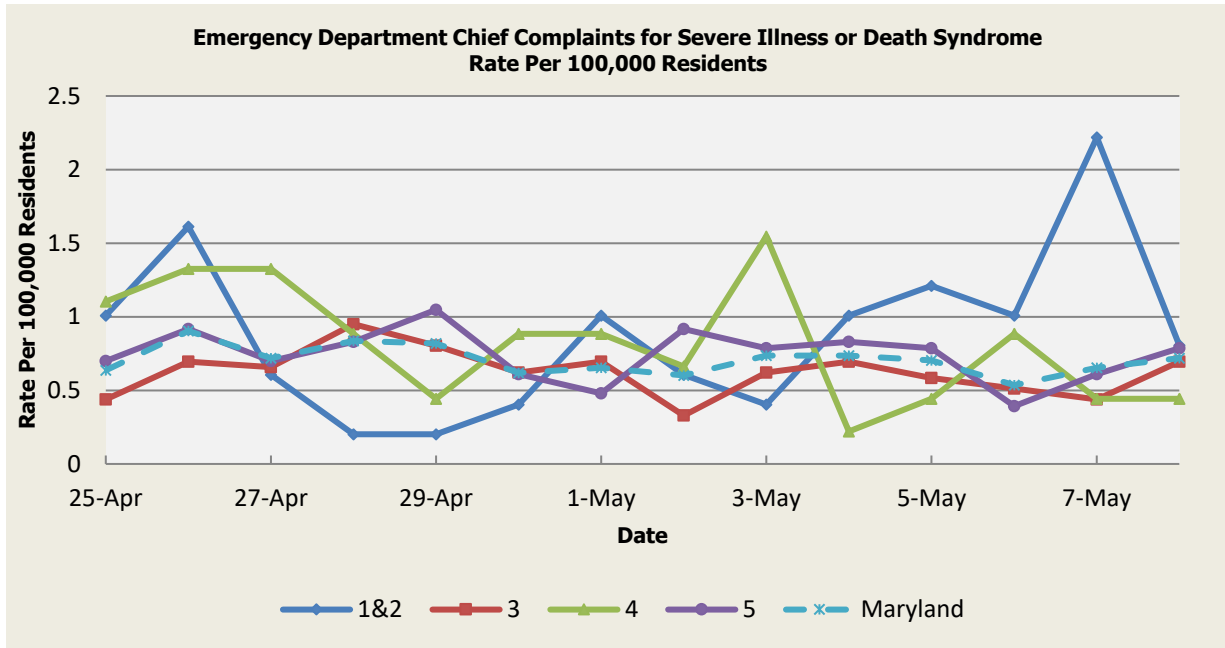
There were no Neurological Syndrome outbreaks reported this week.

Neurological Syndrome Baseline Data January 1, 2010 - Present					
Health Region	1&2	3	4	5	Maryland
Mean Rate*	0.83	1.02	0.95	0.66	0.86
Median Rate*	0.81	0.99	0.88	0.61	0.84

* Per 100,000 Residents

(report continues on next page)

Severe Illness or Death Syndrome



There were no Severe Illness or Death Syndrome outbreaks reported this week.

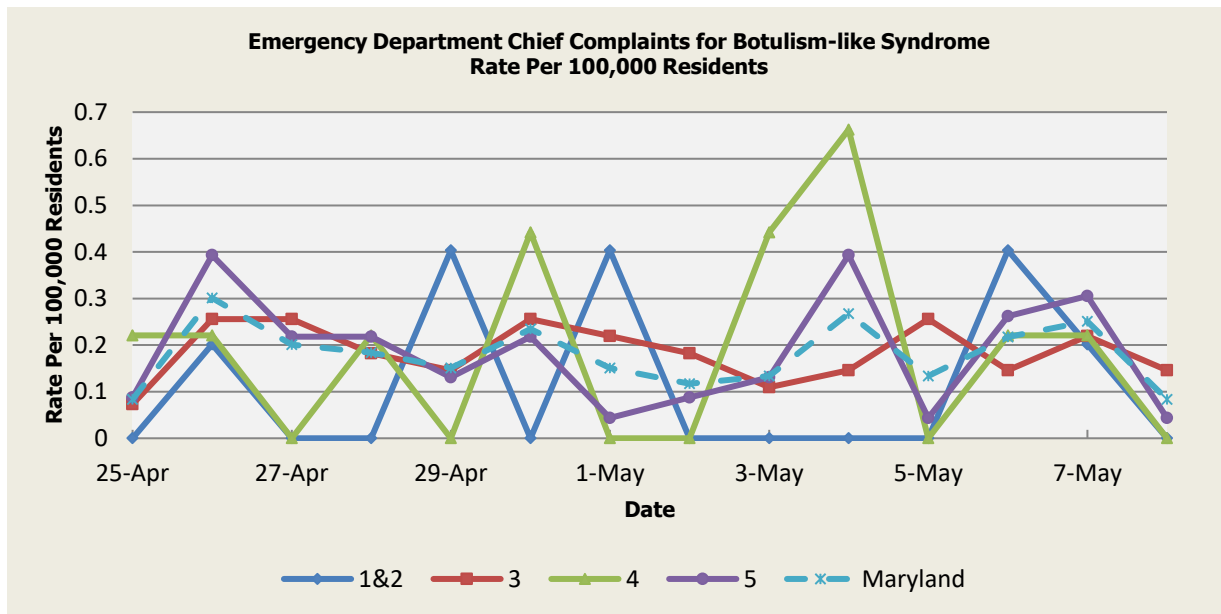
Severe Illness or Death Syndrome Baseline Data January 1, 2010 - Present					
Health Region	1&2	3	4	5	Maryland
Mean Rate*	0.66	0.87	0.84	0.55	0.73
Median Rate*	0.60	0.84	0.88	0.52	0.70

* Per 100,000 Residents

(report continues on next page)

SYNDROMES RELATED TO CATEGORY A AGENTS

Botulism-like Syndrome



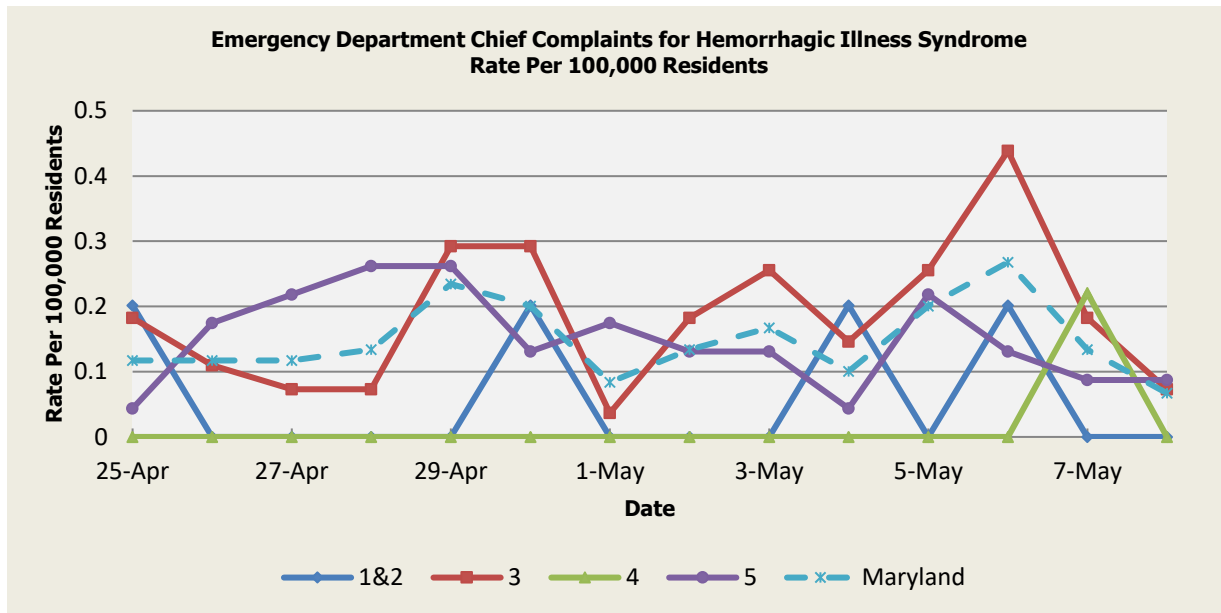
There was an appreciable increase above baseline in the rate of ED visits for Botulism-like Syndrome on 4/25 (Region 4), 4/26 (Regions 1&2,4,5), 4/27 (Region 5), 4/28 (Regions 4,5), 4/29 (Regions 1&2), 4/30 (Regions 4,5), 5/1 (Regions 1&2), 5/3 (Region 4), 5/4 (Regions 4,5), 5/6 (Regions 1&2,4,5), 5/7 (Regions 1&2,4,5). These increases are not known to be associated with any outbreaks.

Botulism-like Syndrome Baseline Data January 1, 2010 - Present					
Health Region	1&2	3	4	5	Maryland
Mean Rate*	0.08	0.14	0.07	0.09	0.11
Median Rate*	0.00	0.11	0.00	0.09	0.10

* Per 100,000 Residents

(report continues on next page)

Hemorrhagic Illness Syndrome



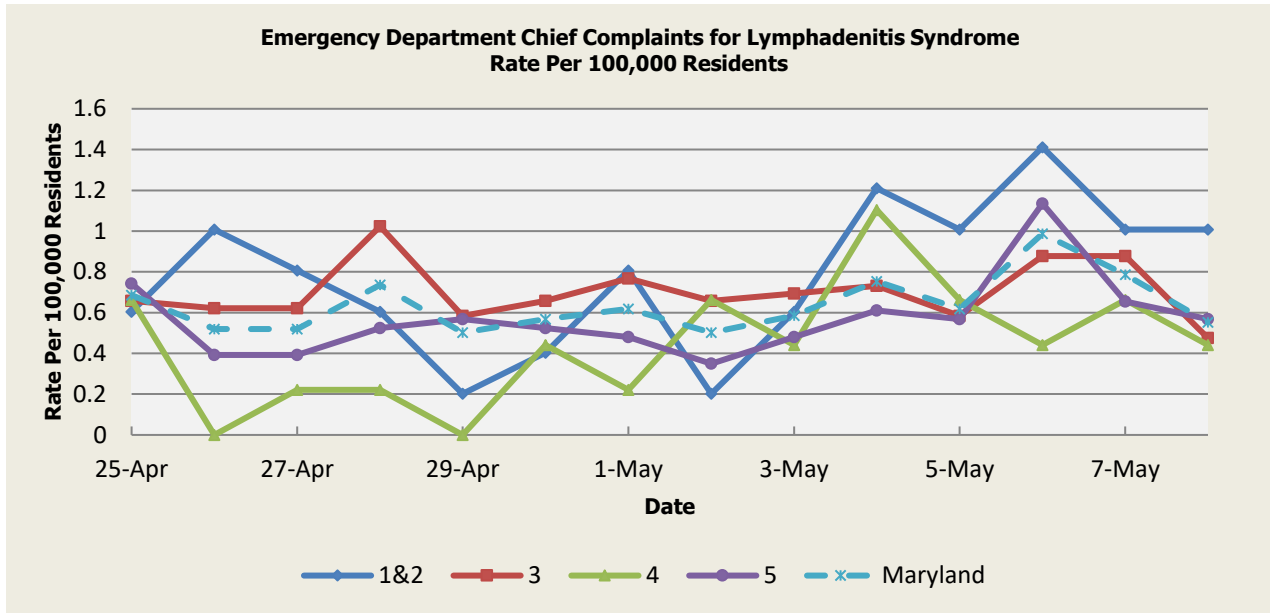
There was an appreciable increase above baseline in the rate of ED visits for Hemorrhagic Illness Syndrome on 4/25 (Regions 1&2), 4/30 (Regions 1&2), 4/4 (Regions 1&2), 4/6 (Regions 1&2,3), 4/7 (Region 4). These increases are not known to be associated with any outbreaks.

Hemorrhagic Illness Syndrome Baseline Data January 1, 2010 - Present					
Health Region	1&2	3	4	5	Maryland
Mean Rate*	0.05	0.17	0.04	0.15	0.14
Median Rate*	0.00	0.11	0.00	0.09	0.12

* Per 100,000 Residents

(report continues on next page)

Lymphadenitis Syndrome



There was an appreciable increase above baseline in the rate of ED visits for Lymphadenitis Syndrome on 4/26 (Regions 1&2), 4/4 (Regions 1&2,4), 4/5 (Regions 1&2), 4/6 (Regions 1&2,5), 4/7 (Regions 1&2), 4/8 (Regions 1&2). These increases are not known to be associated with any outbreaks.

Lymphadenitis Syndrome Baseline Data January 1, 2010 - Present					
Health Region	1&2	3	4	5	Maryland
Mean Rate*	0.41	0.61	0.41	0.40	0.50
Median Rate*	0.40	0.55	0.44	0.35	0.47

* Per 100,000 Residents

(report continues on next page)

MARYLAND REPORTABLE DISEASE SURVEILLANCE

Coronavirus Disease 2019 (COVID-19) Situation Summary

On March 5th, 2020, the Maryland Department of Health announced the first cases of coronavirus disease 2019 (abbreviated COVID-19) in the State of Maryland.

Confirmed COVID-19 Case Counts in Maryland by County (As of May 14th, 2021)

County	Number of Confirmed Cases
Allegany	6,921
Anne Arundel	43,359
Baltimore City	64,882
Baltimore County	52,203
Calvert	4,189
Caroline	2,302
Carroll	9,350
Cecil	6,208
Charles	10,713
Dorchester	2,779
Frederick	19,631
Garrett	2,013
Harford	16,374
Howard	19,079
Kent	1,336
Montgomery	70,442
Prince George's	84,257
Queen Anne's	2,966
Somerset	2,576
St. Mary's	5,958
Talbot	2,129
Washington	14,418
Wicomico	7,562
Worcester	3,610
Total	455,257

The most up-to-date information may be found on the Maryland Department of Health website at <https://coronavirus.maryland.gov>.

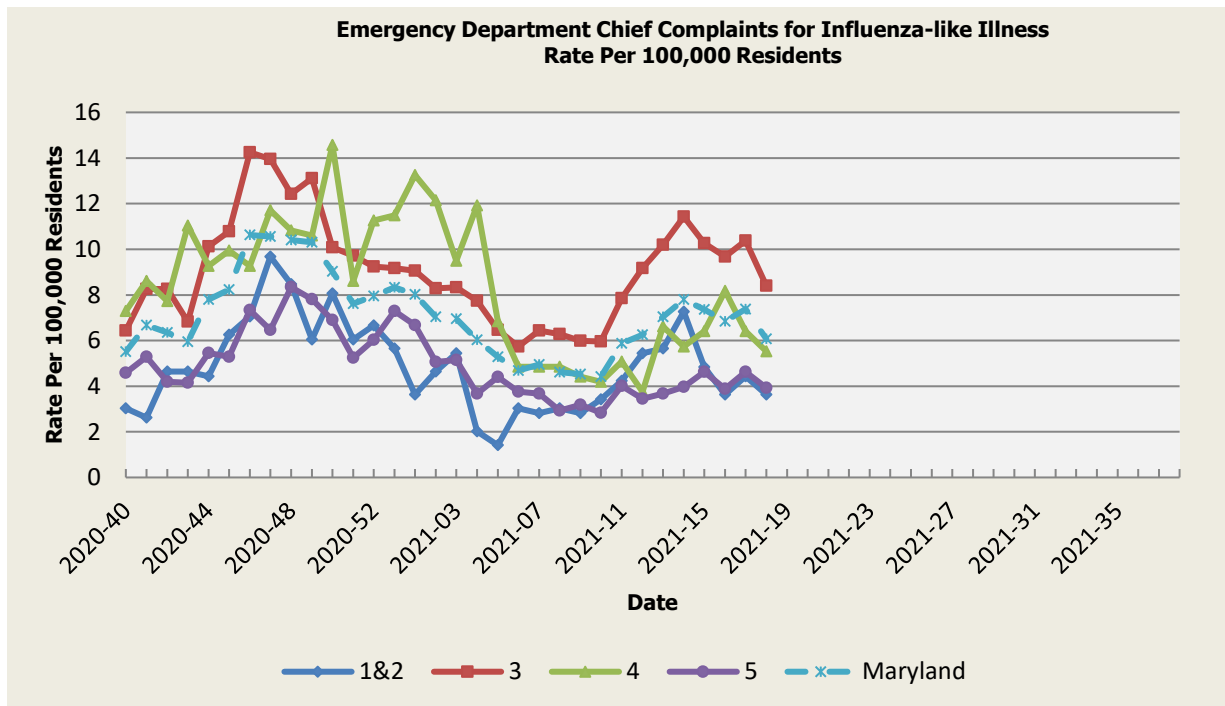
(report continues on next page)

SYNDROMIC INFLUENZA SURVEILLANCE

Seasonal Influenza reporting occurs from MMWR Week 40 through MMWR Week 20 (October 2020 through May 2021). Due to the COVID-19 pandemic, influenza reporting will be extended to the beginning of the 2021-2022 reporting season (MMWR Week 40/Week Ending October 9, 2021).

Seasonal Influenza activity for Week 18 was: Minimal

Influenza-like Illness

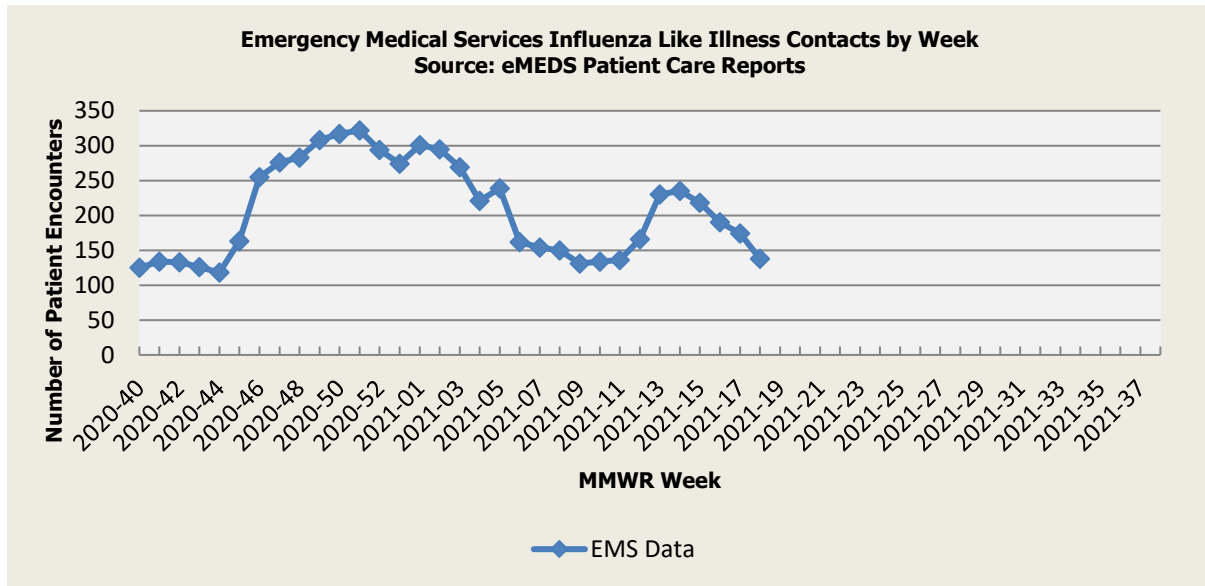


Influenza-like Illness Baseline Data Week 1 2010 - Present					
Health Region	1&2	3	4	5	Maryland
Mean Rate*	10.03	13.88	13.19	11.57	12.62
Median Rate*	7.26	10.19	9.27	8.43	9.15

* Per 100,000 Residents

(report continues on next page)

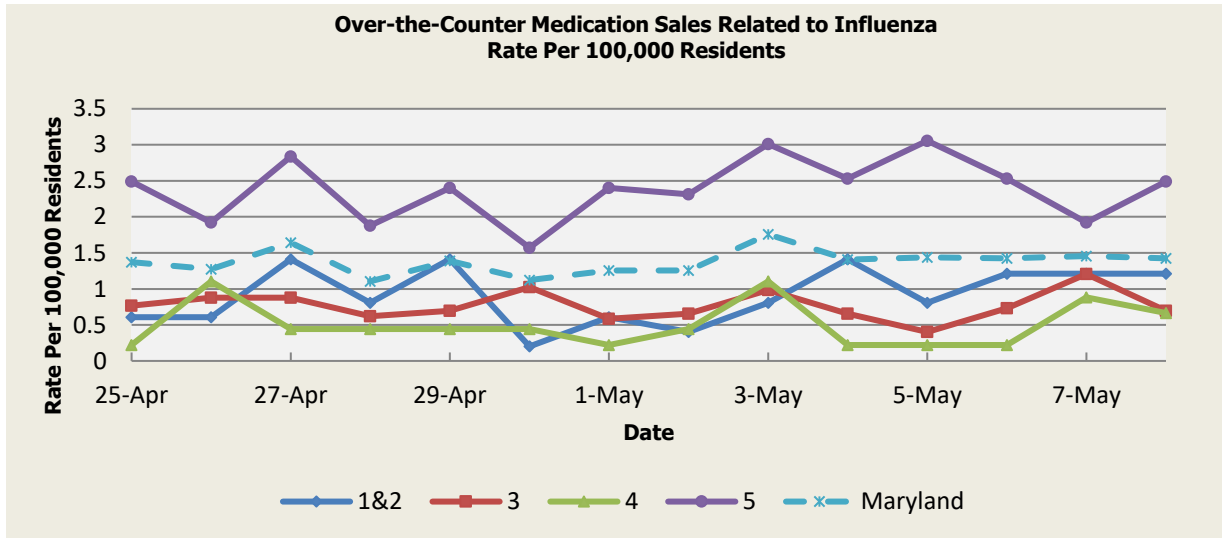
Influenza-like Illness Contacts by Week



Disclaimer on eMEDS flu related data: These data are based on EMS Pre-hospital care reports where the EMS provider has selected “flu like illness” as a primary or secondary impression of a patient’s illness. This impression is solely based on the signs and symptoms seen by the provider, not on any diagnostic tests. Since these numbers do not include all primary or secondary impressions that may be seen with influenza the actual numbers may be low. These data are reported for trending purposes only.

(report continues on next page)

Over-the-Counter Influenza-Related Medication Sales



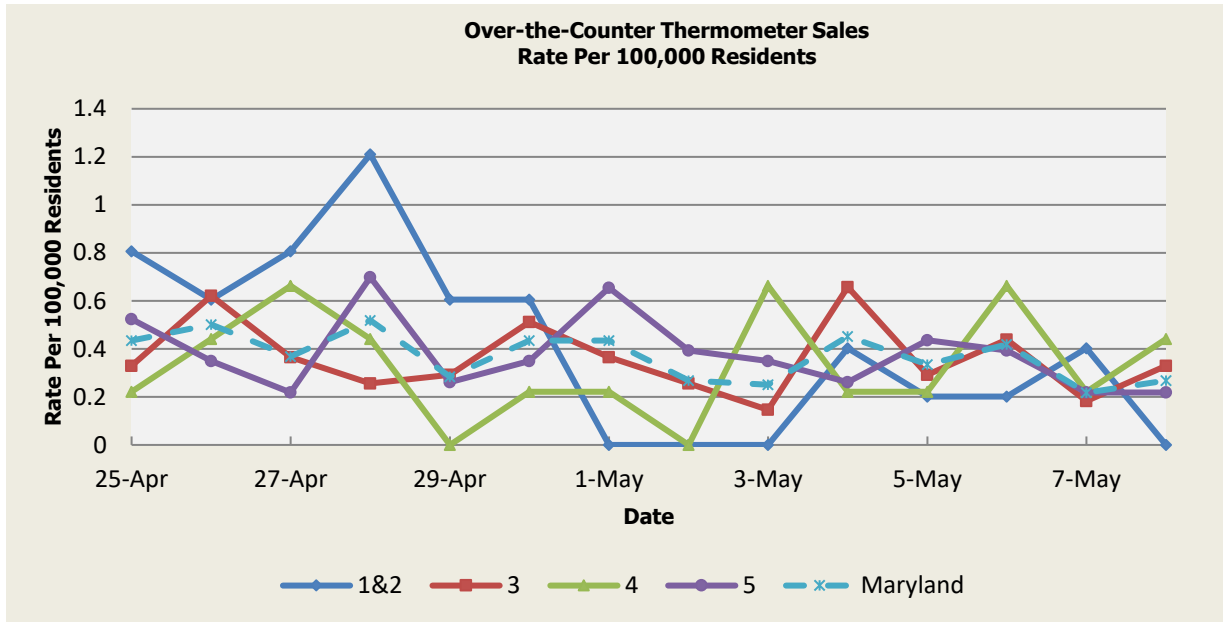
There was no appreciable increase above baseline in the rate of OTC Medication Sales during this reporting period.

OTC Medication Sales Baseline Data January 1, 2010 - Present					
Health Region	1&2	3	4	5	Maryland
Mean Rate*	3.17	4.03	2.47	7.32	5.10
Median Rate*	2.42	3.03	2.21	6.37	4.23

* Per 100,000 Residents

(report continues on next page)

Over-the-Counter Thermometer Sales



There was no appreciable increase above baseline in the rate of OTC Thermometer Sales during this reporting period.

Thermometer Sales Baseline Data January 1, 2010 - Present					
Health Region	1&2	3	4	5	Maryland
Mean Rate*	2.64	2.50	2.04	3.30	2.78
Median Rate*	2.42	2.45	1.99	3.32	2.83

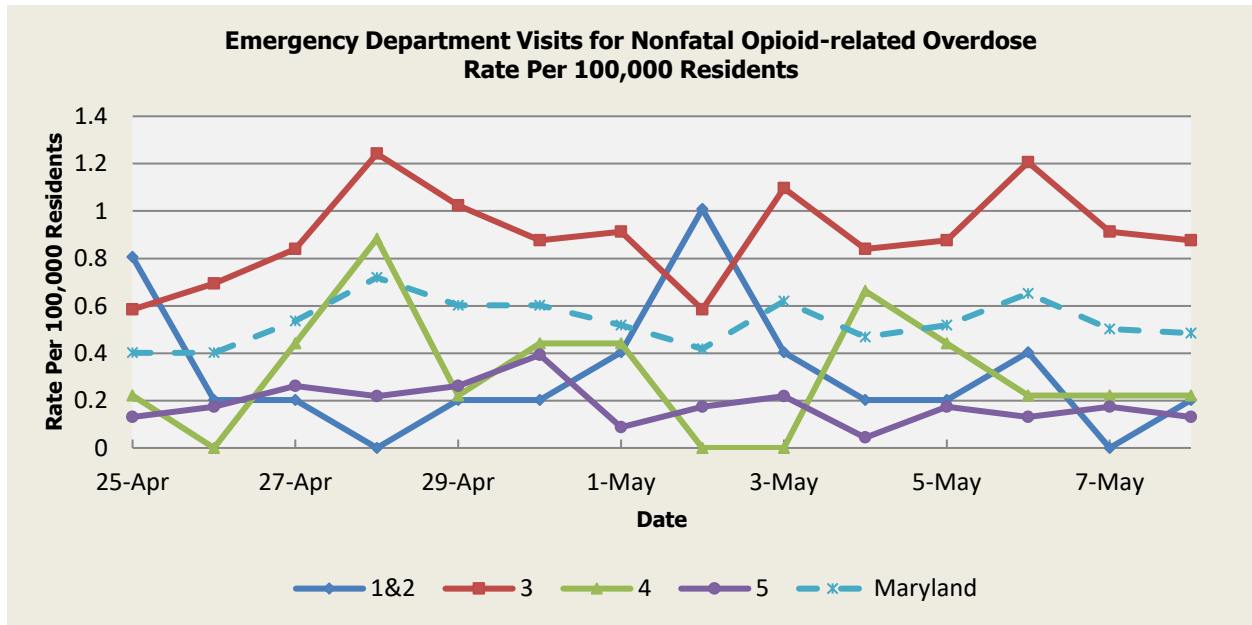
* Per 100,000 Residents

(report continues on next page)

SYNDROMIC OVERDOSE SURVEILLANCE

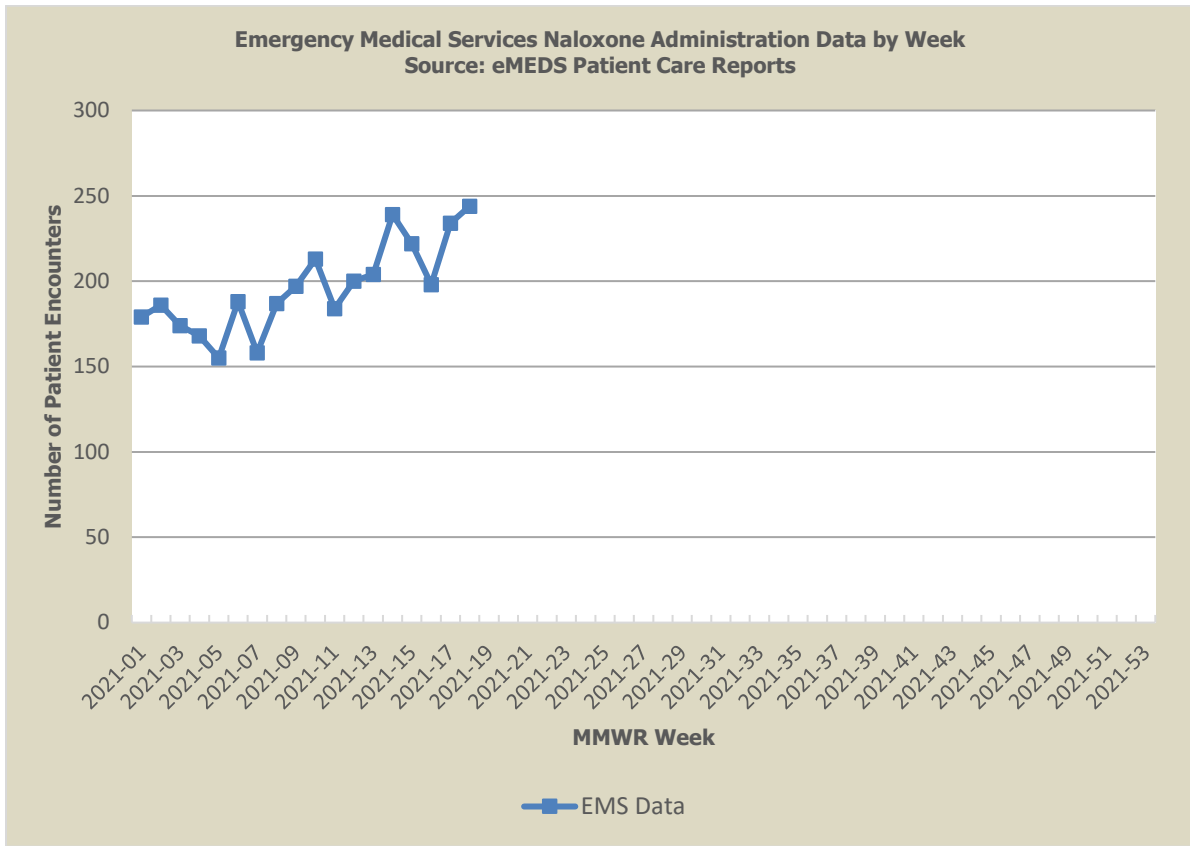
The purpose of this section is to characterize nonfatal overdose trends among Maryland residents captured by ESSENCE data, including emergency department (ED) chief complaint and discharge diagnosis as well as emergency medical services (EMS) patient care reports. Maryland uses ESSENCE data to track trends in nonfatal drug overdoses as a critical strategy for surveillance and tailoring prevention resources to populations most affected in the state.

Nonfatal Opioid-related Overdose



(report continues on next page)

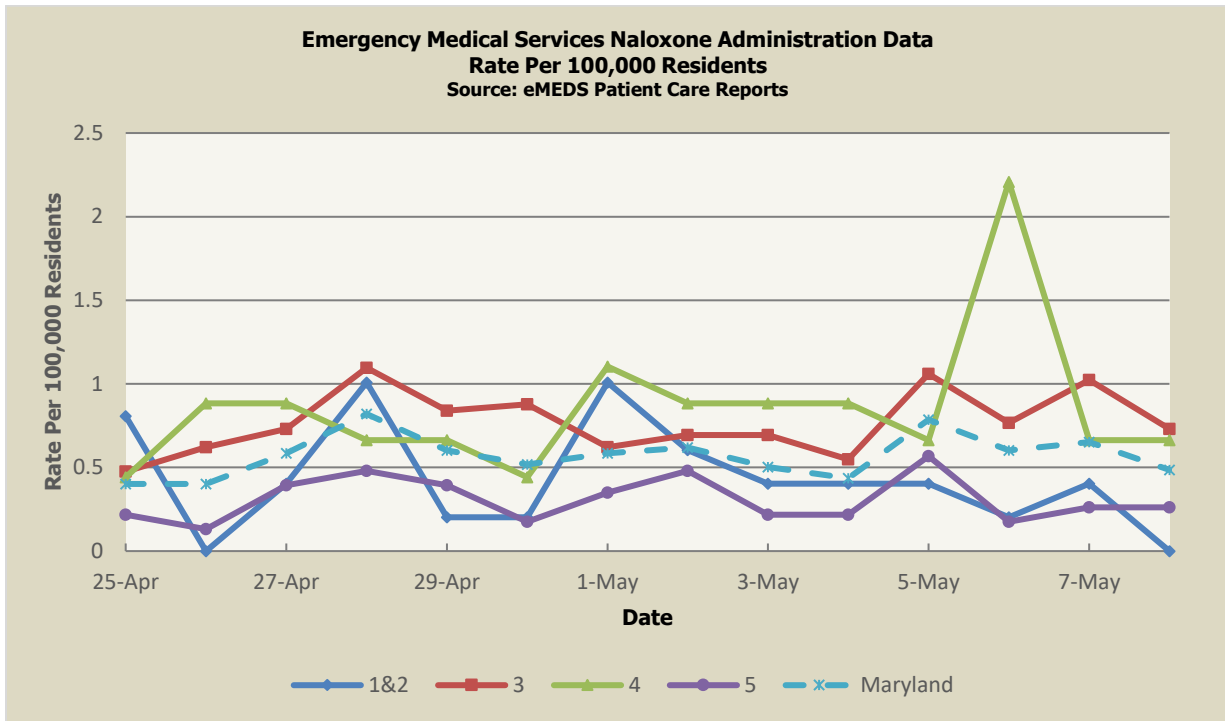
Naloxone Administration Data by Week



Disclaimer on eMEDS naloxone administration related data: These data are based on EMS Pre-hospital care reports where the EMS provider has documented that they administered naloxone. The administration of naloxone is based on the patient’s signs and symptoms and not on any diagnostic tests. These data are reported for trending purposes only.

(report continues on next page)

Naloxone Administration Data



Disclaimer on eMEDS Naloxone administration related data: These data are based on EMS Pre-hospital care reports where the EMS provider has documented that they administered naloxone. The administration of naloxone is based on the patient's signs and symptoms and not on any diagnostic tests. These data are reported for trending purposes only.

(report continues on next page)

PANDEMIC INFLUENZA UPDATE / AVIAN INFLUENZA-RELATED REPORTS

WHO update: The current WHO phase of pandemic alert for avian influenza is ALERT. Currently, the avian influenza H5N1 virus continues to circulate in poultry in some countries, especially in Asia and northeast Africa. This virus continues to cause sporadic human infections with some instances of limited human-to-human transmission among very close contacts. There has been no sustained human-to-human or community-level transmission identified thus far.

Influenza A (H7N9) is one of a subgroup of influenza viruses that normally circulate among birds. Until recently, this virus had not been seen in people. However, human infections have now been detected. Presently, there is limited information about the scope of the disease the virus causes and about the source of exposure. The disease is of concern because most patients have been severely ill. There is no indication thus far that it can be transmitted between people, but both animal-to-human and human-to-human routes of transmission are being actively investigated.

Alert phase: This is the phase when influenza caused by a new subtype has been identified in humans. Increased vigilance and careful risk assessment, at local, national, and global levels are characteristic of this phase. If the risk assessments indicate that the new virus is not developing into a pandemic strain, a de-escalation of activities towards those in the interpandemic phase may occur. As of May 14th, 2021, the WHO-confirmed global total (2003-2020) of human cases of H5N1 avian influenza virus infection stands at 862, of which 455 have been fatal. Thus, the case fatality rate for human H5N1 is approximately 53%.

AVIAN INFLUENZA

AVIAN INFLUENZA (ROMANIA, BULGARIA), 10 May 2021, Summary of outbreaks
Total outbreaks (1), Outbreak location 1: Ungheni, Mures, Started: 5 May 2021
Epidemiological unit: Farm. Read More: <https://promedmail.org/promed-post/?id=8354115>

AVIAN INFLUENZA (GERMANY), 8 May 2021, Outbreak location 1: Borger, Sogel, Emsland, Niedersachsen [Lower Saxony], Started: 3 May 2021, Epidemiological unit: farm.
Read More: <https://promedmail.org/promed-post/?id=8342449>

AVIAN INFLUENZA (CHINA), 8 May 2021, This morning [4 May 2021] Hong Kong's CHP reported mainland China's 12th H9N2 infection of 2021, involving a 30 year old woman from Guangdong province with onset on 20 Apr 2021. Read More: <https://promedmail.org/promed-post/?id=8345139>

HUMAN AVIAN INFLUENZA

There were no relevant human avian influenza reports this week

report continues on next page)

NATIONAL DISEASE REPORTS

SYPHILIS (CALIFORNIA), 13 May 2021, The state [California], in response to increasing rates of syphilis, is urging expanded screening for the sexually transmitted infection, especially among those who are pregnant and those who have high-risk factors such as multiple partners. Read More: <https://promedmail.org/promed-post/?id=8359942>

LYME DISEASE, ANAPLASMOSIS, BABESIOSIS (OREGON), 12 May 2021, Doctors in Oregon have described what might be one of the unluckiest encounters between man and tick ever documented. Read More: <https://promedmail.org/promed-post/?id=8357248>

E. COLI EHEC (WASHINGTON), 11 May 2021, Organic produce has tentatively been determined to be behind an *E. coli* O157 outbreak that has sickened children in the Seattle-King County area in Washington. Read More: <https://promedmail.org/promed-post/?id=8355857>

INTERNATIONAL DISEASE REPORTS

CORONAVIRUS DISEASE 2019 UPDATE (GLOBAL), 13 May 2021, Eight of 10 hospitalized COVID-19 patients developed neurologic complications and were 6 times more likely than their peers to die, according to early results from a global study published yesterday in JAMA Network Open. Read More: <https://promedmail.org/promed-post/?id=8360208>

FUSARIUM WILT, LETTUCE (NORWAY), 13 May 2021, Lettuce is produced in Norway both in field and greenhouses. Greenhouse lettuce is one of the most important vegetables grown year-round. Read More: <https://promedmail.org/promed-post/?id=8360921>

NECROTIZING FASCIITIS (AUSTRALIA), 12 May 2021, An alert has been issued after 3 suburbs in Melbourne recorded cases of flesh-eating skin disease. A Melbourne toddler came close to losing her leg after contracting a flesh-eating infection caused by Strep A [*Streptococcus pyogenes* or Group A streptococcus (GAS)]. Read More: <https://promedmail.org/promed-post/?id=8357167>

CHOLERA, DIARRHEA AND DYSENTERY UPDATE (NIGERIA), 11 May 2021, No fewer than 15 persons have died, and scores have been hospitalized as a result of a suspected cholera outbreak in Koya village in Minjibiri Local Government Area of Kano State. Read More: <https://promedmail.org/promed-post/?id=8356695>

RABIES (EURASIA), 10 May 2021, Around 99% of human cases of rabies are due to dog bites and unlike many other diseases, we already have all the tools needed to eradicate it. Read More: <https://promedmail.org/promed-post/?id=8354285>

TRICHINELLOSIS (ARGENTINA), 10 May 2021, Health officials in Argentina report that a trichinellosis outbreak reported on April 27 has now affected 119 people in a number of cities and towns in Córdoba province. Read More: <https://promedmail.org/promed-post/?id=8353825>

SALMONELLOSIS, SEROTYPE BRAENDERUP (SWEDEN), 8 May 2021, Swedish authorities are investigating an outbreak of salmonella infection that has affected more than a dozen people in less than 2 weeks. Read More: <https://promedmail.org/promed-post/?id=8351788>

SALMONELLOSIS, SEROTYPE TYPHIMURIUM (DENMARK), 8 May 2021, An outbreak of salmonella infection in Denmark has now affected 40 people with 24 of them needing hospital treatment since November 2020. Read More: <https://promedmail.org/promed-post/?id=8351787>

OTHER RESOURCES AND ARTICLES OF INTEREST

More information concerning Public Health and Emergency Preparedness can be found at the Office of Preparedness and Response website: <http://preparedness.health.maryland.gov/> or follow us on Facebook at www.facebook.com/MarylandOPR.

More data and information on influenza can be found on the MDH website: <http://phpa.health.maryland.gov/influenza/fluwatch/Pages/Home.aspx>

Please participate in the Maryland Resident Influenza Tracking System (MRITS): <http://flusurvey.health.maryland.gov>

NOTE: This weekly review is a compilation of data from various surveillance systems, interpreted with a focus on a potential BT event. It is not meant to be inclusive of all epidemiology data available, nor is it meant to imply that every activity reported is a definitive BT event. International reports of outbreaks due to organisms on the CDC Critical Biological Agent list will also be reported. While not "secure", please handle this information in a professional manner. Please feel free to distribute within your organization, as you feel appropriate, to other professional staff involved in emergency preparedness and infection control.

For questions about the content of this review or if you have received this and do not wish to receive these weekly notices, please e-mail us. If you have information that is pertinent to this notification process, please send it to us to be included in the routine report.

Prepared By:

Office of Preparedness and Response, Maryland Department of Health
7462 Candlewood Rd, Hanover, MD 21076

Peter Fotang, MD, MPH
Epidemiologist, Biosurveillance Program
Office: 443-628-6555
Email: Peter.Fotang@maryland.gov

Jessica Acharya (Goodell), MPH
Career Epidemiology Field Officer, CDC
Office: 443-628-6583
Email: Jessica.Acharya@maryland.gov

Lindsey Hall, MPH
Epidemiologist, CDC Foundation
Office: 443-628-6550
Email: Lindsey.hall@maryland.gov

Appendix 1: ESSENCE Syndrome Definitions and Associated Category A Conditions

Syndrome	ESSENCE Definition	Category A Conditions
Botulism-like	(Botulism or (DifficultyFocusing and DifficultySpeaking) or (DifficultySpeaking and DifficultySwallowing) or (DifficultySwallowing and DifficultyFocusing) or DoubleVision or FacialParalysis or GuillainBarre or Ptosis) and not GeneralExclusions	Botulism
Fever	(Chills or (FeverPlus and (Drowsiness or Seizure)) or FeverOnly or SepsisGroup or ViralSyndrome) and not GeneralExclusions	N/A
Gastrointestinal	(AbdominalCramps or AbdominalPainGroup or Diarrhea or FoodPoisoning or Gastroenteritis or GIBleeding or Peritonitis or Vomiting) and not (GeneralExclusions or Gynecological or Obstetric or Reproductive or UrinaryTract)	Anthrax (gastrointestinal)
Hemorrhagic Illness	(FeverOrChills and (AcuteBloodAbnormalitiesGroup or BleedingFromMouth or BleedingGums or GIBleeding or Hematemesis or Hemoptysis or Nosebleed or Petechiae or Purpura)) and not GeneralExclusions	Viral Hemorrhagic Fever
Localized Lesion	(Boils or Bump or Carbuncle or DepressedUlcer or Eschar or Furuncle or InsectBite or SkinAbscess or (SkinSores and not AllOverBody) or SkinUlcer or SpiderBite) and not (GeneralExclusions or Decubitus or Diabetes or StasisUlcer)	Anthrax (cutaneous) Tularemia
Lymphadenitis	(BloodPoisoning or Bubo or CatScratchDisease or SwollenGlands) and not GeneralExclusions	Plague (bubonic)
Neurological	((([Age<75] and AlteredMentalStatus) or (FeverPlus and (Confusion or Drowsiness or Petechiae or StiffNeck)) or Delirium or Encephalitis or Meningitis or UnconsciousGroup) and not GeneralExclusions	N/A
Rash	(ChickenPox or Measles or RashGeneral or Roseola or (Rubella and not Pregnancy) or Shingles or (SkinSores and AllOverBody) or Smallpox) and not GeneralExclusions	Smallpox
Respiratory	(Anthrax or Bronchitis or (ChestPain and [Age<50]) or Cough or Croup or DifficultyBreathing or Hemothorax or Hypoxia or Influenza or Legionnaires or LowerRespiratoryInfection or Pleurisy or Pneumonia or RespiratoryDistress or RespiratoryFailure or RespiratorySyncytialVirus or RibPain or ShortnessOfBreath or Wheezing) and not (GeneralExclusions or Cardiac or (ChestPain and Musculoskeletal) or Hyperventilation or Pneumothorax)	Anthrax (inhalational) Tularemia Plague (pneumonic)
Severe Illness or Death	CardiacArrest or CodeGroup or DeathGroup or (Hypotension and FeverPlus) or RespiratoryArrest or SepsisGroup or Shock	N/A

Appendix 2: Maryland Health and Medical Region Definitions

Health and Medical Region	Counties Reporting to ESSENCE
Regions 1 & 2	Allegany County Frederick County Garrett County Washington County
Region 3	Anne Arundel County Baltimore City Baltimore County Carroll County Harford County Howard County
Region 4	Caroline County Cecil County Dorchester County Kent County Queen Anne's County Somerset County Talbot County Wicomico County Worcester County
Region 5	Calvert County Charles County Montgomery County Prince George's County St. Mary's County

