



MARYLAND Department of Health

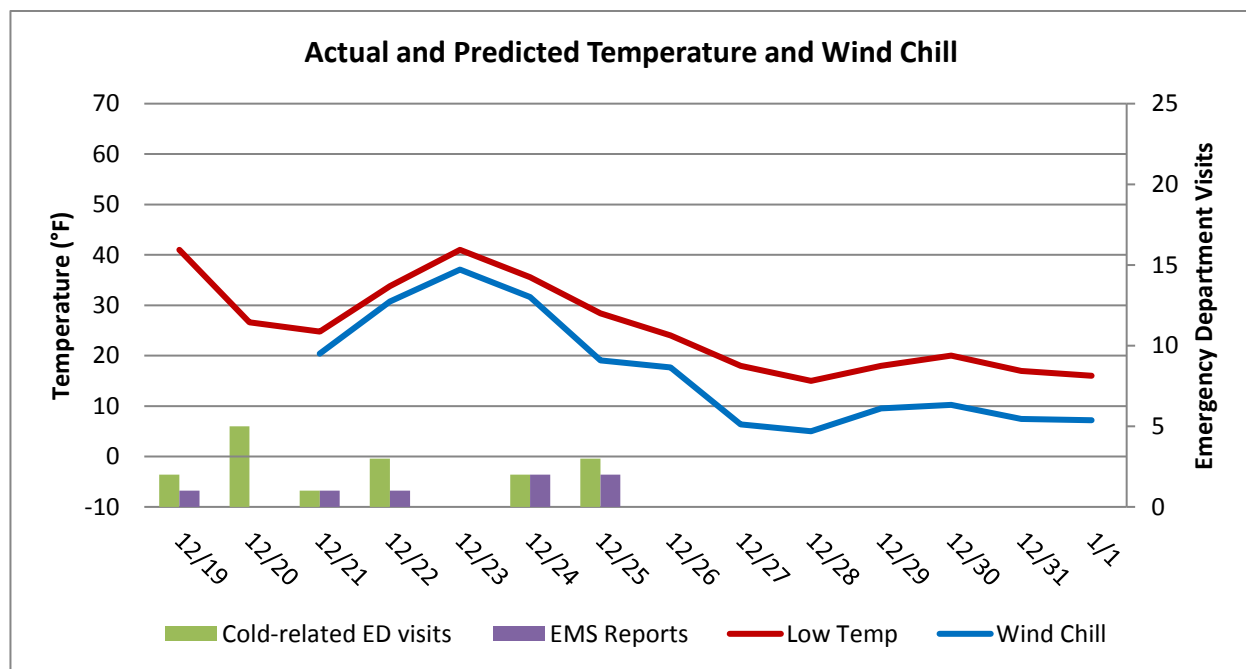
Larry Hogan, Governor · Boyd Rutherford, Lt. Governor · Dennis Schrader, Secretary

Weekly Cold-related Illness Surveillance Report

December 27, 2017

Reporting for December 19, 2017 to December 25, 2017

National Weather Service Forecast: No current advisories.
Wind Chill Advisories Declared During the Previous Week: 0
Total Wind Chill Advisories Declared This Winter: 3

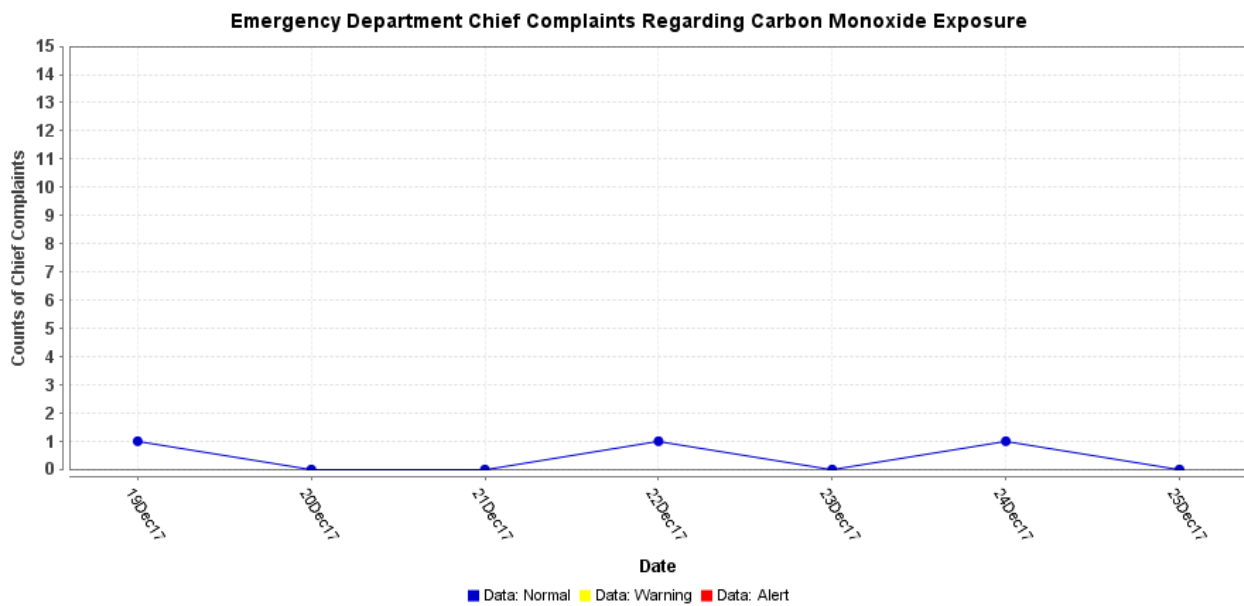
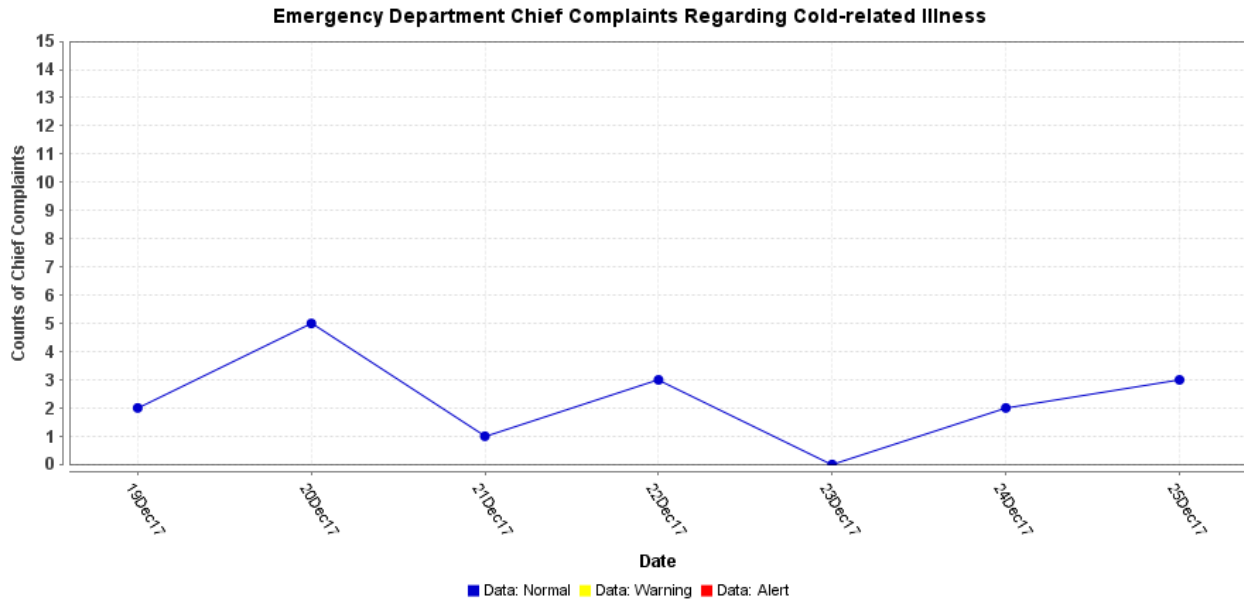


Wind Chill is only calculated for temperatures below 50°F and wind speeds above 3 mph

Note on Emergency Department Data: The results from the query used in ESSENCE, an electronic biosurveillance system, to track cold-related illnesses may be an overestimation of the actual burden of illness related to the cold weather. This overestimation is due to the nature of the query, which includes the term hypothermia and frostbite.

Note on EMS Data: These data are based on EMS pre-hospital care reports where the EMS provider has selected hypothermia as a primary or secondary impression a patient's illness. This impression is solely based on the signs and symptoms seen by the provider, not on any diagnostic tests. Since these numbers do

not include all primary or secondary impressions that may be seen with cold exposure, the actual numbers may be low. These data are reported for trending purposes only.

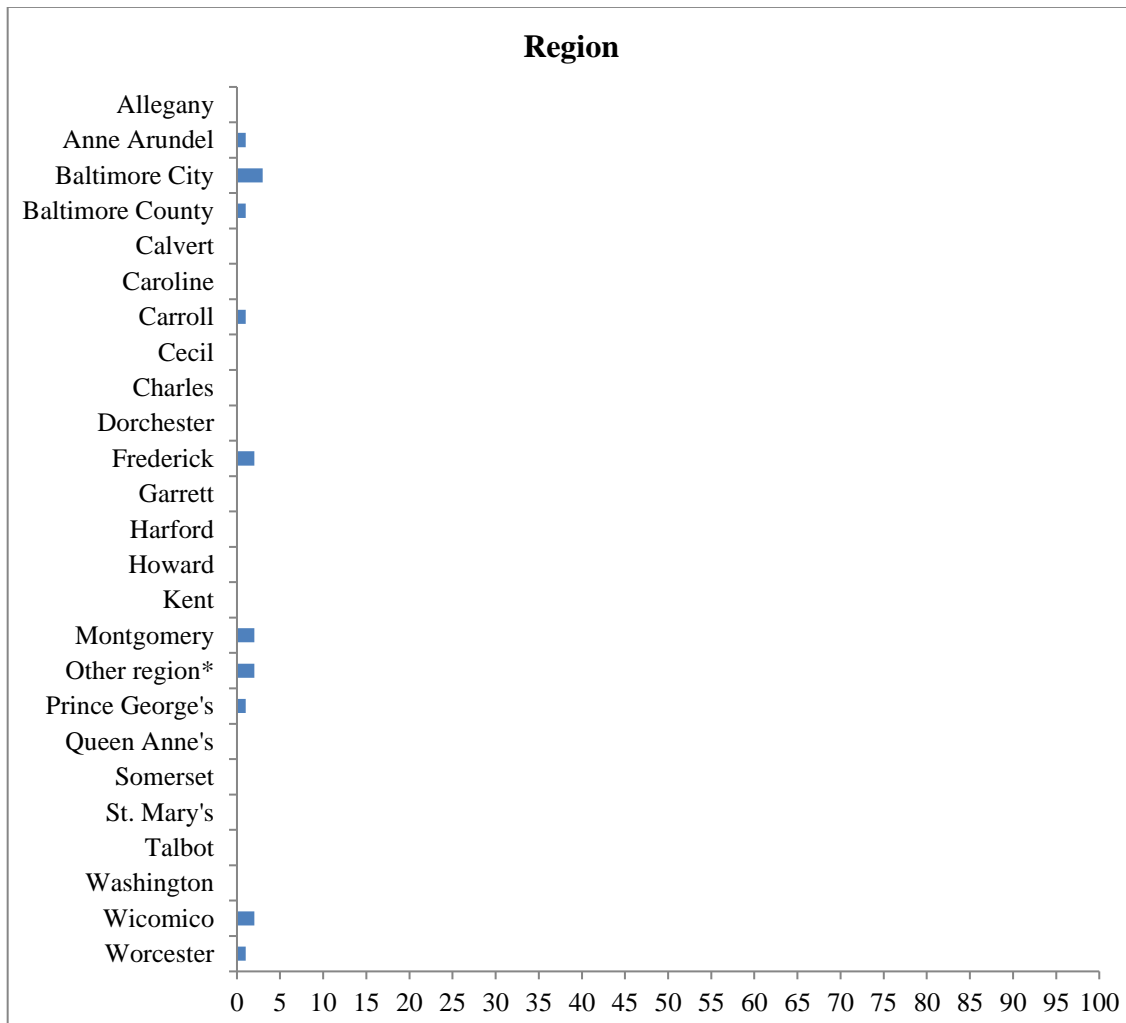


Date	Number of Chief Complaints Regarding Cold-related Illness	Number of Chief Complaints Regarding Carbon Monoxide Exposure
December 19	2	1
December 20	5	0
December 21	1	0
December 22	3	1
December 23	0	0
December 24	2	1
December 25	3	0

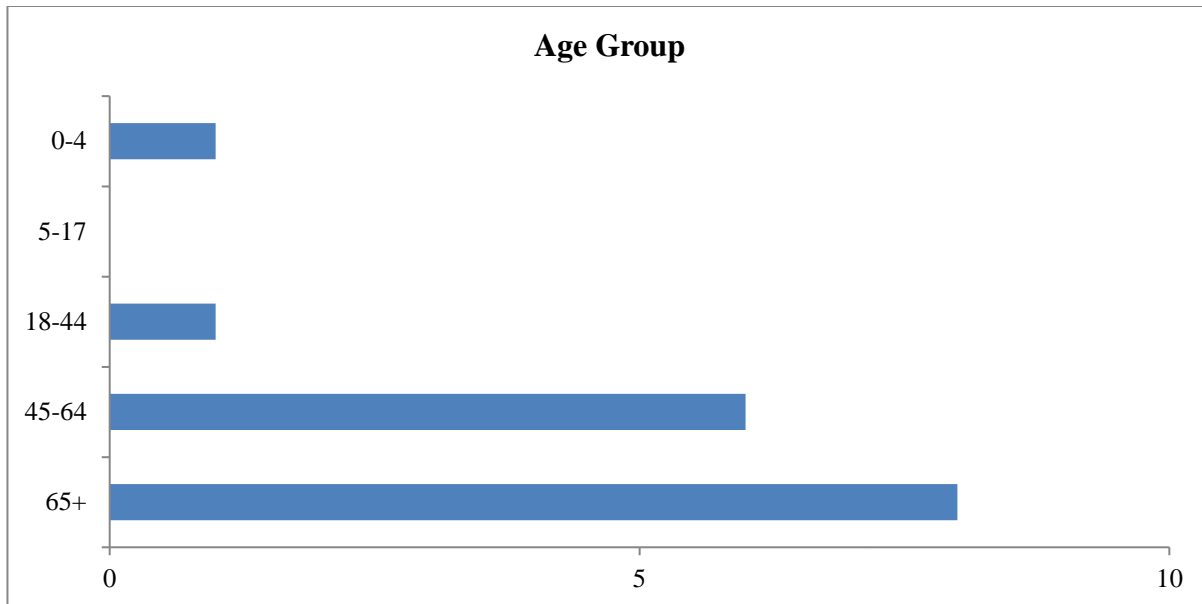
***Note: ESSENCE chief complaint query for cold-related illness contains the following terms: frostbite, frostnip, hypothermia, chilblain, and trench foot**

There was one chief complaint cluster identified this week regarding carbon monoxide exposure. The respective jurisdiction has followed up on this cluster.

Geographical and Age Group Distribution of Emergency Department Chief Complaints Regarding Cold-related Illnesses for December 19 through December 25, 2017



***Geographical distribution of emergency department chief complaints is based on patients' jurisdictions of residence. The "Other Region" category includes patient records without a ZIP code and patients who reside outside of Maryland.**



Total Number of Cold-related Deaths	Jurisdiction*	Age Group	Gender
3	Baltimore City	Unknown	Female
	Montgomery**	45-64 Years Old	Male
	Garrett	65+ Years Old	Female

*Refers to the jurisdiction where the death occurred. **Refers to a newly listed death

There was one cold-related death reported this week.

There have been three cold-related deaths during the reporting period this winter. One death was a suspected or presumed homeless individual.

For media inquiries, please contact the Office of Communications: [410-767-6490](tel:410-767-6490)

Wind Chill Advisory/Warning Criteria: The National Weather Service issues a Wind Chill Advisory for projected wind chill factors of -5°F to -25°F, and a Wind Chill Warning when the projected wind chill is for -25° or less.

Suspected Homeless Death Data: Office of the Chief Medical Examiner (OCME) Field Investigators use the U.S. Department of Health and Human Services (HHS) [homeless definition](#) to determine suspected homeless deaths. Homeless deaths are listed as suspected due to the limited information available to the Field Investigators at the time of investigation, which may result in some misclassifications.

For more information about extreme cold and emergency preparedness, follow the Office of Preparedness and Response on [Twitter](#) and [Facebook](#).

Prepared by:

Toll Free 1-877-4MD-DHMH – TTY/Maryland Relay Service 1-800-735-2258
Web Site: www.health.maryland.gov

Office of Preparedness and Response
Maryland Department of Health
300 W. Preston Street, Suite 202
Baltimore, MD 21201

<http://preparedness.health.maryland.gov>

Kristin A. McMenamin, MS
Special Projects Coordinator
Office: 410-767-6201

Email: Kristin.McMenamin@maryland.gov

Jessica Goodell
Epidemiology Field Assignee
Office: 410-767- 6745

Email: Jessica.Goodell@maryland.gov

Joseph Anelli, MS
Emergency Operations Manager
Office: 410-767-6434

Email: Joseph.Anelli@maryland.gov

Adejare Atanda, DDS, MPH, CPH
Biosurveillance Epidemiologist

Office: 410-767-5668

Email: Adejare.Atanda@maryland.gov

Sara Barra, MS
Chief Planner
Office: 410-767- 8438

Email: Sara.Barra@maryland.gov

Carin Morrell
Public Information Officer
Office: 410-767-0590

Email: Carin.Morrell@maryland.gov