



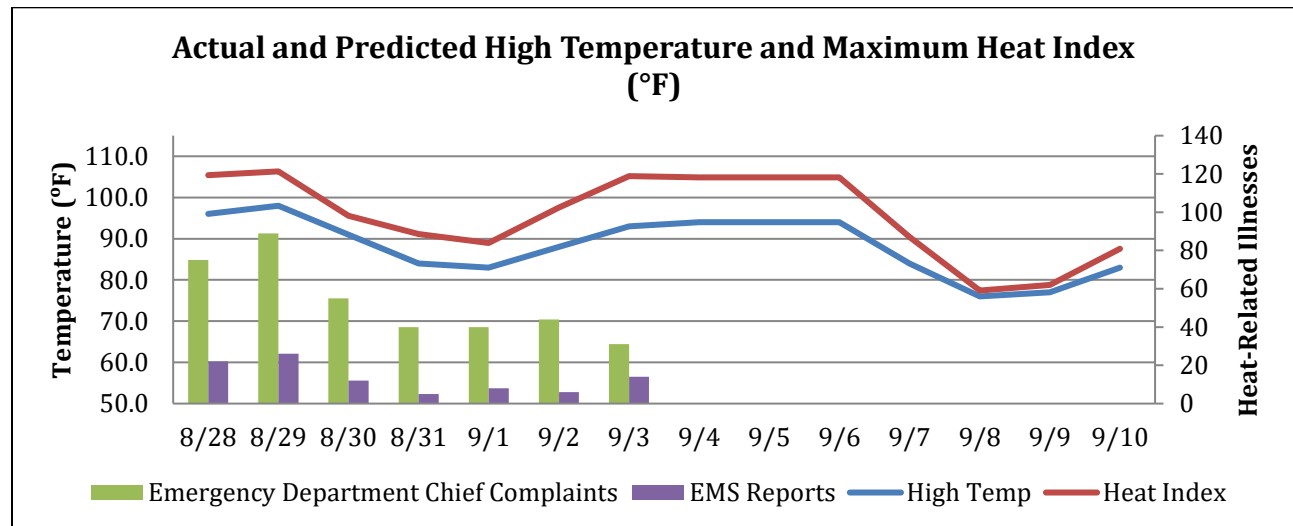
MARYLAND  
Department of Health

# Weekly Heat-related Illness Surveillance Report

September 5, 2018

Reporting for August 28, 2018 to September 3, 2018

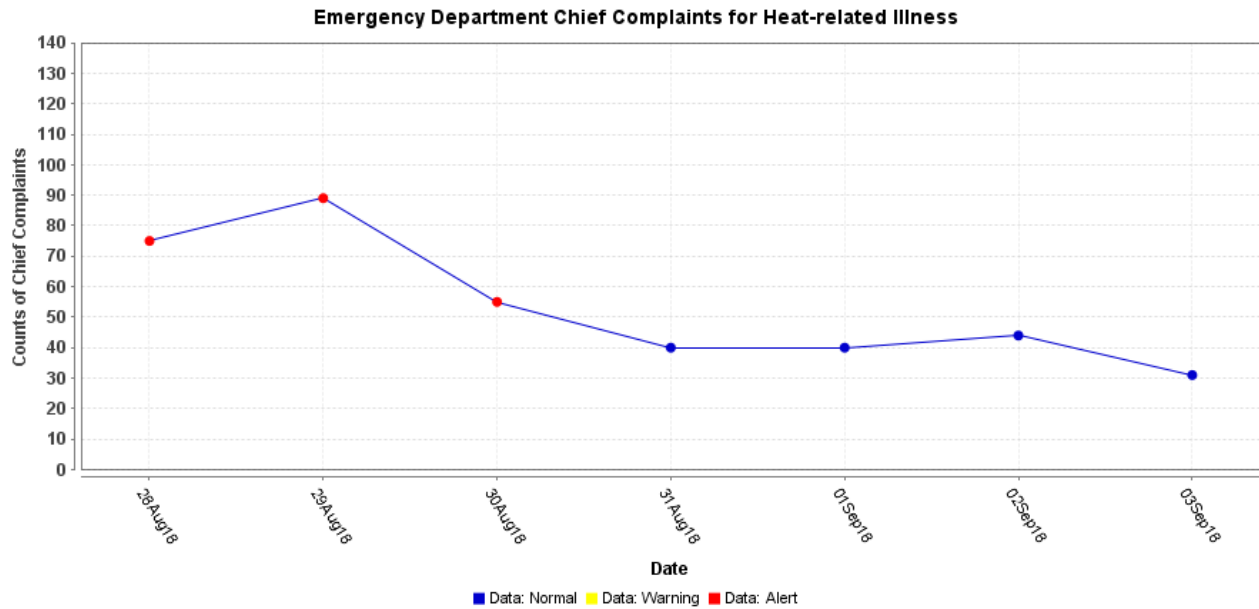
National Weather Service Forecast: No current advisories.  
Heat Advisories Declared During the Previous Week: 2  
Total Heat Advisories Declared This Year: 8



Heat Indexes are only calculated for temperatures above 80°F with humidity of 43% or greater

*Note on Emergency Department Data:* The results from the query used in ESSENCE, an electronic biosurveillance system, to track heat-related illnesses may be an overestimation of the actual burden of illness related to the hot weather. This overestimation is due to the nature of the query, which includes the term dehydration, a condition that may be caused by factors other than heat.

*Note on EMS Data:* These data are based on EMS pre-hospital care reports where the EMS provider has selected “Heat Exhaustion/Heat Stroke” and/or “Hyperthermia” as a primary or secondary impression a patient’s illness. This impression is solely based on the signs and symptoms seen by the provider, not on any diagnostic tests. Since these numbers do not include all primary or secondary impressions that may be seen with heat exposure the actual numbers may be low. These data are reported for trending purposes only.



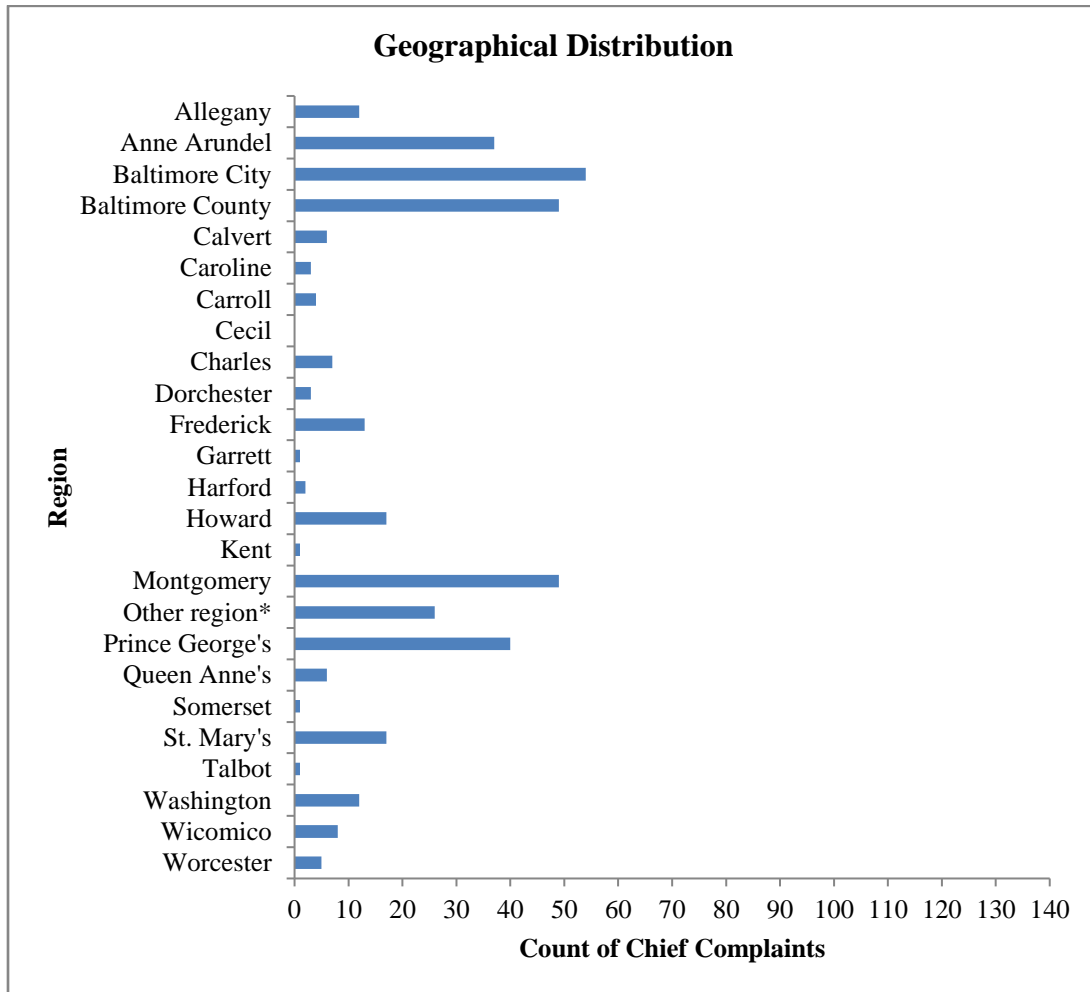
Date	Number of Chief Complaints Regarding Heat-related Illnesses State of Maryland
August 28	75
August 29	89
August 30	55
August 31	40
September 1	40
September 2	44
September 3	31

*\*Note: ESSENCE chief complaint query for heat-related illness contains the following terms: hyperthermia, heat, dehydration and sunburn*

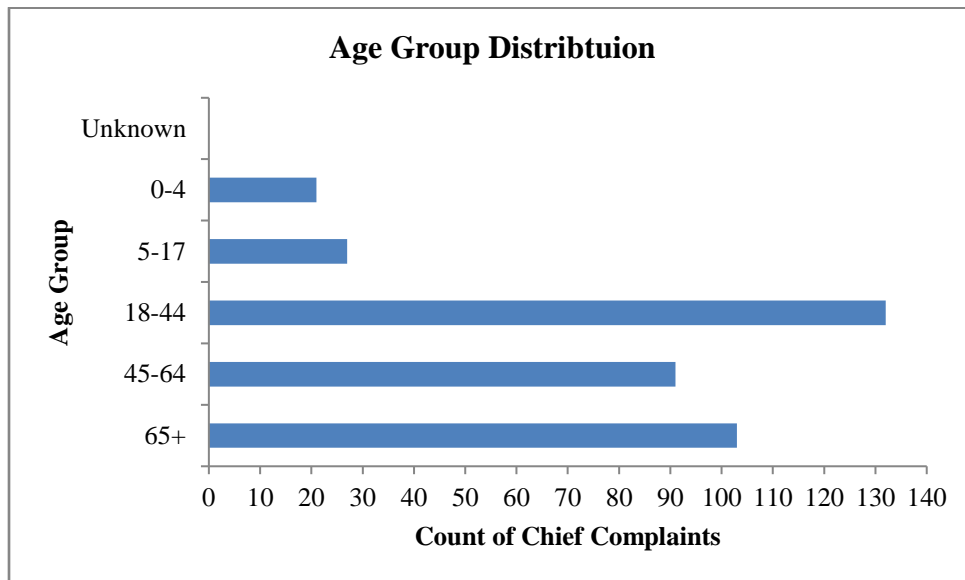
There were no chief complaint clusters identified during the week.

# Geographical Distribution of Emergency Department Chief Complaints Regarding Heat-related Illnesses for August 29, 2018 through September 3, 2018

*\*Geographical distribution of emergency department chief complaints is based on patients' jurisdictions of residence. The "Other Region" category includes patient records without a ZIP code and patients who reside outside of Maryland.*



**Age Group Distribution of Emergency Department Chief Complaints Regarding Heat-related Illnesses for August 28, 2018 through September 3, 2018**



*Report continued on next page...*

<b>Total Number of Heat-related Deaths</b>	<b>Jurisdiction*</b>	<b>Age Group</b>	<b>Gender</b>
25	Prince George's	18-44 Years Old	Male
	Anne Arundel	18-44 Years Old	Male
	Anne Arundel	18-44 Years Old	Male
	Anne Arundel	18-44 Years Old	Male
	Prince George's	18-44 Years Old	Male
	Baltimore County	45-64 Years Old	Female
	Harford	45-64 Years Old	Male
	Baltimore City	45-64 Years Old	Male
	Anne Arundel	45-64 Years Old	Male
	Baltimore City	45-64 Years Old	Female
	Baltimore City	45-64 Years Old	Male
	Unknown	45-64 Years Old	Male
	Prince George's	65+ years Old	Female
	Prince George's	65+ Years Old	Male
	Baltimore City	65+ Years Old	Male
	Baltimore City	65+ Years Old	Male
	Baltimore City	65+ Years Old	Male
	Baltimore City	65+ Years Old	Female
	Baltimore City	65+ Years Old	Male
	Baltimore City	65+ Years Old	Male
	Baltimore City	65+ Years Old	Female
	Baltimore City	65+ Years Old	Male
	Baltimore City	65+ Years Old	Male
	Prince George's	65+ Years Old	Male
	Prince George's	65+ Years Old	Female

*\*Refers to the jurisdiction where the death occurred. \*\*Refers to a newly listed death ^Refers to updated information from OCME*

**There have been no heat-related deaths reported this week.**

There have been 25 heat-related deaths during the reporting period this summer. Two deaths have been suspected or presumed homeless individuals.

**Heat Advisory Criteria:** The National Weather Service will issue a Heat Advisory when the heat index value is expected to reach 105 to 109 degrees Fahrenheit within the next 12 to 24 hours. A Heat Advisory may be issued for lower criteria if it is early in the season or during a multiday heat wave. NWS will issue an Excessive Heat Warning when the heat index value is expected to reach or exceed 110 degrees Fahrenheit within the next 12 to 24 hours. An Excessive Heat Warning may be issued for lower criteria if it is early in the season or during a multiday heat wave.

**Suspected Homeless Death Data:** Office of the Chief Medical Examiner (OCME) Field Investigators use the U.S. Department of Health and Human Services (HHS) homeless definition to determine suspected homeless deaths. Homeless deaths are listed as suspected due to the limited information available to the Field Investigators at the time of investigation, which may result in some misclassifications.

For more information about extreme cold and emergency preparedness, follow the Office of Preparedness and Response on Twitter and Facebook.

For media inquiries, please contact the Office of Communications: 410-767-6490

**Prepared by:**

Office of Preparedness and Response  
Maryland Department of Health  
300 W. Preston Street, Suite 202  
Baltimore, MD 21201

<http://preparedness.health.maryland.gov>

Kristin A. McMenamin, MS  
Special Projects Coordinator  
Office: 410-767-6201  
Email: [Kristin.McMenamin@maryland.gov](mailto:Kristin.McMenamin@maryland.gov)

Adejare Atanda, BDS, MPH, CPH  
Epidemiologist, Biosurveillance Program  
Office: 410-767-5668  
Email: [Adejare.Atanda@maryland.gov](mailto:Adejare.Atanda@maryland.gov)

Jessica Goodell, MPH  
Career Epidemiology Field Officer  
Office: 410-767- 6745  
Email: [Jessica.Goodell@maryland.gov](mailto:Jessica.Goodell@maryland.gov)

Sara Barra, MS  
Chief Planner  
Office: 410-767- 8438  
Email: [Sara.Barra@maryland.gov](mailto:Sara.Barra@maryland.gov)

Carin Morrell, MA  
Public Information Officer  
Office: 410-767-0590  
Email: [Carin.Morrell@maryland.gov](mailto:Carin.Morrell@maryland.gov)