

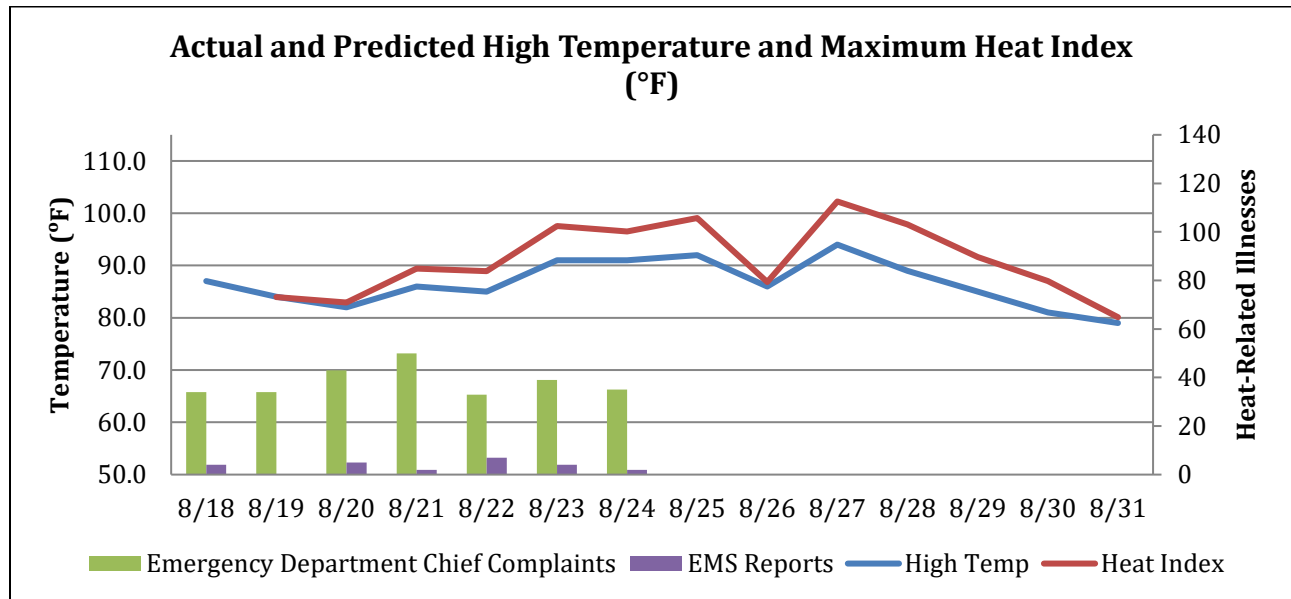


Weekly Heat-related Illness Surveillance Report

August 26, 2020

Reporting for August 18, 2020 to August 24, 2020

National Weather Service Forecast: No current advisories
Heat Advisories Declared During the Previous Week: 0
Total Heat Advisories Declared This Year: 8

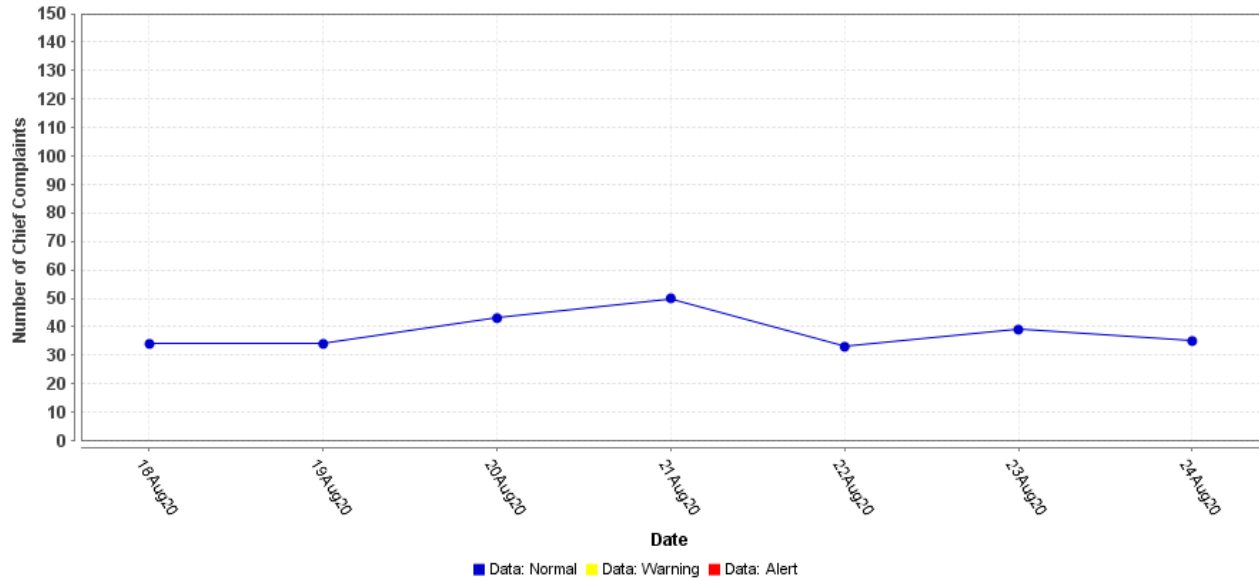


Heat Indexes are only calculated for temperatures above 80°F with humidity of 43% or greater

Note on Emergency Department Data: The results from the query used in ESSENCE, an electronic biosurveillance system, to track heat-related illnesses may be an overestimation of the actual burden of illness related to the hot weather. This overestimation is due to the nature of the query, which includes the term dehydration, a condition that may be caused by factors other than heat. As of November 2019, visit data from 23 urgent care centers are now included in ESSENCE emergency department visit data.

Note on EMS Data: These data are based on EMS pre-hospital care reports where the EMS provider has selected “Heat Exhaustion/Heat Stroke” and/or “Hyperthermia” as a primary or secondary impression of a patient’s illness. This impression is solely based on the signs and symptoms seen by the provider, not on any diagnostic tests. Since these numbers do not include all primary or secondary impressions that may be seen with heat exposure the actual numbers may be low. These data are reported for trending purposes only.

Emergency Department Chief Complaints Regarding Heat-related Illness

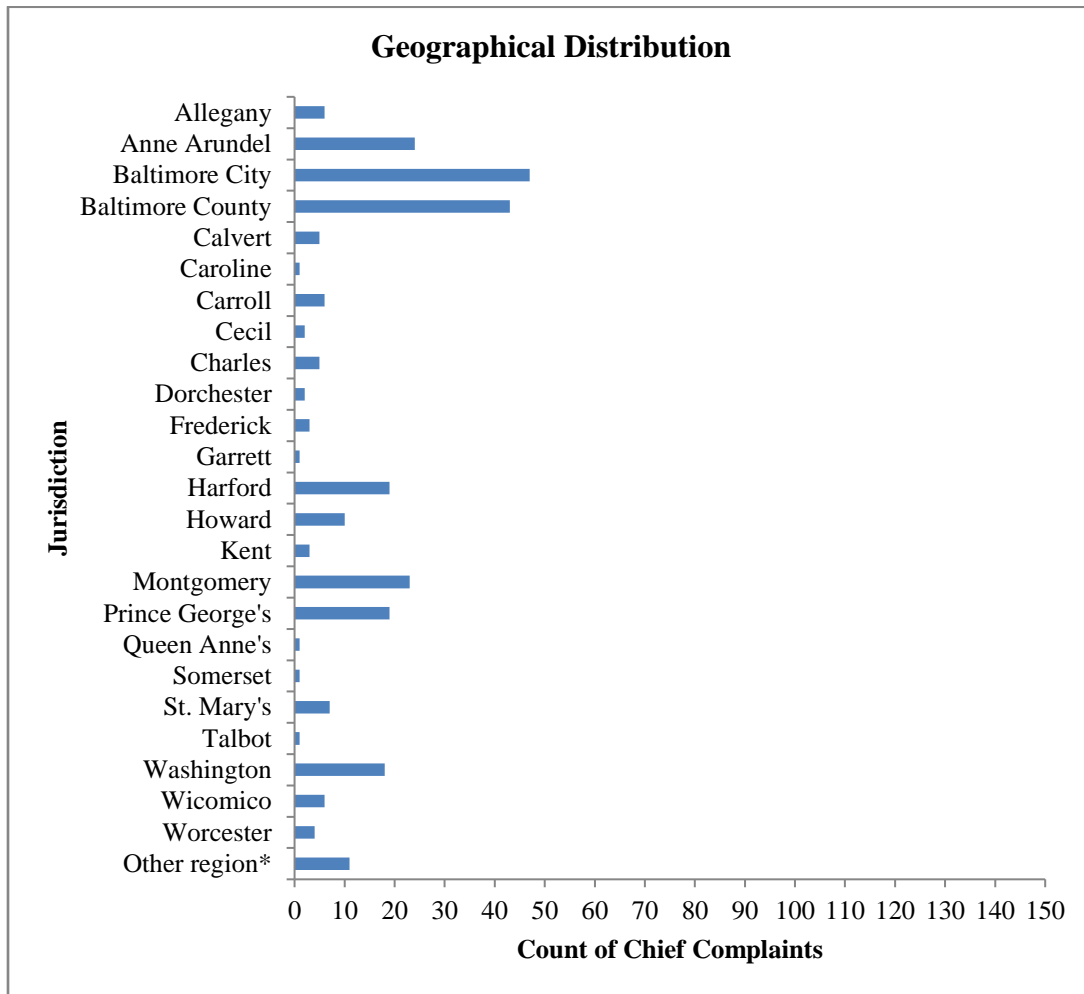


Date	Number of Chief Complaints Regarding Heat-related Illnesses State of Maryland
August 18	34
August 19	34
August 20	43
August 21	50
August 22	33
August 23	39
August 24	35

**Note: ESSENCE chief complaint query for heat-related illness contains the following terms: hyperthermia, heat, dehydration and sunburn*

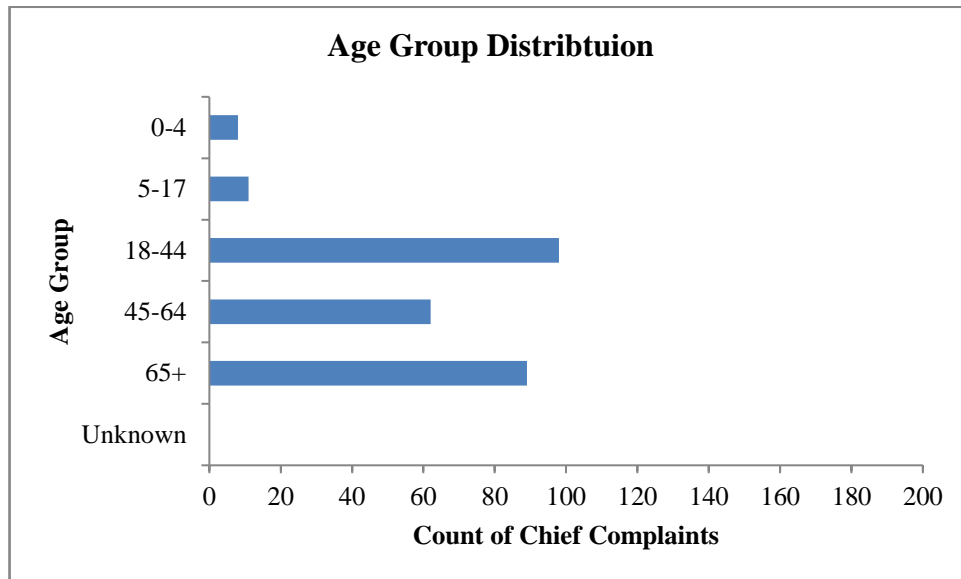
There were no chief complaint clusters identified during the week.

Geographical Distribution of Emergency Department Chief Complaints Regarding Heat-related Illnesses for August 18, 2020 to August 24, 2020



**Geographical distribution of emergency department chief complaints is based on patients' jurisdictions of residence. The "Other Region" category includes patient records without a ZIP code and patients who reside outside of Maryland.*

Age Group Distribution of Emergency Department Chief Complaints Regarding Heat-related Illnesses for August 18, 2020 to August 24, 2020



Report continued on next page...

Total Number of Heat-related Deaths	Jurisdiction*	Age Group	Gender
14	Wicomico	0-17 Years Old	Male
	Baltimore City	18-44 Years Old	Male
	Montgomery	18-44 Years Old	Male
	Harford	45-64 Years Old	Male
	Dorchester	45-64 Years Old	Male
	Anne Arundel	45-64 Years Old	Female
	Cecil**	45-64 Years Old	Male
	Montgomery	65+ Years Old	Male
	Baltimore County	65+ Years Old	Female
	Somerset	65+ Years Old	Male
	Worcester	65+ Years Old	Female
	Baltimore City	65+ Years Old	Male
	Anne Arundel	65+ Years Old	Female
	Baltimore City**	65+ Years Old	Female

**Refers to the jurisdiction where the death occurred. **Refers to a newly listed death ^Refers to updated information from OCME*

There were two (2) heat-related deaths reported this week. One of these individuals was suspected or presumed homeless.

There have been fourteen (14) heat-related deaths during the reporting period. One of these individuals was suspected or presumed homeless. For one individual there is not enough information to determine whether they are suspected or presumed homeless.

Heat Advisory criteria: The National Weather Service will issue a Heat Advisory when the heat index value is expected to reach 105 to 109 degrees within the next 12 to 24 hours. A Heat Advisory may be issued for lower criteria if it is early in the season or during a multiday heat wave. NWS will issue an Excessive Heat Warning when the heat index value is expected to reach or exceed 110 degrees within the next 12 to 24 hours. An Excessive Heat Warning may be issued for lower criteria if it is early in the season or during a multiday heat wave.

Suspected Homeless Death Data: Office of the Chief Medical Examiner (OCME) Field Investigators use the U.S. Department of Health and Human Services (HHS) homeless definition to determine suspected homeless deaths. Homeless deaths are listed as suspected due to the limited information available to the Field Investigators at the time of investigation, which may result in some misclassifications.

For more information about extreme cold and emergency preparedness, follow the Office of Preparedness and Response on Twitter and Facebook.

For media inquiries, please contact the Office of Communications: 410-767-6490

Prepared by:

Office of Preparedness and Response
Maryland Department of Health
300 W. Preston Street, Suite 202
Baltimore, MD 21201

<http://preparedness.health.maryland.gov>

Peter Fotang, MD, MPH
Epidemiologist, Biosurveillance Program
Office: 410-767- 8438
Email: Peter.Fotang@maryland.gov

Jennifer Stanley, MPH
Epidemiologist, Biosurveillance Program
Office: 410-767-2074
Email: Jennifer.Stanley@maryland.gov

Kristin A. Dietz, MS
Chief, Local Health and Health Planning
Office: 410-767-0639
Email: Kristin.Dietz@maryland.gov