



2010

**Annual Report
Office of the
Chief Medical Examiner**

State of Maryland

Table of Contents

Cases Reported to OCME

- Action Taken1
- Autopsied2
- Manner of Death3

Manner of Death

- Classified by Sex4
- Classified by Race4

Medical Examiner Cases

- Cause and Manner of Death5
- A Three-Year Comparison7
- Manner and Jurisdiction8
- Type and Jurisdiction8

Toxicologic Testing

- Percentage of Cases Positive for Alcohol and/or Drugs9

Drug Abuse Death

- By Jurisdiction (3-Year Comparison)10
- Undetermined Manner Only11

Homicide Deaths

- Cause of Death12
- A Five-Year Comparison13
- Deaths by Age14

Firearm Deaths

- A Five-Year Comparison15

Sudden Infant Death Syndrome

- A Five-Year Comparison16
- Classified by Age17
- Classified by Race and Sex17

Sudden Unexplained Death in Infancy

- Classified by Age18
- Classified by Race and Sex18

Suicide Death

- Cause of Death19
- Youth Suicides20
- Deaths by Age21

Transportation Deaths

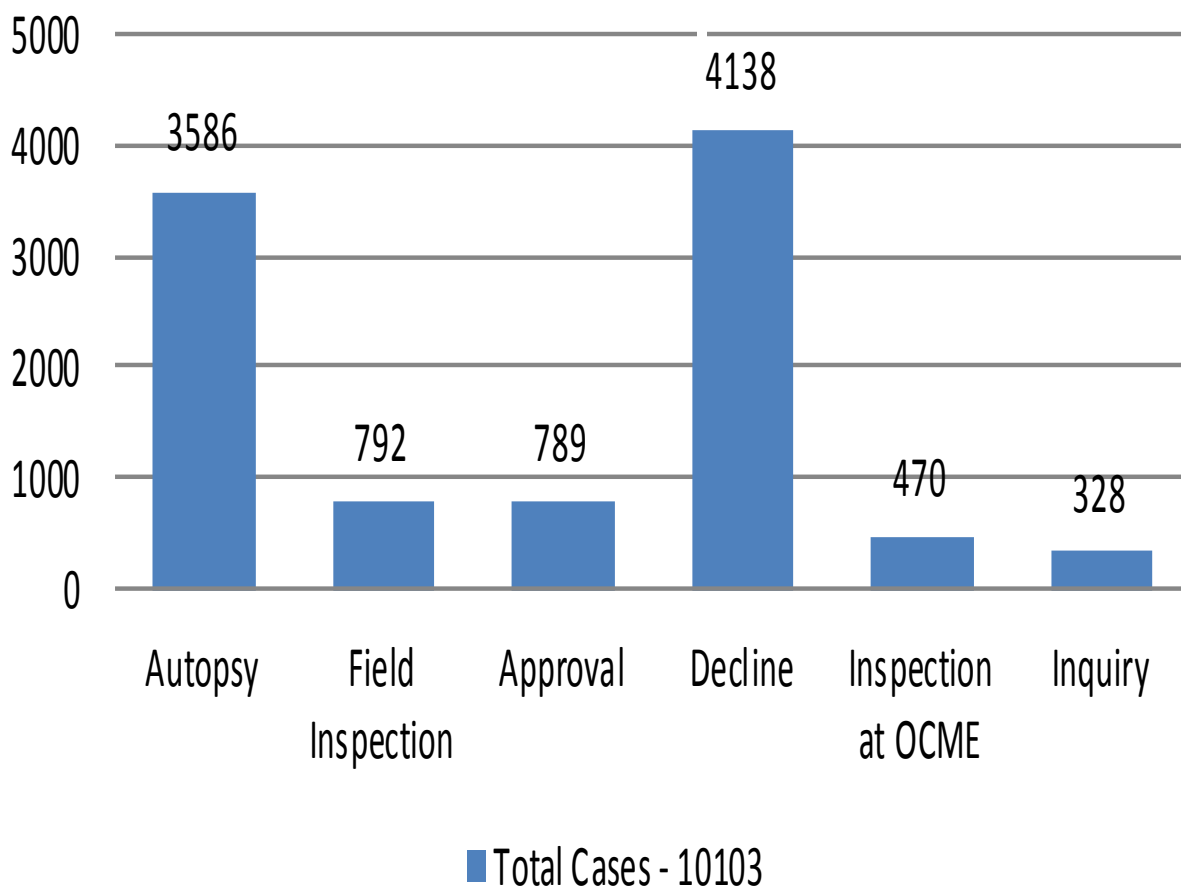
- Classified by Activity22
- Type of Vehicle23
- Classified by Age24
- Alcohol/Drug Results25
- Alcohol Levels in Cases Testing Positive26

Addendum

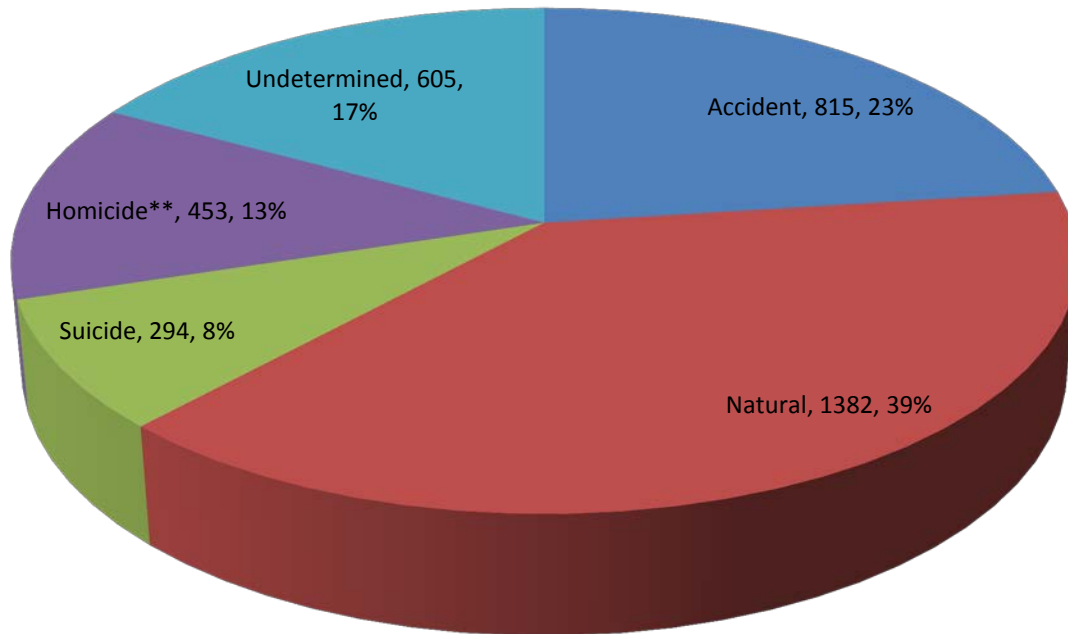
- Miscellaneous Data27

Cases Reported to OCME -2010

Action Taken



2010 Medical Examiner Cases Autopsied*



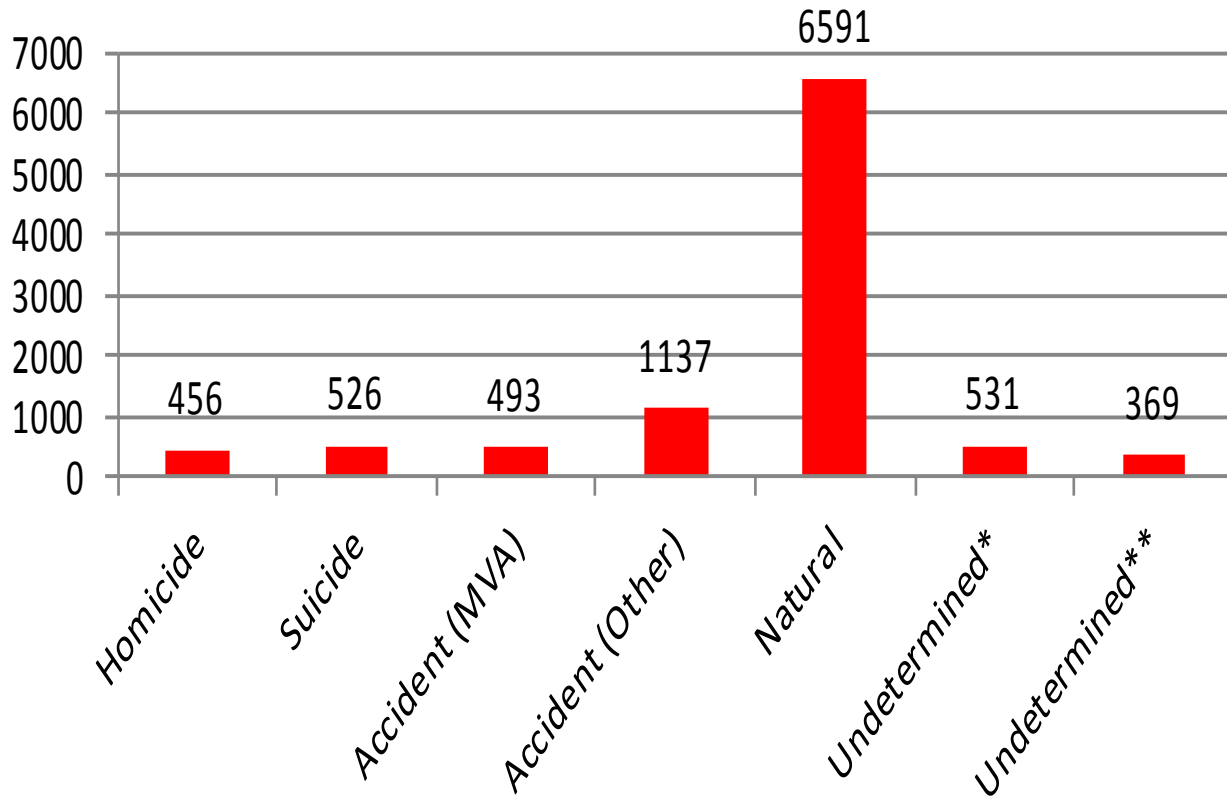
Total Cases Autopsied - 3586

*Thirty-seven cases were classified as “not applicable” (e.g. stillborn & non-human remains).

**Three homicides were not autopsied due to final disposition prior to Medical Examiner notification

2010 Cases Reported to OCME

Manner of Death



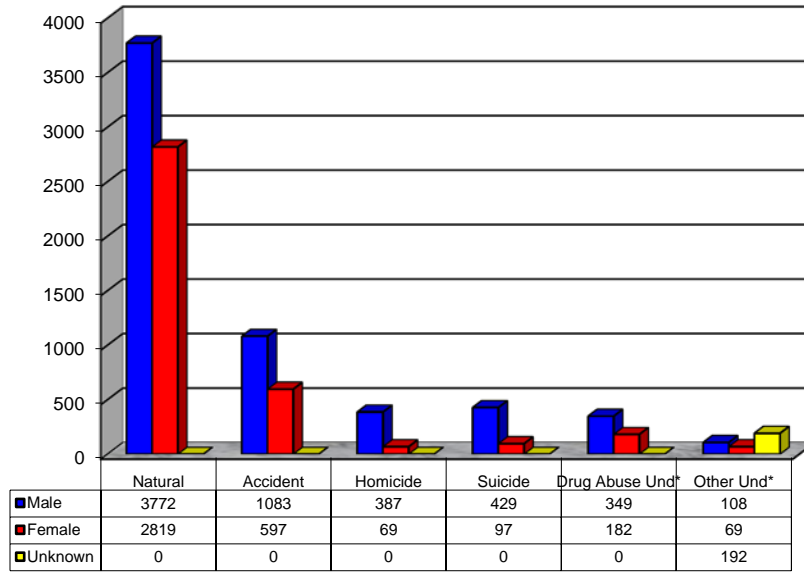
*Undetermined Manner: Drugs/Narcotics

** Undetermined Manner: Other

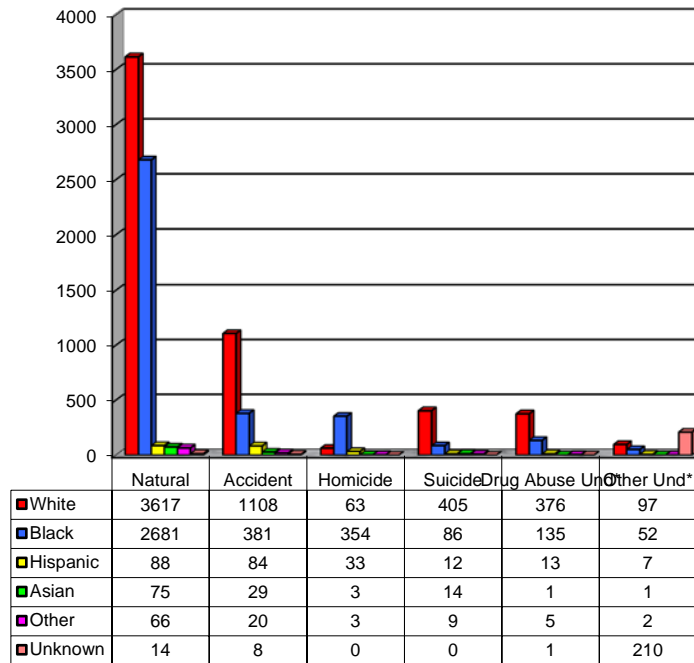
Total Cases - 10103

Manner of Death 2010

Classified by Sex



Classified by Race



*Undetermined

Medical Examiner Cases - 2010
Cause and Manner of Death

Cause of Death	Manner of Death					Total
	Natural	Homicide	Suicide	Accident	Undetermined	
<i>Infectious disease</i>						
AIDS	34	-	-	-	-	34
Other	41	-	-	-	-	41
<i>Malignant neoplasms (Cancer)</i>	414	-	-	-	-	414
<i>Endocrine and metabolic disease</i>						
Diabetes	62	-	-	-	-	62
Other	2	-	-	-	-	2
<i>Mental Disorders</i>						
Alcohol abuse	97	-	-	-	-	97
Other	4	-	-	-	-	4
<i>Nervous system disease</i>						
Meningitis	21	-	-	-	-	21
Seizure disorder	33	-	-	-	7	40
Other	40	-	-	-	-	40
<i>Circulatory system disease</i>						
Hypertensive cardiovascular disease	2172	-	-	-	-	2172
Arteriosclerotic cardiovascular disease	2215	-	-	-	-	2215
Cardiac arrhythmia	137	-	-	-	-	137
Cardiomyopathy	30	-	-	-	-	30
Pulmonary embolism	57	-	-	18	-	75
Cerebrovascular disease	53	-	-	-	-	53
Aneurysm	89	-	-	-	-	89
Hemorrhage	160	-	-	-	-	160
Other	54	-	-	-	-	54
<i>Respiratory system diseases</i>						
Respiratory distress syndrome	14	-	-	-	-	14
Pneumonia	102	-	-	-	-	102
Chronic obstructive pulmonary disease	82	-	-	-	-	82
Asthma	59	-	-	-	-	59
Other	110	-	-	-	-	110
<i>Digestive system disease</i>						
Fatty liver	3	-	-	-	-	3
Cirrhosis	58	-	-	-	-	58
Gastrointestinal hemorrhage	28	-	-	-	-	28
Other	57	-	-	-	-	57
<i>Congenital anomalies</i>	10	-	-	-	-	10
<i>Perinatal conditions</i>	1	-	-	-	-	1
<i>Ill-defined conditions</i>						
Sudden Infant Death Syndrome	11	-	-	-	-	11
Other	2	-	-	-	34	36

Cause of Death	Manner of Death					Total
	Natural	Homicide	Suicide	Accident	Undeter- Mined	
<i>Traumatic injury</i>						
Head/Chest injuries	-	13	-	249	15	277
Multiple injuries	-	26	21	498	10	555
Blunt force	-	23	-	15	-	38
Gunshot wound	-	321	222	1	1	545
Sharp force/cutting	-	57	10	-	-	67
Fracture	-	-	-	146	-	146
Other trauma	-	-	-	17	-	13
<i>Poisoning</i>						
Alcohol intoxication Drug	-	-	-	37	14	51
intoxication/abuse Alcohol	-	-	48	12	33	93
and drug intoxication Carbon	-	-	-	-	14	14
monoxide	-	-	17	17	1	35
Cocaine intoxication	-	-	-	5	26	31
Cocaine and alcohol intoxication	-	-	-	-	11	11
Cocaine and narcotic intoxication	-	-	-	-	75	75
Narcotic intoxication	8	-	5	12	284	309
Narcotic and alcohol intoxication	-	-	-	-	91	91
Inhalant intoxication	-	-	-	-	-	-
<i>Asphyxiation</i>						
Airway obstruction/Aspirated stomach	-	-	-	27	-	27
content	-	-	144	-	-	144
Hanging	-	-	-	18	2	20
Smoke inhalation	-	-	48	-	-	54
Strangulation/Asphyxiation	-	6	-	-	-	4
Suffocation	-	4	-	-	-	78
Drowning	-	-	9	62	7	35
Unspecified type of asphyxia	-	-	-	35	-	45
<i>Hypothermia</i>	-	-	-	45	-	45
<i>Hyperthermia</i>	-	-	-	4	-	4
<i>Thermal Injuries (Burns)</i>	-	-	-	35	1	36
<i>Electrocution</i>	-	-	-	4	-	4
<i>Other non-natural cause</i>	-	6	2	373	259	640
<i>Other natural cause</i>	331	-	-	-	-	331
<i>Unknown cause</i>	-	-	-	-	6	6
<i>Non-human remains</i>	-	-	-	-	9	9
<i>Accident during surgery/medical procedure</i>	-	-	-	4	-	4
TOTAL	6561	456	526	1630	900	10103

Manner of Death - 3 Year Comparison

Medical Examiner Cases*:
Manner of Death, Maryland 2010

Manner of Death	Number	%
Natural	6591	65.2%
Homicide	456	4.5%
Suicide	526	5.2%
Accident	1630	16.1%
Undetermined	900	8.9%
Total	10103	100%

Medical Examiner Cases:
Manner of Death, Maryland 2009

Manner of Death	Number	%
Natural	6703	65.5%
Homicide	486	4.7%
Suicide	562	5.5%
Accident	1613	15.8%
Undetermined	872	8.5%
Total	10236	100.0%

Medical Examiner Cases:
Manner of Death, Maryland 2008

Manner of Death	Number	%
Natural	6335	64.3%
Homicide	550	5.6%
Suicide	485	4.9%
Accident	1613	16.4%
Undetermined	873	8.9%
Total	9856	100.0%

*Because of rounding, percentages do not necessarily total 100.

2010 Manner and Jurisdiction (Three cases out of state)

County	Natural	Accident	Homicide	Suicide	Undetermined	Total
Allegany	89	53	6	14	18	180
Anne Arundel	606	95	15	56	56	828
Baltimore County	586	196	16	68	108	974
Calvert	102	17	1	8	6	134
Caroline	8	10	0	2	1	21
Carroll	70	43	4	17	14	148
Cecil	69	33	7	11	58	178
Charles	69	18	2	10	15	114
Dorchester	25	5	2	4	6	42
Frederick	72	46	6	18	157	299
Garrett	24	11	1	2	2	40
Harford	277	70	4	27	40	418
Howard	109	34	4	21	11	179
Kent	18	8	0	4	5	35
Montgomery	605	178	18	71	40	912
Prince George's	1172	185	109	52	63	1581
Queen Anne's	16	12	1	4	6	39
St. Mary's	38	23	1	11	14	87
Somerset	26	6	0	1	3	36
Talbot	55	19	1	7	4	86
Washington	160	62	0	13	21	256
Wicomico	214	39	12	13	15	293
Worcester	52	19	1	9	16	97
Baltimore City	2127	448	245	82	220	3122
Total	6591	1630	456	526	900	10103

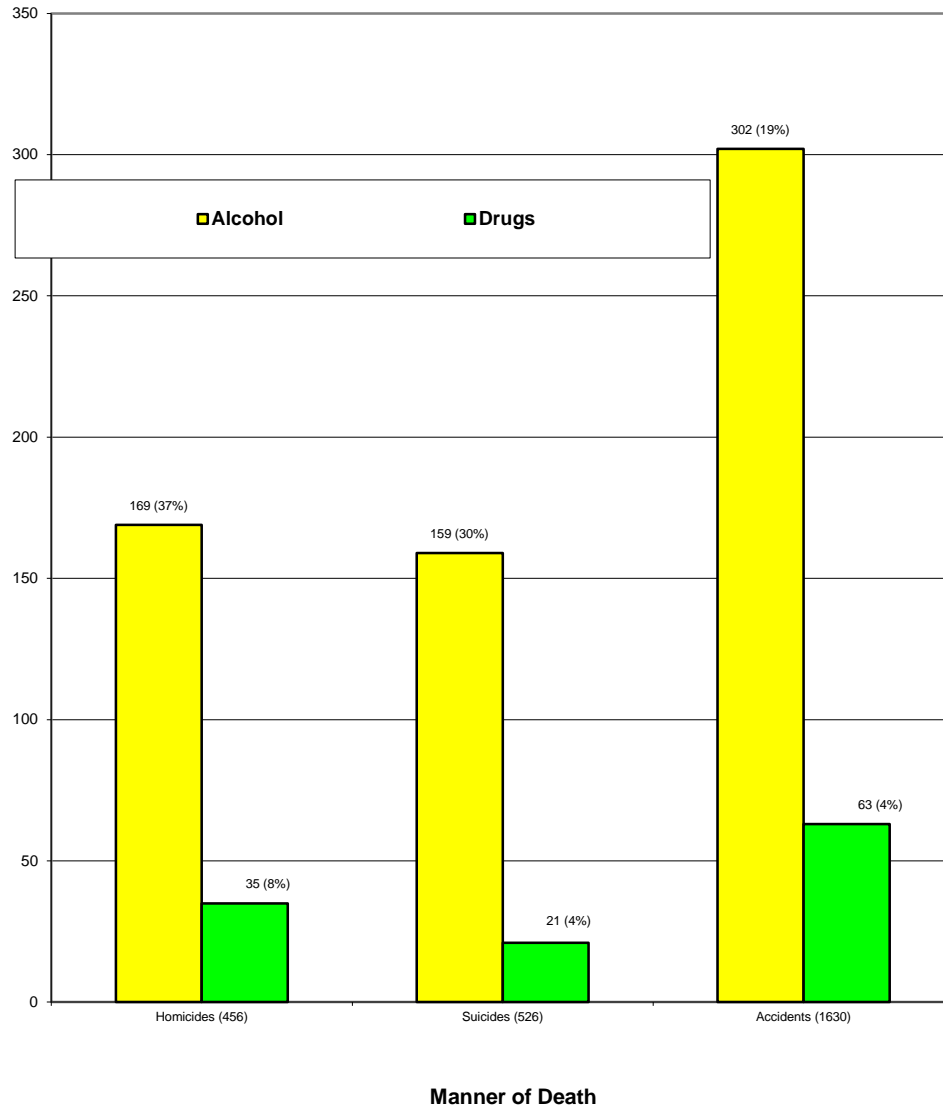
Case Type and Jurisdiction (Three cases out of state).

<u>County</u>	<u>Autopsy</u>	<u>OCME Inspections</u>	<u>Field Inspections</u>	<u>Inquiry</u>	<u>Approval</u>	<u>Decline</u>	<u>TOTAL</u>
Allegany	78	14	27	6	23	32	180
Anne Arundel	275	22	75	26	36	394	828
Baltimore County	390	43	90	33	117	301	974
Calvert	49	4	12	2	3	64	134
Caroline	13	1	2	1	2	2	21
Carroll	79	3	18	14	15	19	148
Cecil	106	20	19	1	5	27	178
Charles	62	4	15	7	1	25	114
Dorchester	22	2	6	1	0	11	42
Frederick	89	145	16	4	18	27	299
Garrett	18	2	9	1	2	8	40
Harford	166	8	30	11	32	171	418
Howard	89	7	22	7	12	42	179
Kent	19	2	3	3	0	8	35
Montgomery	279	23	92	24	95	399	912
Prince George's	489	22	121	21	67	861	1581
Queen Anne's	23	0	4	4	2	6	39
St. Mary's	52	5	6	4	10	10	87
Somerset	16	1	5	2	0	12	36
Talbot	36	2	10	4	7	27	86
Washington	95	8	26	7	33	87	256
Wicomico	95	3	35	8	24	128	293
Worcester	45	11	13	3	4	21	97
Baltimore City	1000	118	134	134	281	1455	3122
Total	3586	470	792	328	789	4138	10103

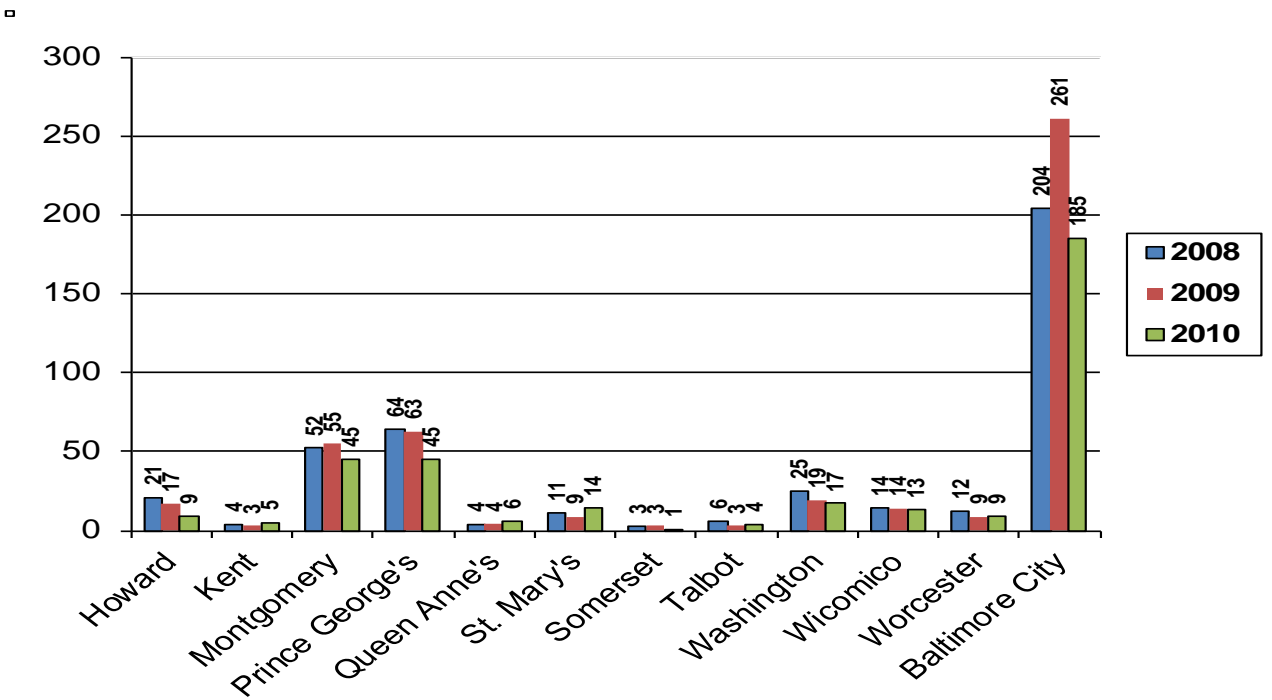
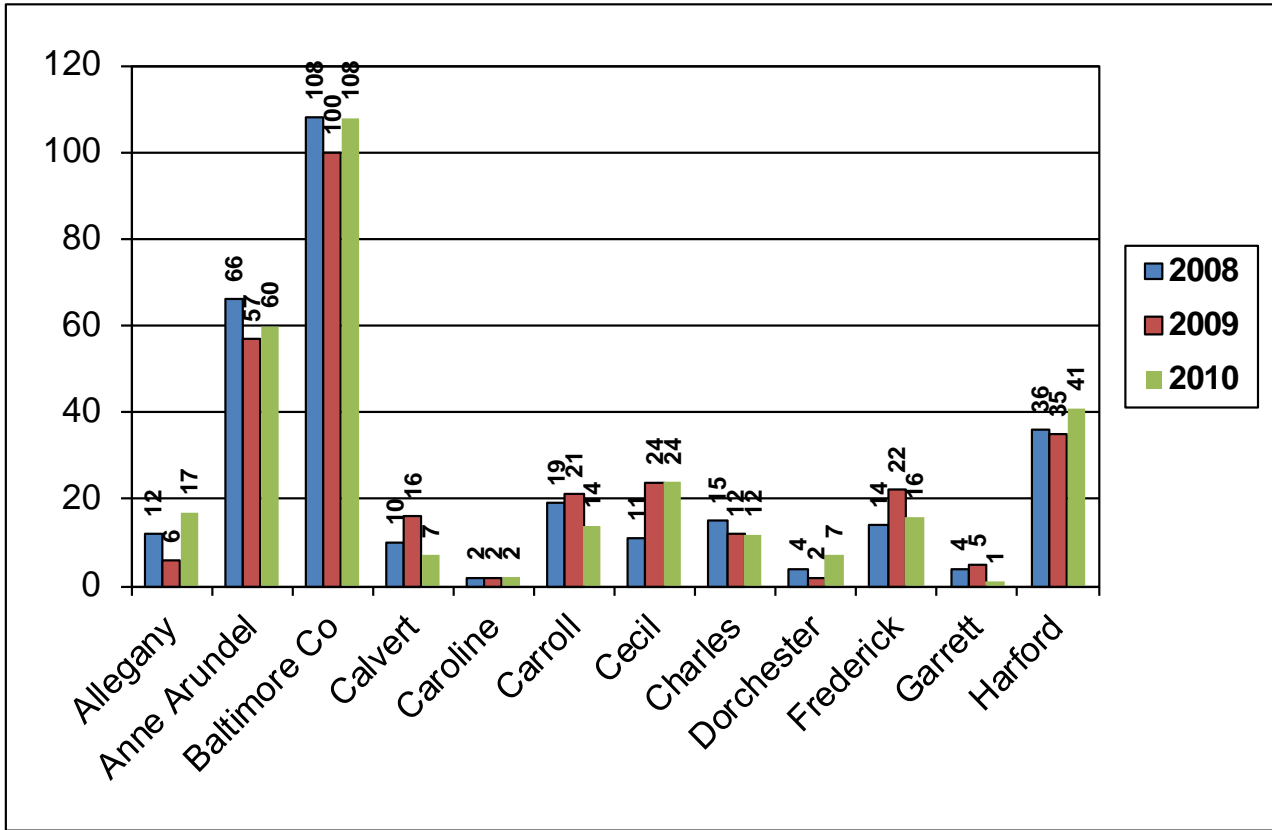
2010 Toxicology Testing

of Cases Positive for Alcohol and/or Drugs*
(Percentage of the Manner of Death)

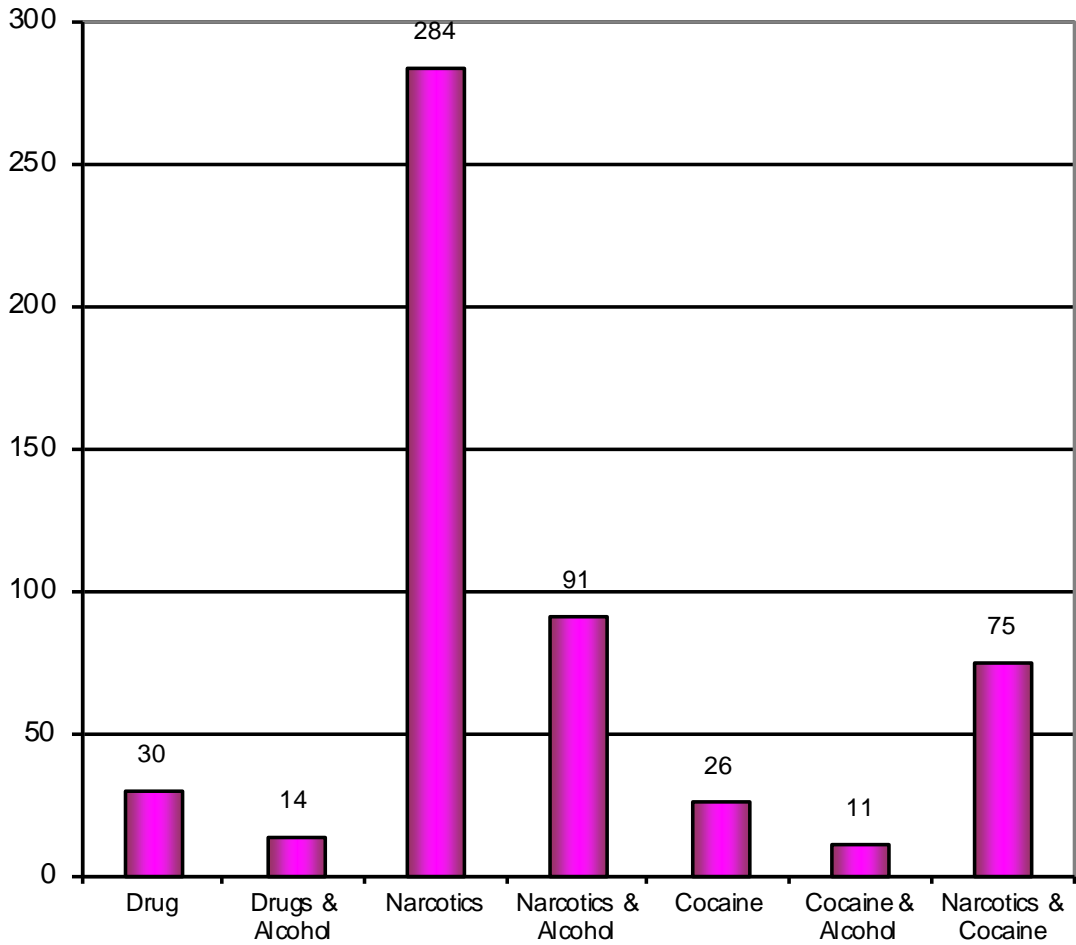
*Drugs include heroin, morphine, cocaine, methadone and phencyclidine.



Drug Abuse Deaths 3 Year Comparison 2008-2010



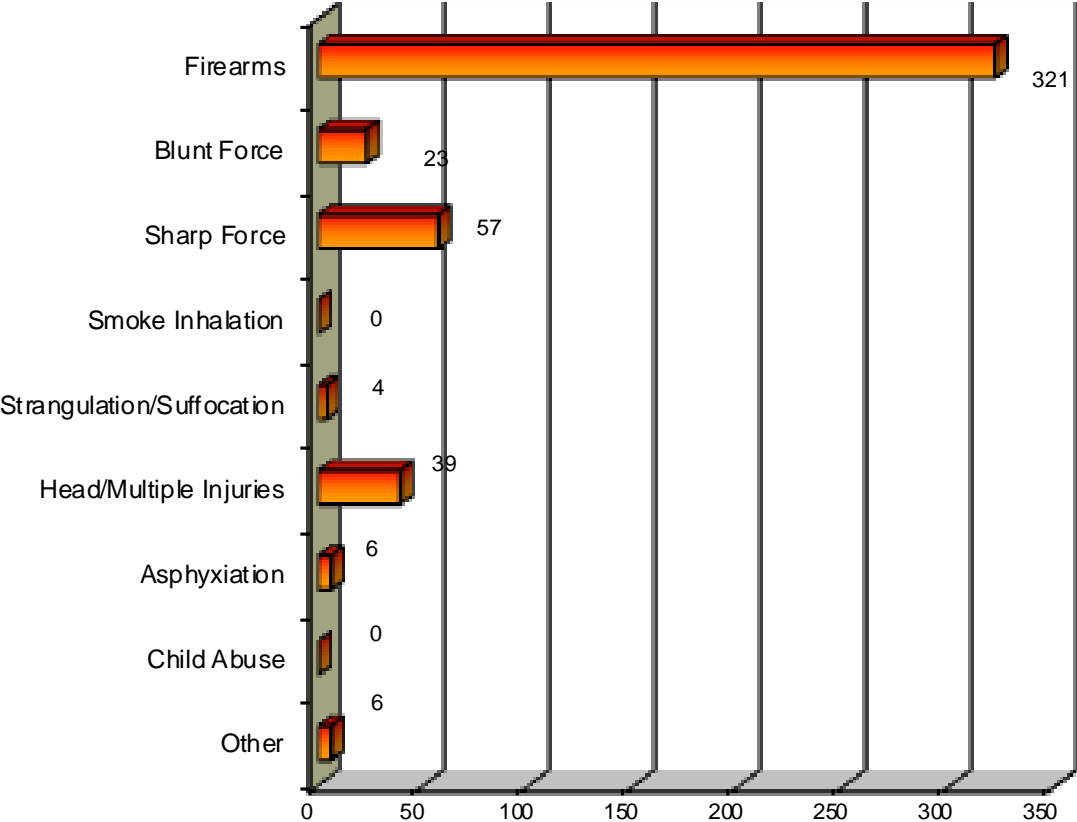
2010 Drug Abuse Deaths Undetermined Manner



Narcotics include Heroin, Morphine, Methadone, Phencyclidine
Drugs include Prescription Medications

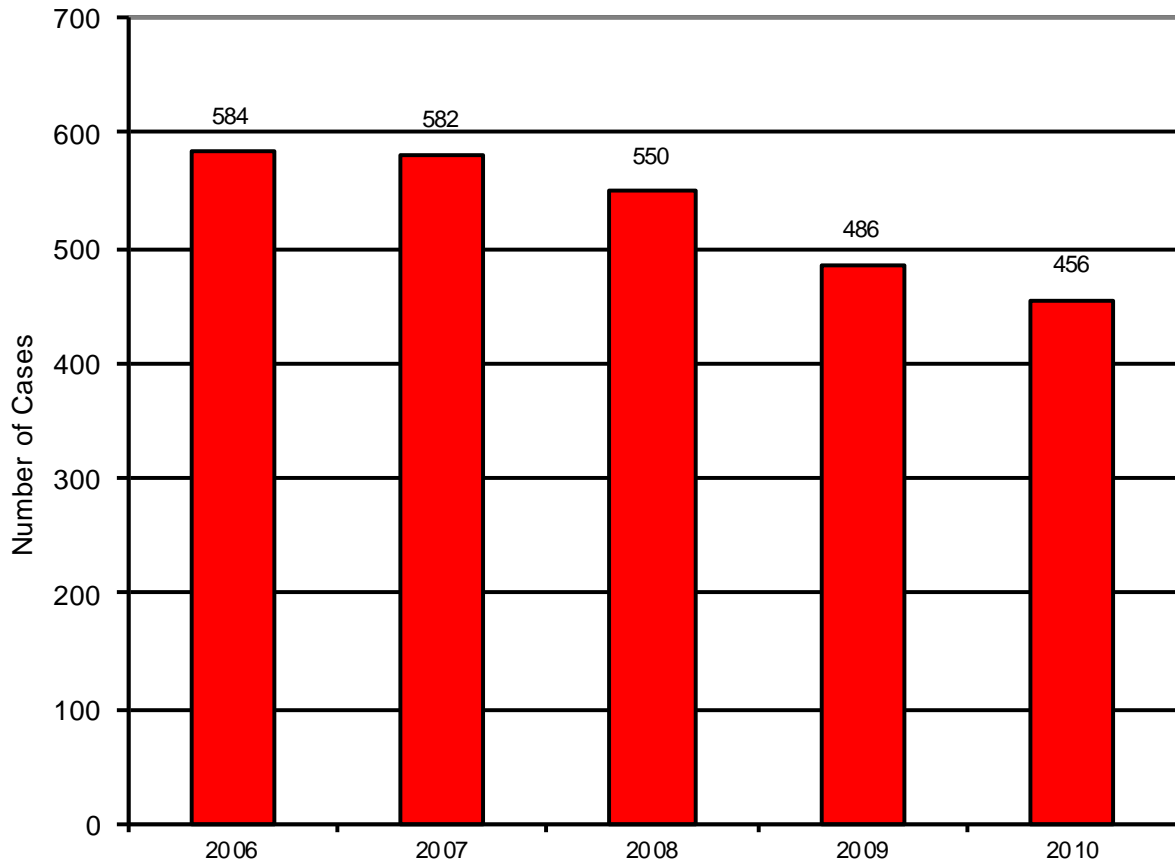
Total Cases - 531

2010 Homicide Deaths Cause of Death

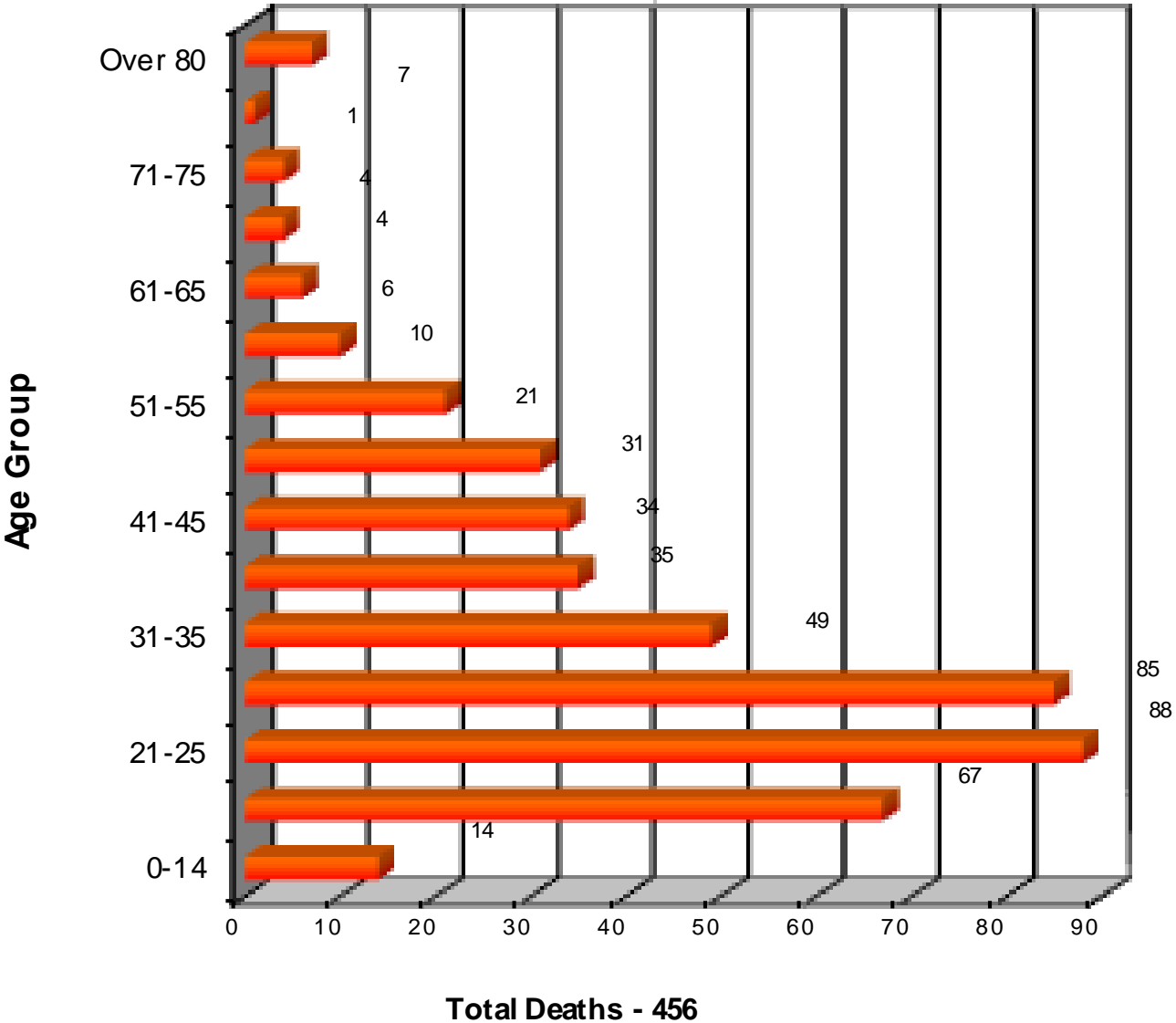


Total Deaths - 456

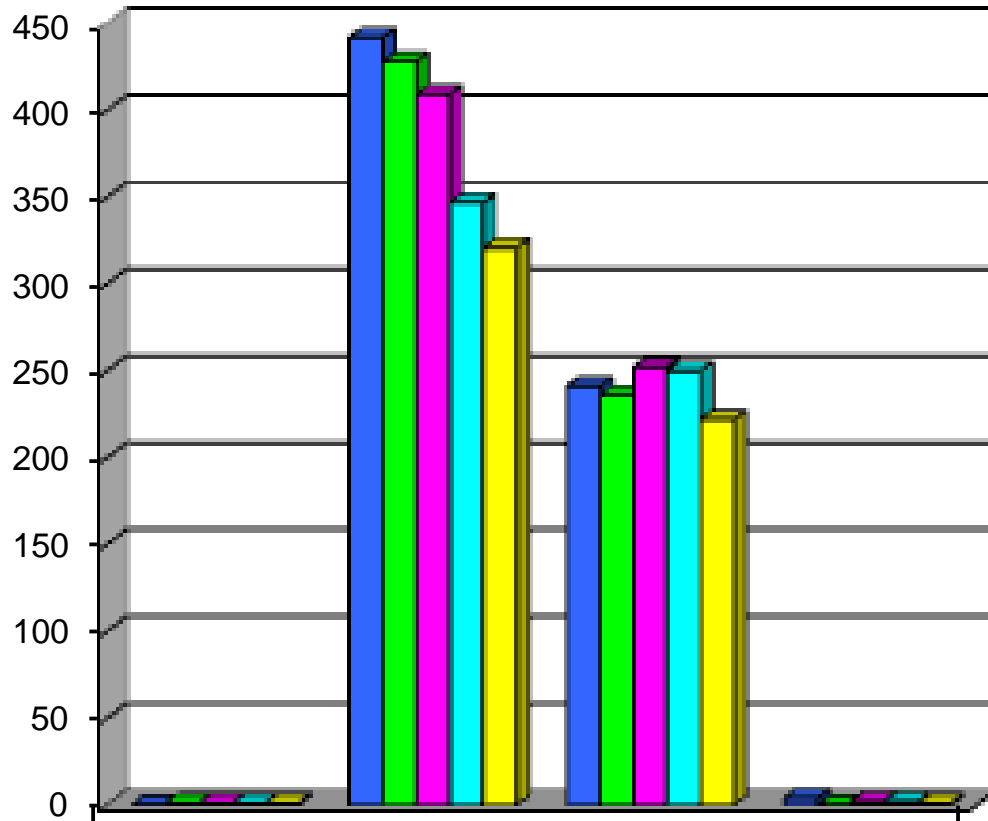
Homicides 5 Year Comparison 2006 - 2010



2010 Homicides Deaths by Age

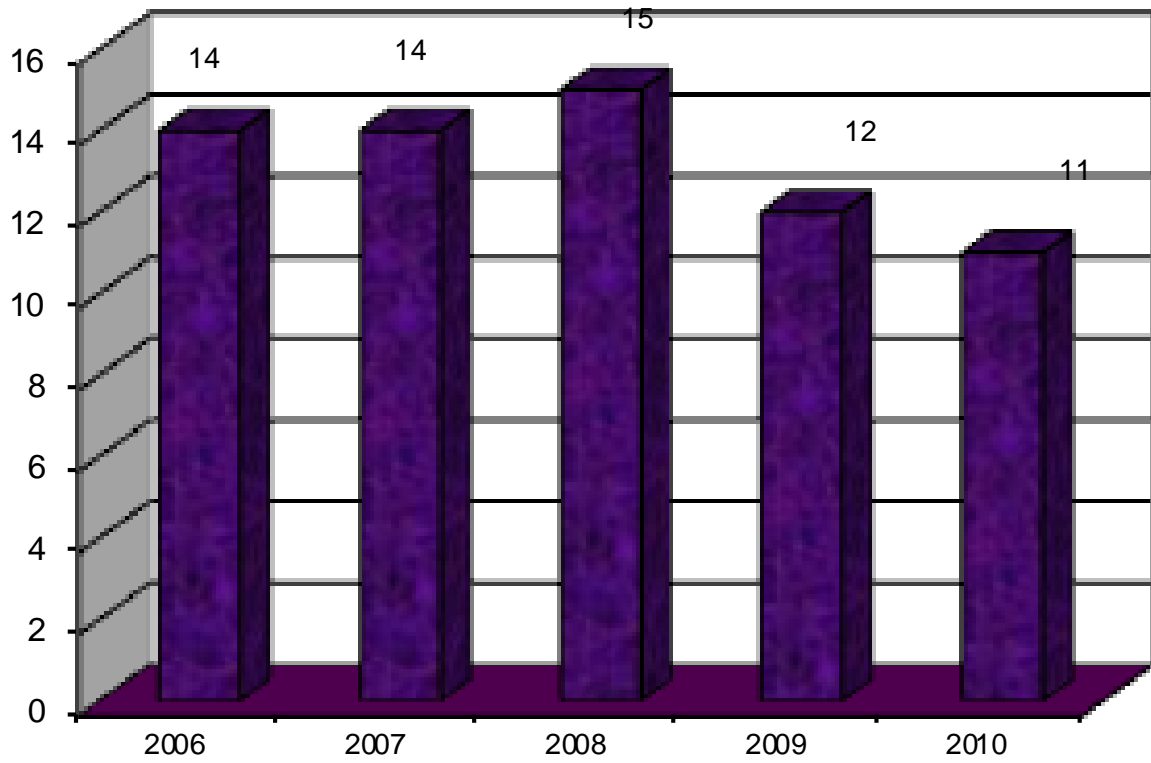


Firearm Deaths 2006 - 2010

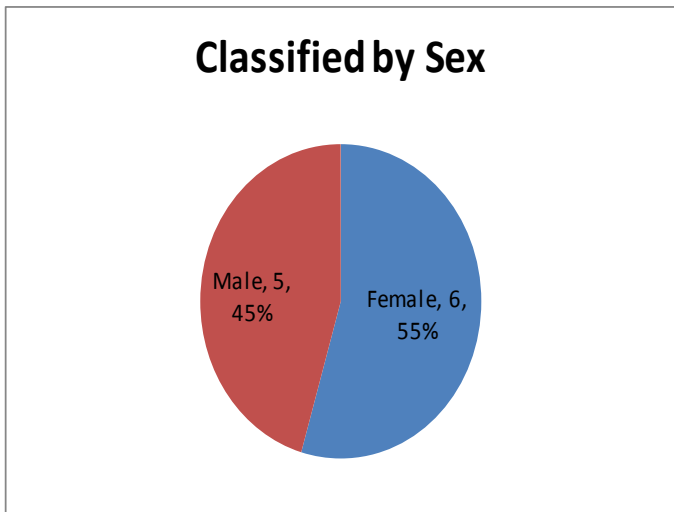
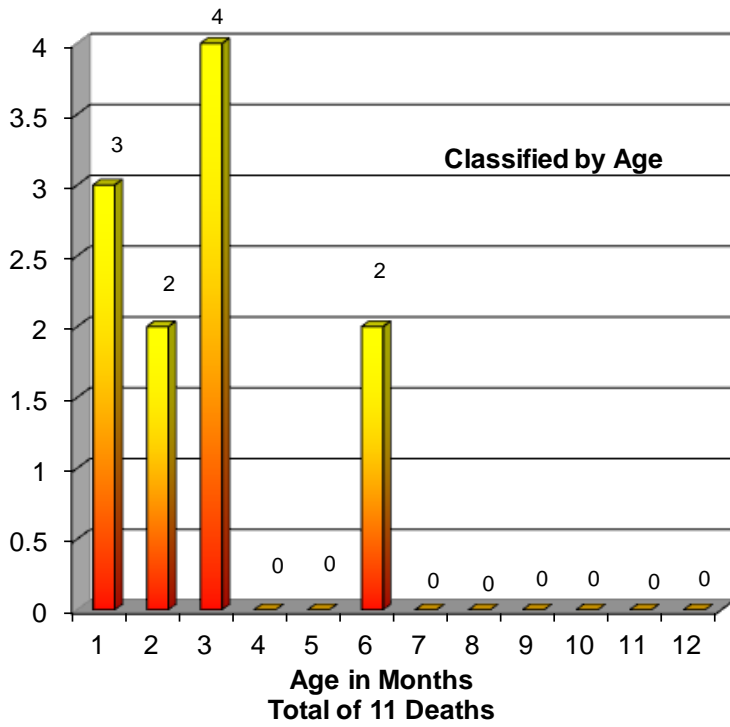


	Accident	Homicide	Suicide	Undetermined
2006	0	442	241	4
2007	1	428	236	0
2008	1	409	252	2
2009	1	347	250	2
2010	1	321	222	1

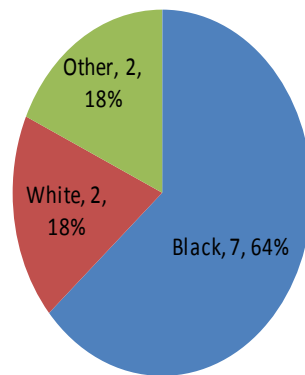
SIDS Deaths 2006 - 2010 Comparison



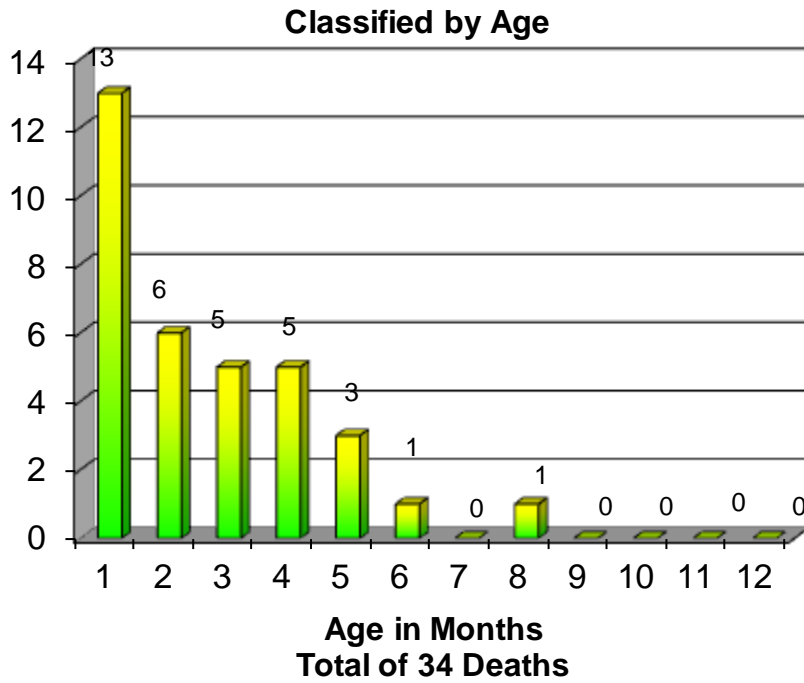
Sudden Infant Death Syndrome - 2010



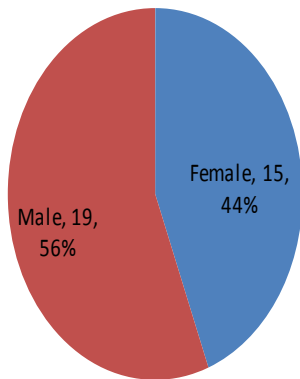
Classified by Race



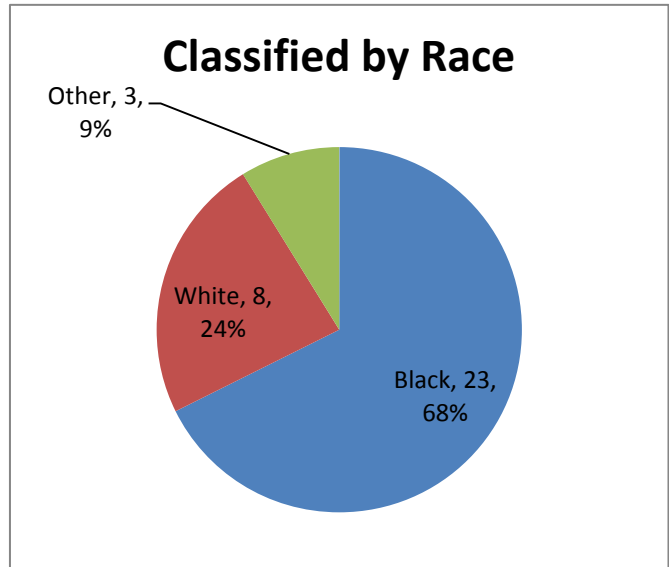
Sudden Unexplained Death in Infancy - 2010



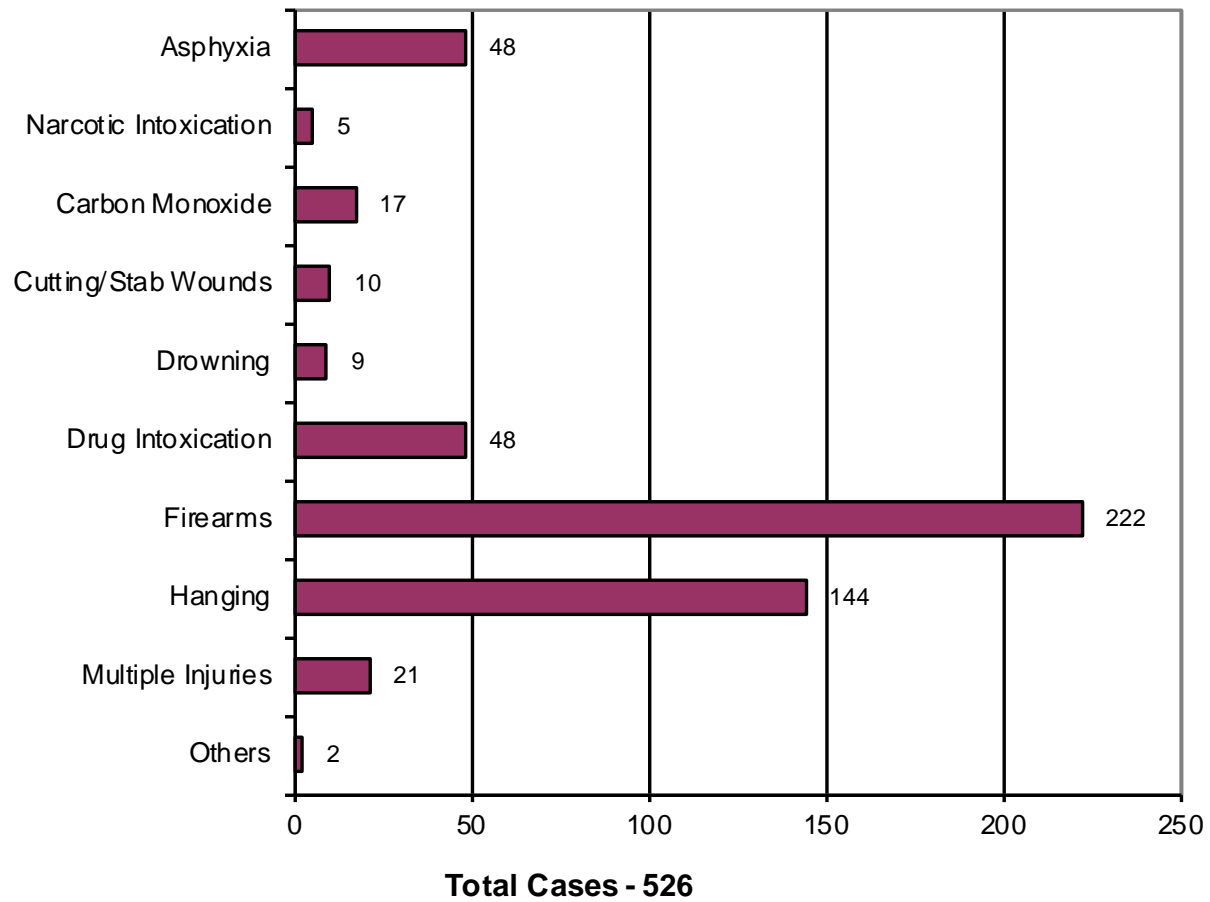
Classified by Sex



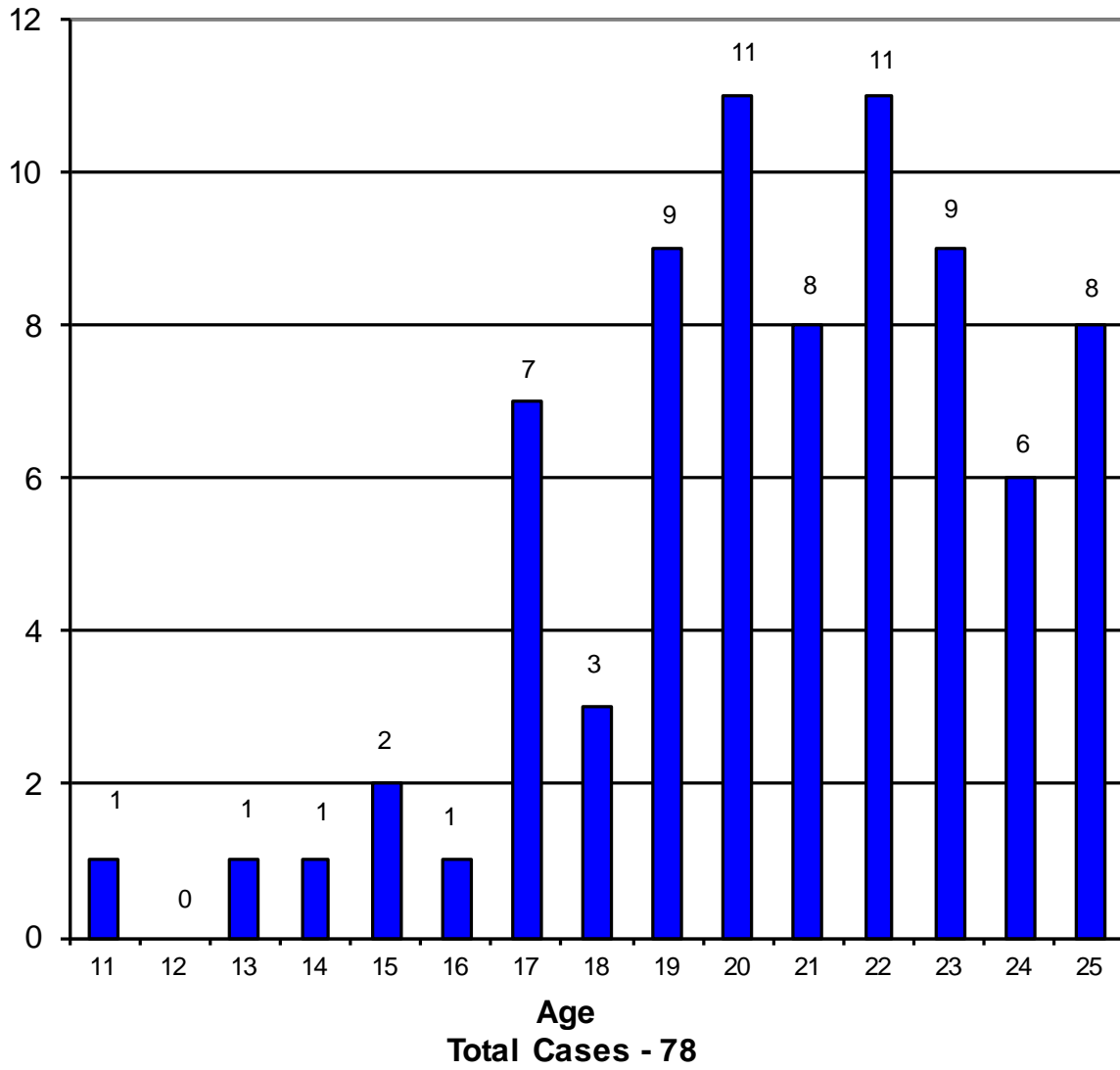
Classified by Race



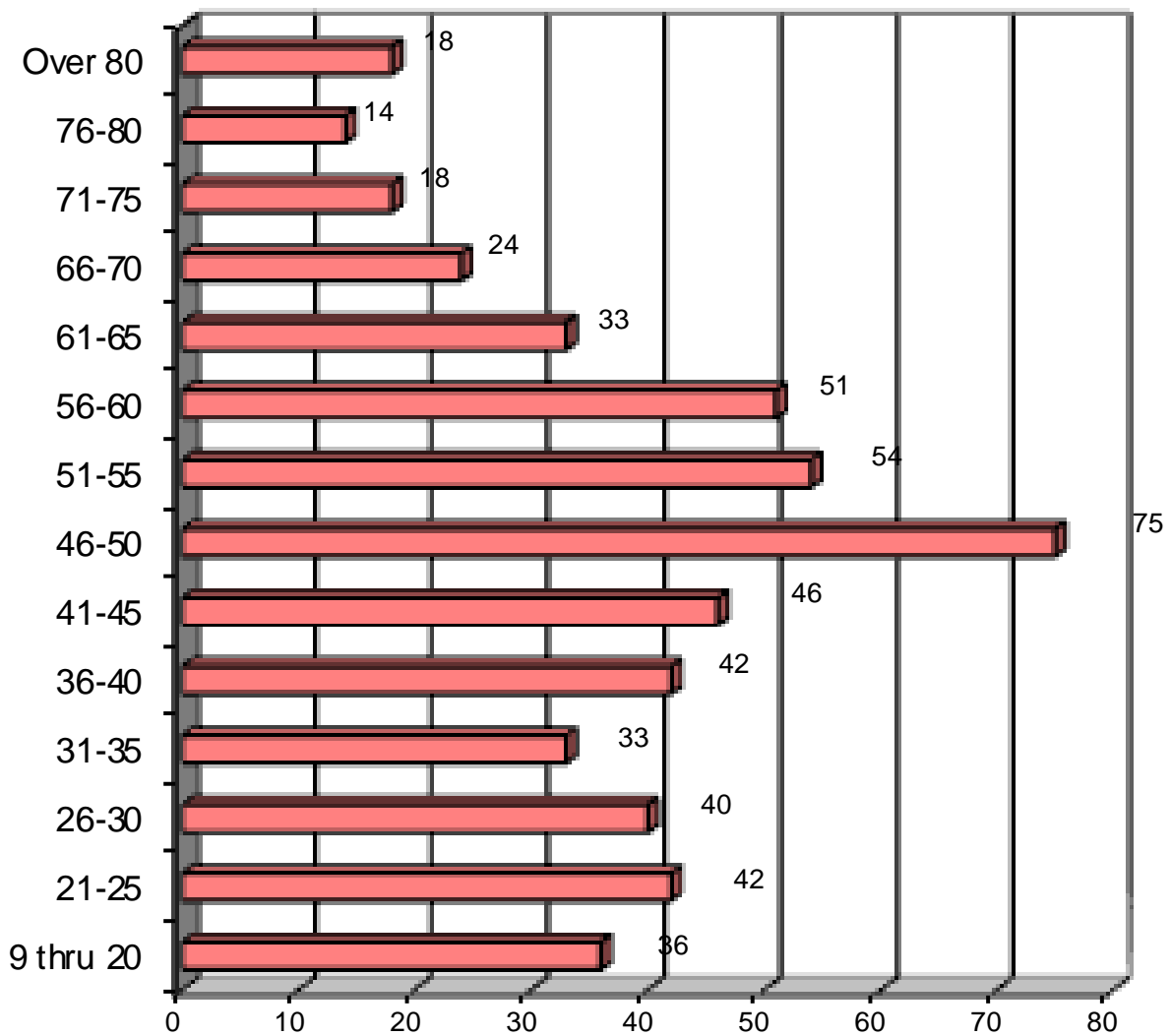
2010 Suicide Deaths Classified by Cause of Death



2010 Youth Suicides 25 Years of Age and Under

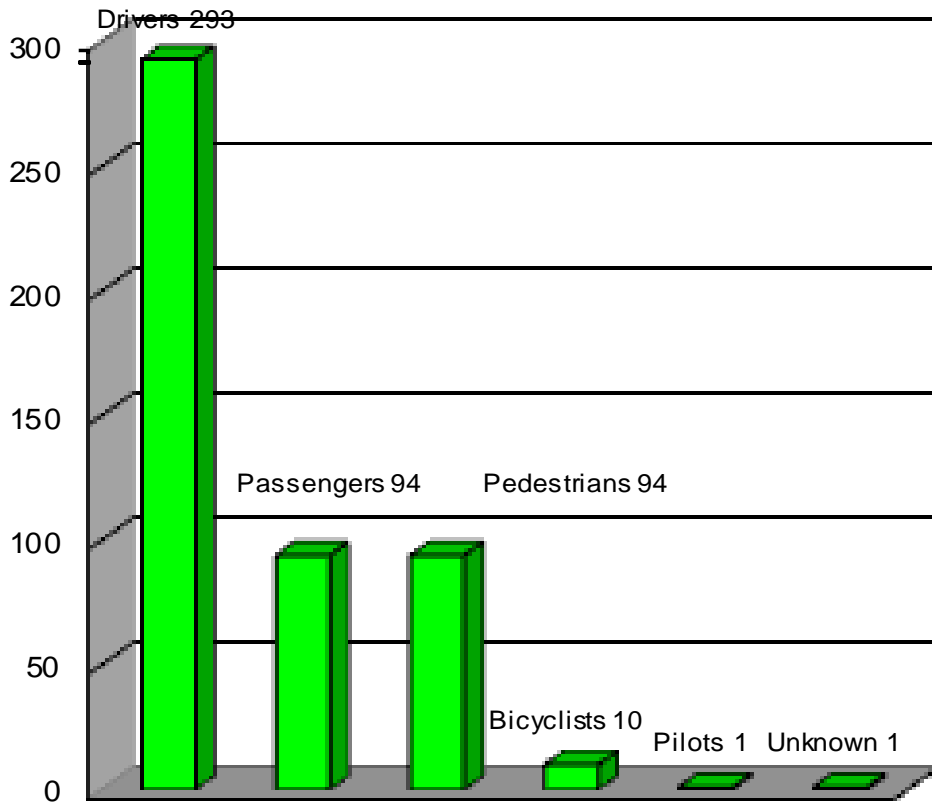


2010 Suicide Deaths by Age



Total Deaths - 526

2010 Transportation Accidents* Classified by Activity

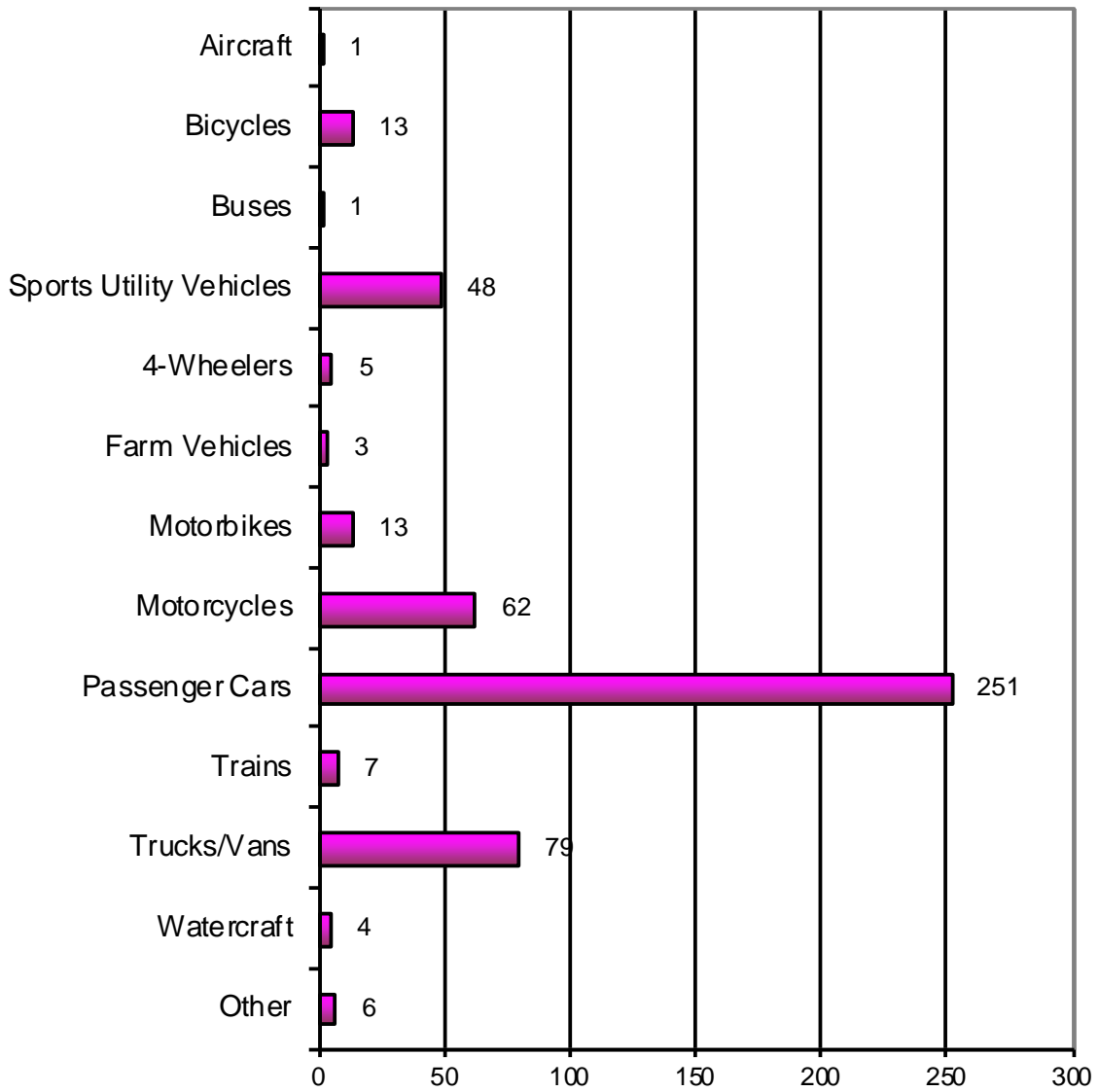


*Includes motor vehicles, boats, planes, bicycles and trains

Total Cases - 493

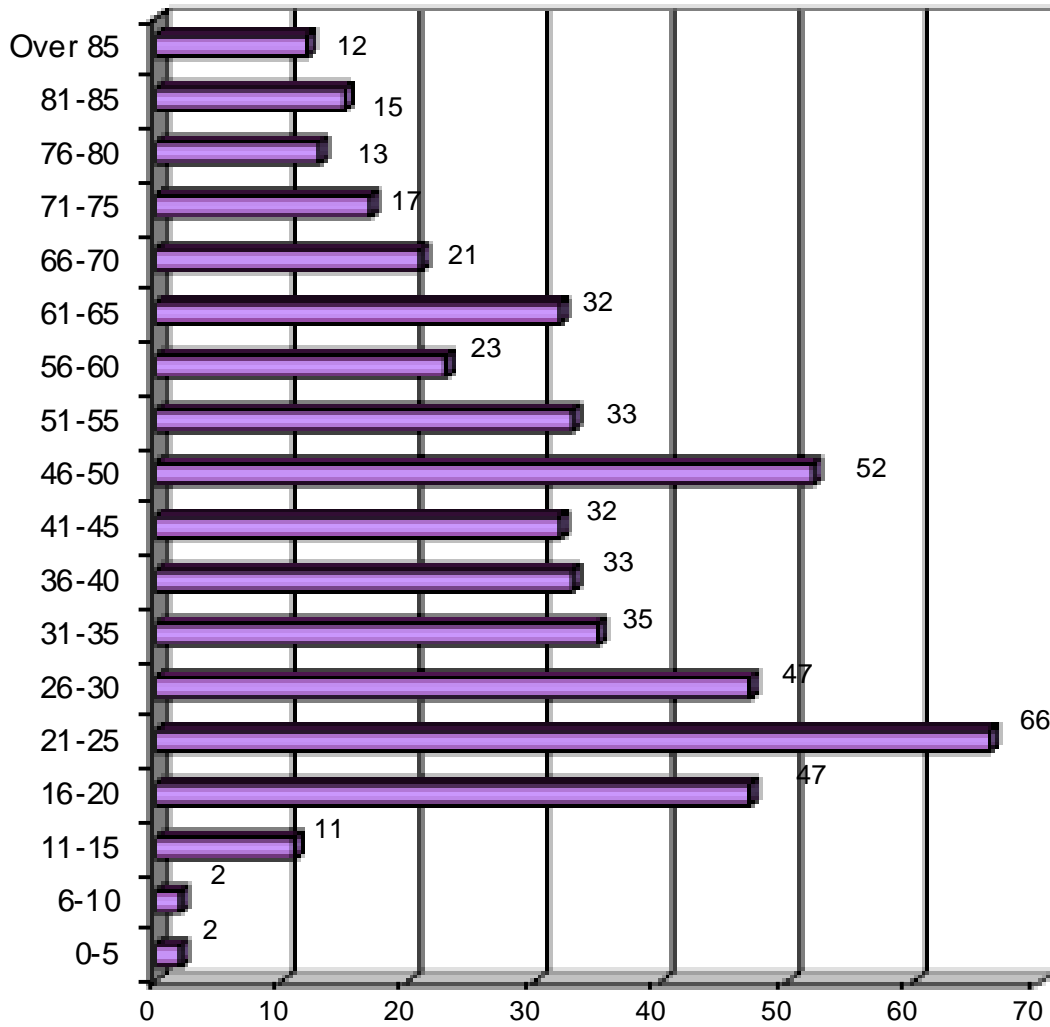
2010 Transportation Deaths

Type of Vehicle



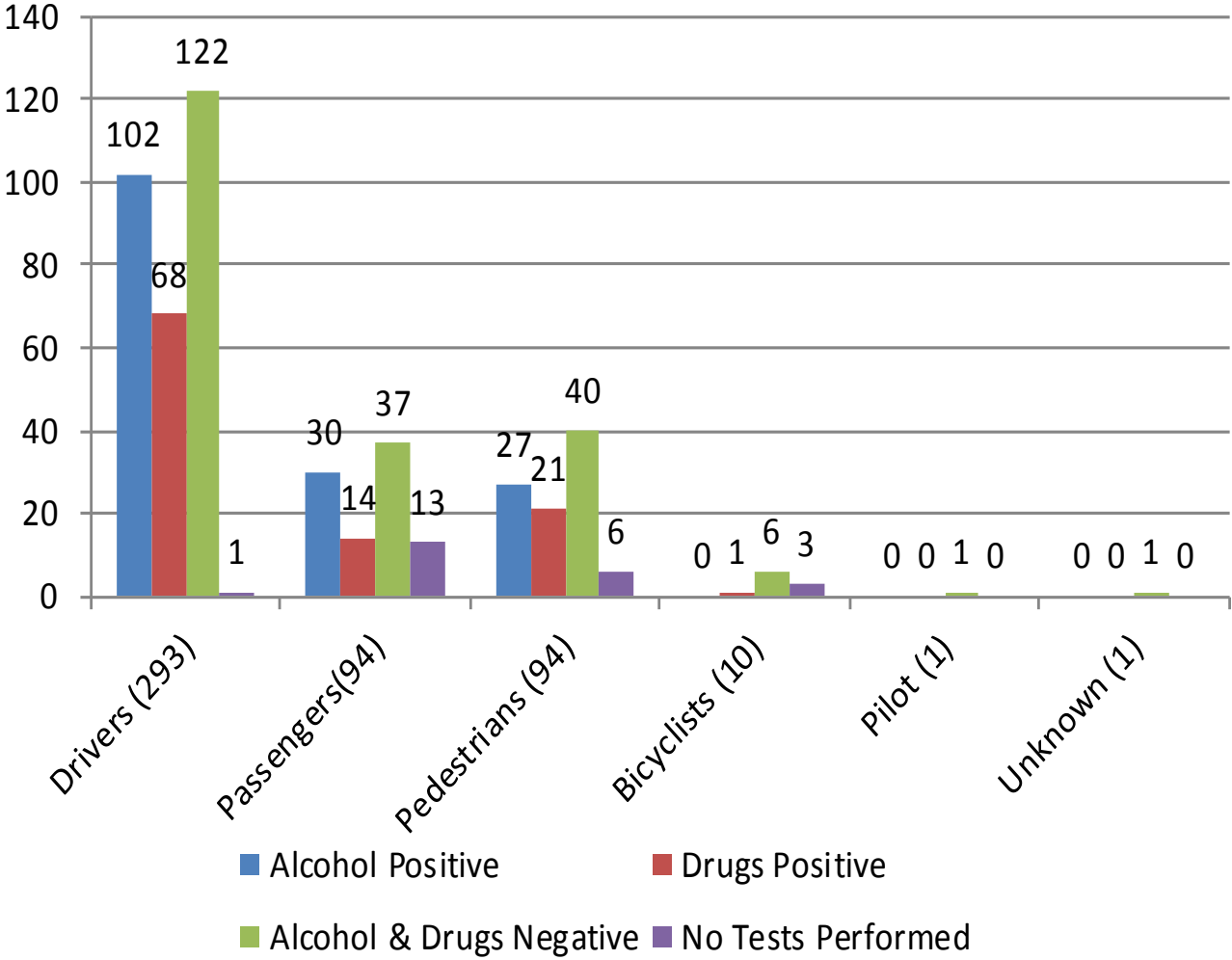
Total Cases - 493

2010 Transportation Deaths By Age



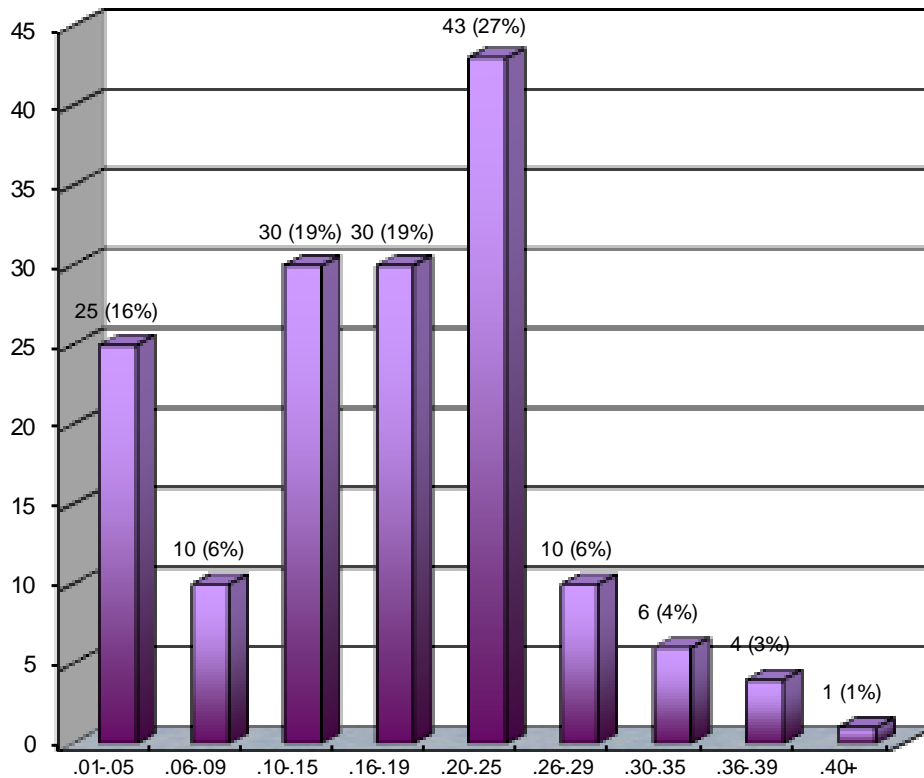
Total Cases - 493

2010 Transportation Accidents Alcohol/Drug Results



493 Transportation Deaths

2010 Transportation Deaths Blood Alcohol Concentration in 159 Cases 38%* Tested Positive



**493 Transportation Deaths
263 Negative for Alcohol
71 No Testing Performed**

*Percent based on total cases tested for alcohol

ADDENDUM

Miscellaneous Data

1. Number of autopsies 2,816
Number of partial autopsies 770
2. Organ donations 81
3. Unclaimed bodies released to State Anatomy Board 138
4. Exhumations None
5. Bodies transported to the OCME 3,948