



2011

**Annual Report
Office of the
Chief Medical Examiner**

State of Maryland

Table of Contents

Cases Reported to OCME

- Action Taken1
- Autopsied2
- Manner of Death3

Manner of Death

- Classified by Sex4
- Classified by Race4

Medical Examiner Cases

- Cause and Manner of Death5
- A Three-Year Comparison.....7
- Manner and Jurisdiction8
- Type and Jurisdiction8

Toxicologic Testing

- Percentage of Cases Positive for Alcohol and/or Drugs.....9

Drug Abuse Death

- By Jurisdiction (3-Year Comparison)10
- Undetermined Manner Only11

Homicide Deaths

- Cause of Death12
- A Five-Year Comparison.....13
- Deaths by Age.....14

Firearm Deaths

- A Five-Year Comparison.....15

Sudden Infant Death Syndrome

- A Five-Year Comparison.....16
- Classified by Age17
- Classified by Race and Sex17

Sudden Unexplained Death in Infancy

- Classified by Age18
- Classified by Race and Sex18

Suicide Death

- Cause of Death19
- Youth Suicides20
- Deaths by Age.....21

Transportation Deaths

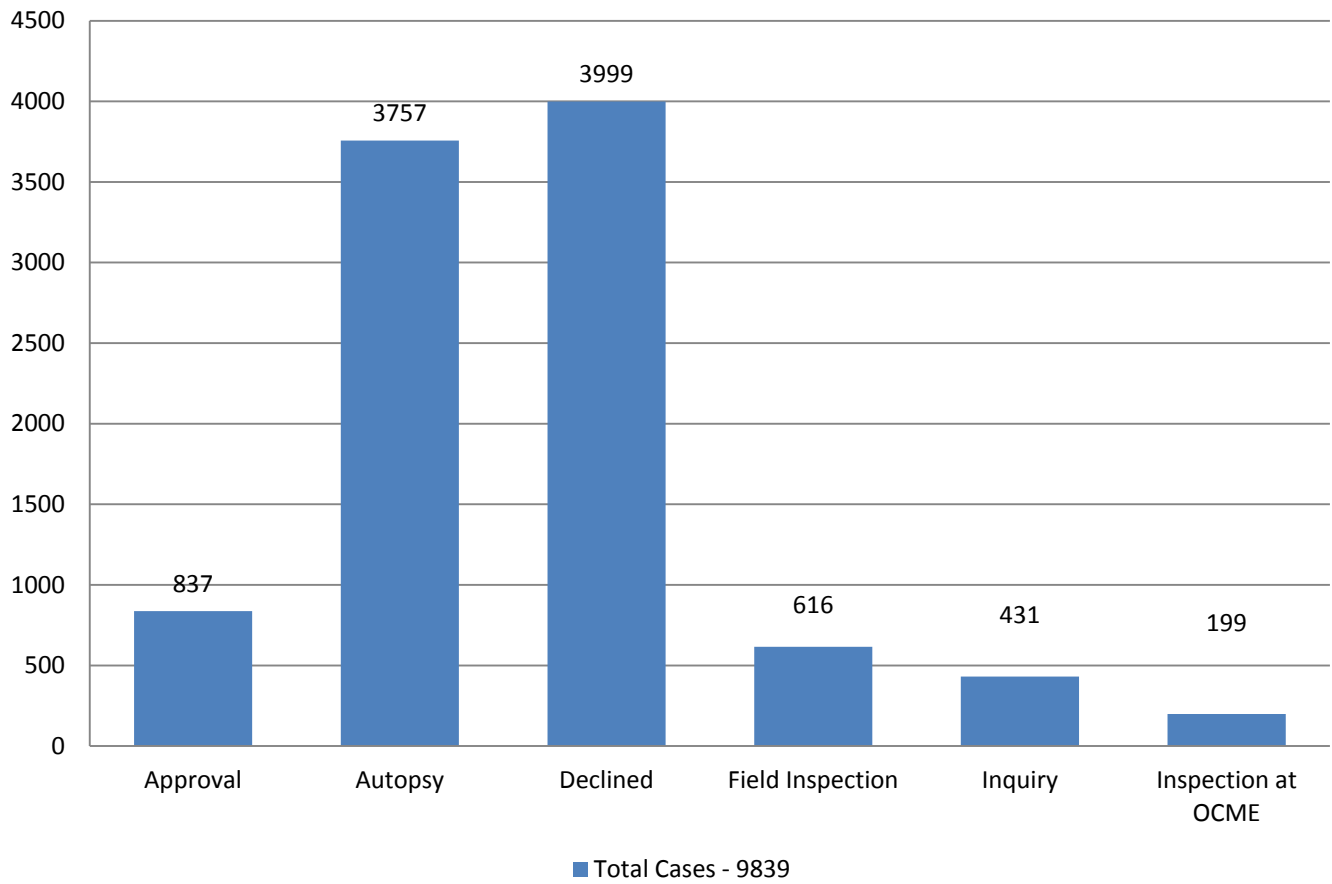
- Classified by Activity22
- Type of Vehicle23
- Classified by Age24
- Alcohol/Drug Results25
- Alcohol Levels in Cases Testing Positive26

Addendum

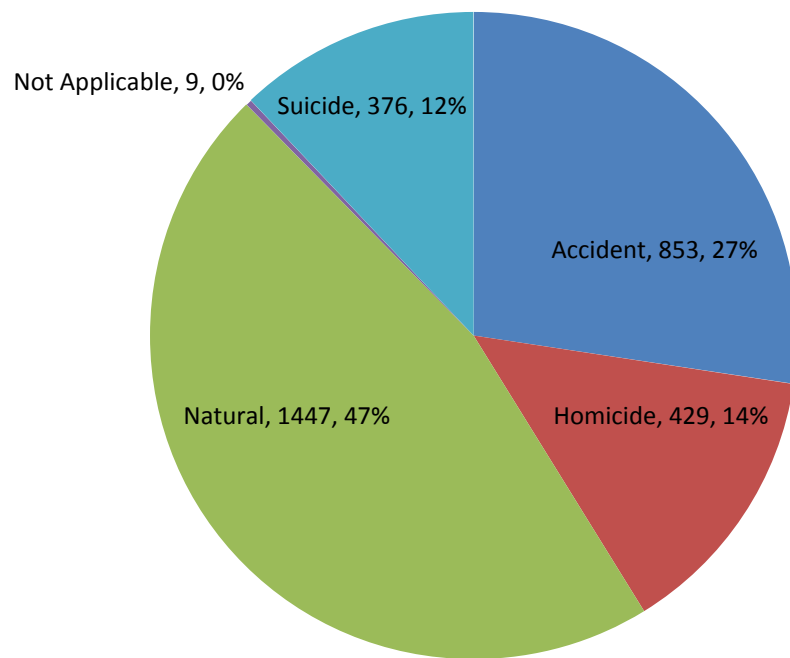
- Miscellaneous Data27

Cases Reported to OCME - 2011

Action Taken



2011 Medical Examiner Cases Autopsied*

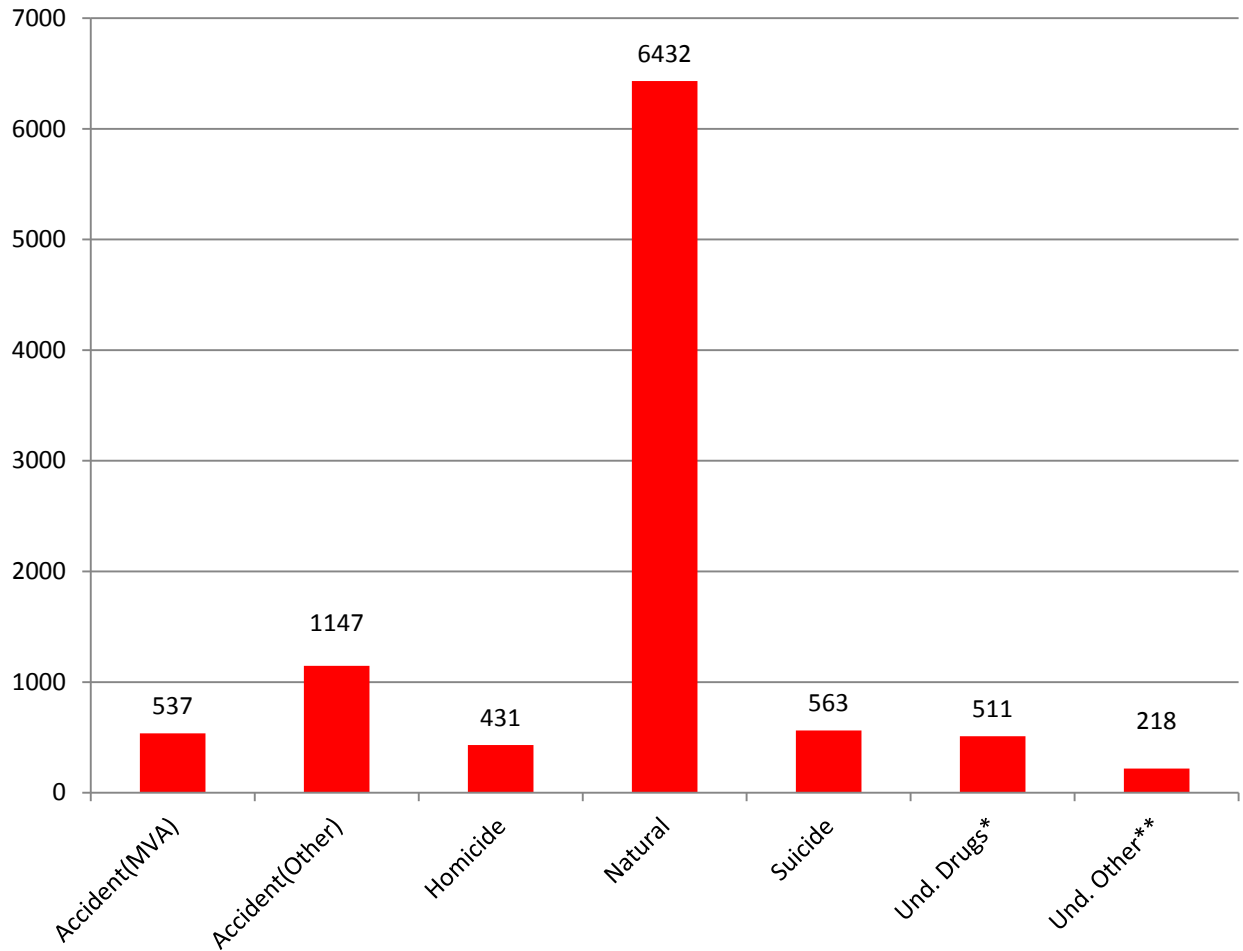


Total Cases Autopsied - 3757

*Nine cases were classified as "not applicable" (e.g. stillborn & non-human remains).

**Two homicides were not autopsied due to final disposition prior to Medical Examiner notification

2011 Cases Reported to OCME Manner of Death



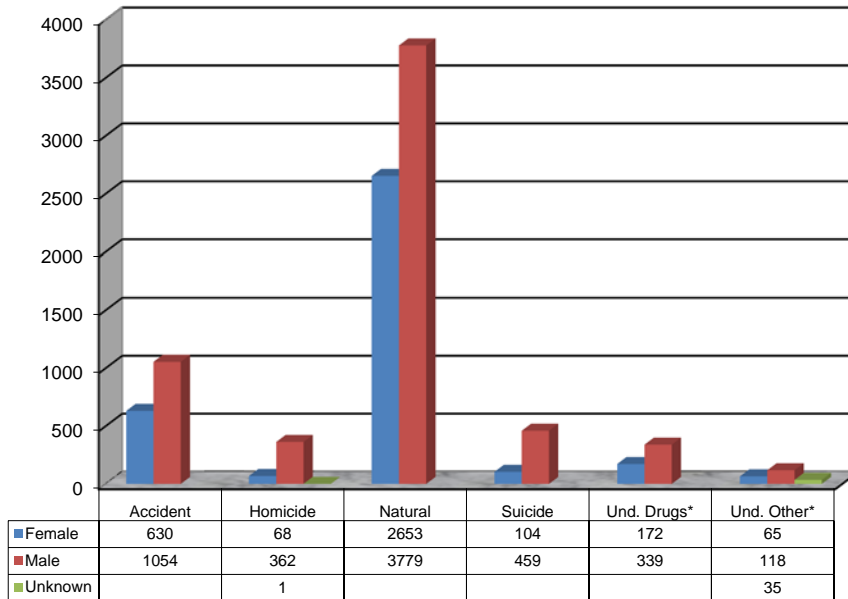
*Undetermined Manner: Drugs/Narcotics

** Undetermined Manner: Other

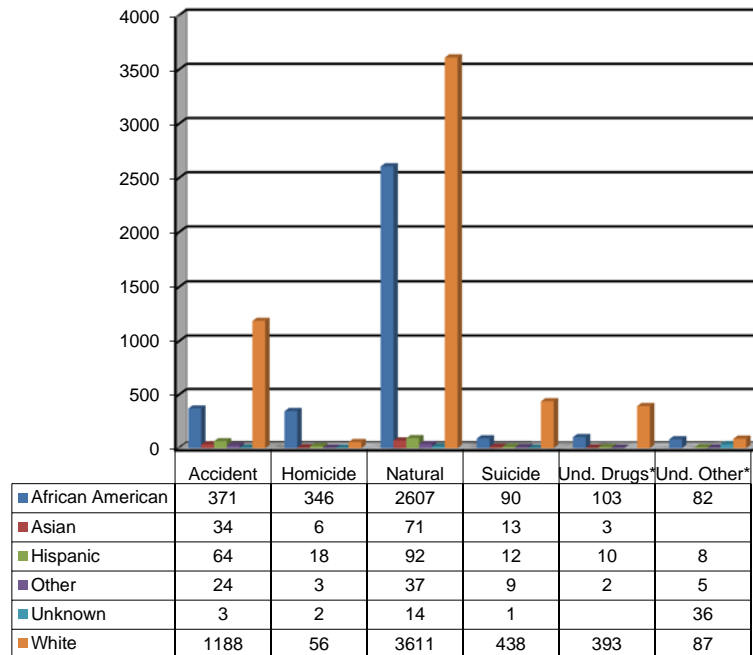
Total Cases - 9839

Manner of Death 2011

Classified by Sex



Classified by Race



*Undetermined Manner: Drugs/Narcotics

** Undetermined Manner: Other

Medical Examiner Cases - 2011 Cause and Manner of Death

Cause of Death	Accident	Homicide	Natural	Suicide	Undetermined	Total
<i>Infectious disease</i>						
AIDS			20			20
Other			39			39
<i>Malignant neoplasms (Cancer)</i>						
			390			390
<i>Endocrine and metabolic disease</i>						
Diabetes			68			68
Other			6			6
<i>Mental Disorders</i>						
Alcohol abuse			84			84
Other						0
<i>Nervous system disease</i>						
Meningitis			11			11
Seizure disorder			44			44
Other			63			63
<i>Circulatory system disease</i>						
Hypertensive cardiovascular disease			1818			1818
Arteriosclerotic cardiovascular disease			2222			2222
Cardiac arrhythmia			76			76
Cardiomyopathy			33			33
Pulmonary embolism	8		90			98
Cerebrovascular disease			11			11
Aneurysm			64			64
Hemorrhage			169			169
Other			163			163
<i>Respiratory system diseases</i>						
Respiratory distress syndrome			30			30
Pneumonia			130			130
Chronic obstructive pulmonary disease			65			65
Asthma			25			25
Other			61			61
<i>Digestive system disease</i>						
Fatty liver			2			2
Cirrhosis			59			59
Gastrointestinal hemorrhage			44			44
Other			74			74
<i>Congenital anomalies</i>						
			2			2
<i>Perinatal conditions</i>						
						0

Cause of Death	Manner of Death					Total
	Accident	Homicide	Natural	Suicide	Undetermined	
<i>Ill-defined conditions</i>						
Sudden Infant Death Syndrome			9			9
Other			2		43	45
<i>Traumatic injury</i>						
Head/Chest injuries	236	8			4	248
Multiple injuries	537	22		43	10	612
Blunt force	53	15				68
Gunshot wound	3	298		240	1	542
Sharp force/cutting		71		10		81
Fracture	133					133
Other trauma	201					201
<i>Poisoning</i>						
Alcohol intoxication	12				14	26
Drug intoxication/abuse	13			44	52	109
Alcohol and drug intoxication	2				24	26
Carbon monoxide	10			9	2	21
Cocaine intoxication	15				38	53
Cocaine and alcohol intoxication	1				7	8
Cocaine and narcotic intoxication					92	92
Narcotic intoxication	58		3	5	229	295
Narcotic and alcohol intoxication	20				83	103
Inhalant intoxication						0
<i>Asphyxiation</i>						
Airway obstruction/Aspirated stomach content	26					26
Hanging	1			140		141
Smoke inhalation	39					39
Strangulation/Asphyxiation		14		55		69
Suffocation						0
Drowning	66			13	9	88
Unspecified type of asphyxia	31					31
<i>Hypothermia</i>	41					41
<i>Hyperthermia</i>	34					34
<i>Thermal Injuries (Burns)</i>	12	1			3	16
<i>Electrocution</i>	7					7
<i>Other non-natural cause</i>	132	3		4	84	223
<i>Other natural cause</i>			547			547
<i>Unknown cause</i>					6	6
<i>Non-human remains</i>					28	28
<i>Accident during surgery</i>						0
TOTAL	1691	432	6424	563	729	9839

Manner of Death - 3 Year Comparison

Medical Examiner Cases*: Manner of Death, Maryland 2011

Manner of Death	Number	%
Accident	1684	17.1%
Homicide	431	4.4%
Natural	6432	65.4%
Suicide	563	5.7%
Undetermined	729	7.4%
Total	9839	100%

Medical Examiner Cases: Manner of Death, Maryland 2010

Manner of Death	Number	%
Accident	1630	16.1%
Homicide	456	4.5%
Natural	6591	65.2%
Suicide	526	5.2%
Undetermined	900	8.9%
Total	10103	100%

Medical Examiner Cases: Manner of Death, Maryland 2009

Manner of Death	Number	%
Accident	1613	15.8%
Homicide	486	4.7%
Natural	6703	65.5%
Suicide	562	5.5%
Undetermined	872	8.5%
Total	10236	100%

*Because of rounding, percentages do not necessarily total 100.

2011 Manner and Jurisdiction

2011 - Manner	Accident	Homicide	Natural	Suicide	Undetermined	Total
Allegany	51	7	94	11	13	176
Anne Arundel	96	13	639	45	75	868
Baltimore City	463	219	2196	79	226	3183
Baltimore County	231	20	538	83	91	963
Calvert	14	1	102	7	13	137
Caroline	8	1	11	2	9	31
Carroll	34	0	68	21	9	132
Cecil	37	3	62	25	23	150
Charles	27	2	64	14	14	121
Dorchester	5	1	33	3	2	44
Frederick	46	3	117	15	27	208
Garrett	14	2	17	0	1	34
Harford	61	7	286	25	30	409
Howard	47	6	121	22	20	216
Kent	7	1	22	1	2	33
Montgomery	190	21	550	88	43	892
Out-Of-State	0	0	5	0	0	5
Prince George's	195	107	977	47	59	1385
Queen Anne's	8	3	21	7	6	45
Saint Mary's	23	2	49	10	9	93
Somerset	1	3	22	2	2	30
Talbot	13	0	37	5	3	58
Washington	51	3	122	29	23	228
Wicomico	45	5	209	12	18	289
Worcester	17	1	70	10	11	109
Total	1684	431	6432	563	729	9839

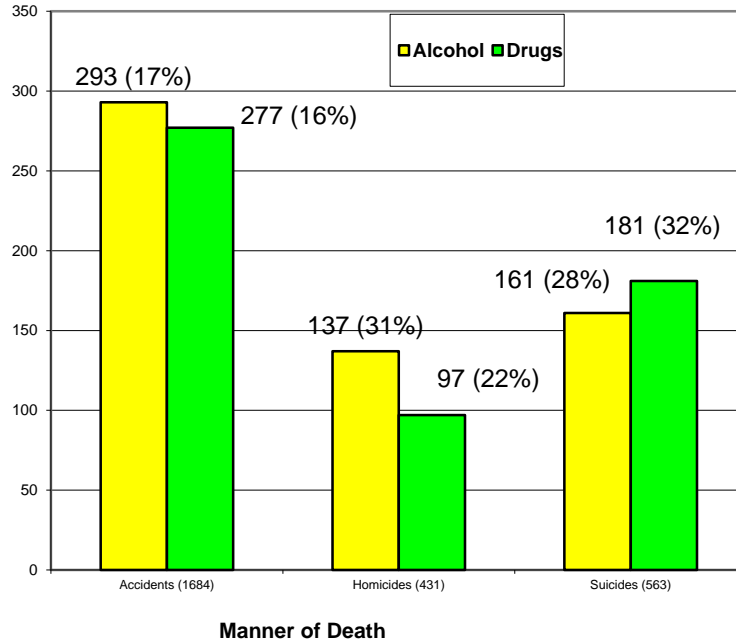
2011 Case Type and Jurisdiction

2011 - Case Type	Approval	Autopsy	Decline	Field Inspection	Inquiry	OCME Inspection	Total
Allegany	29	84	32	18	12	1	176
Anne Arundel	32	302	429	54	31	20	868
Baltimore City	293	1050	1500	94	191	55	3183
Baltimore County	146	408	260	70	50	29	963
Calvert	2	55	65	13	1	1	137
Caroline	2	24	1	2	0	2	31
Carroll	18	70	20	12	4	8	132
Cecil	1	107	22	13	5	2	150
Charles	4	72	29	13	0	3	121
Dorchester	0	14	14	12	4	0	44
Frederick	20	118	35	15	14	6	208
Garrett	6	18	5	5	0	0	34
Harford	14	157	186	27	15	10	409
Howard	26	90	67	18	8	7	216
Kent	2	16	11	2	2	0	33
Montgomery	110	281	372	63	45	21	892
Out-Of-State	0	1	0	4	0	0	5
Prince George's	61	527	675	91	17	14	1385
Queen Anne's	3	29	3	5	3	2	45
Saint Mary's	6	54	22	6	2	3	93
Somerset	0	12	10	6	0	2	30
Talbot	7	22	17	4	7	1	58
Washington	30	101	57	27	10	3	228
Wicomico	22	98	131	28	5	5	289
Worcester	3	47	36	14	5	4	109
Total	837	3757	3999	616	431	199	9839

2011 Toxicology Testing

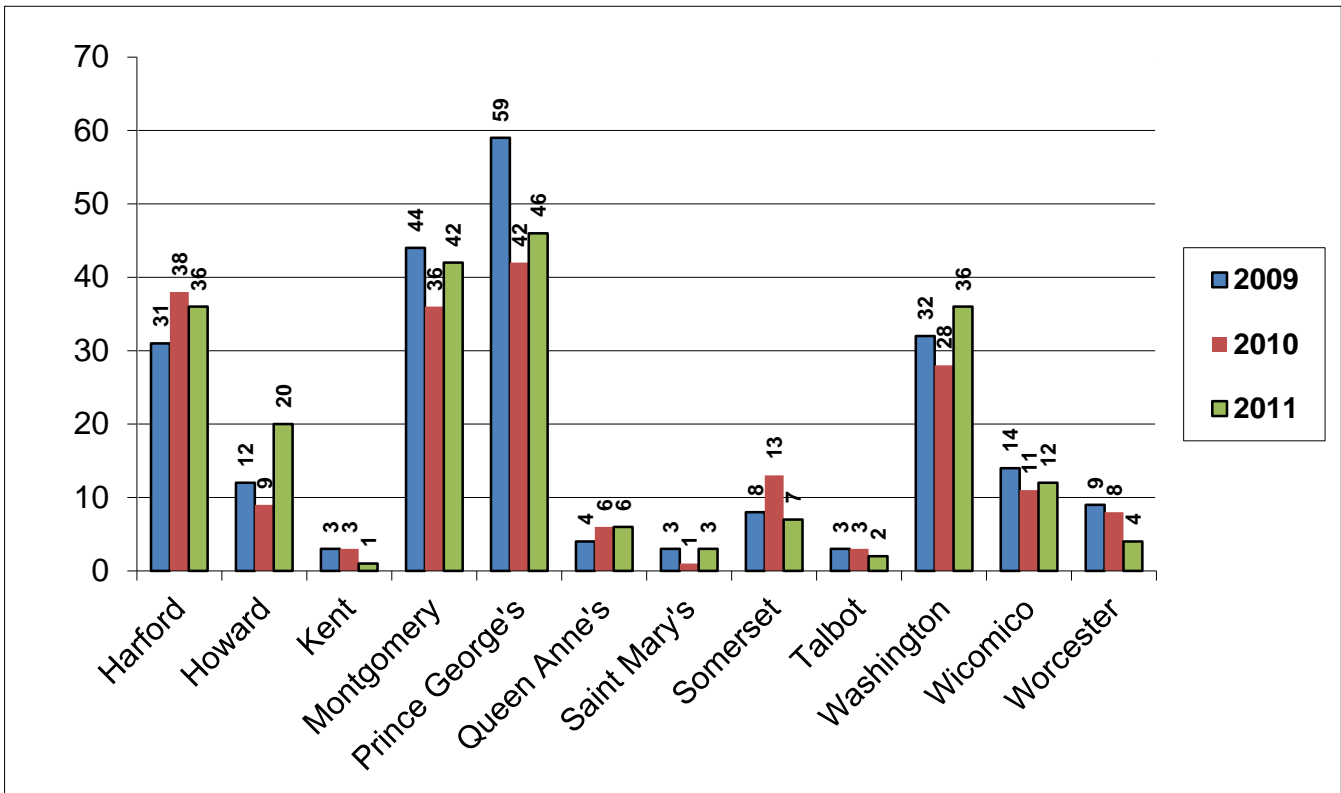
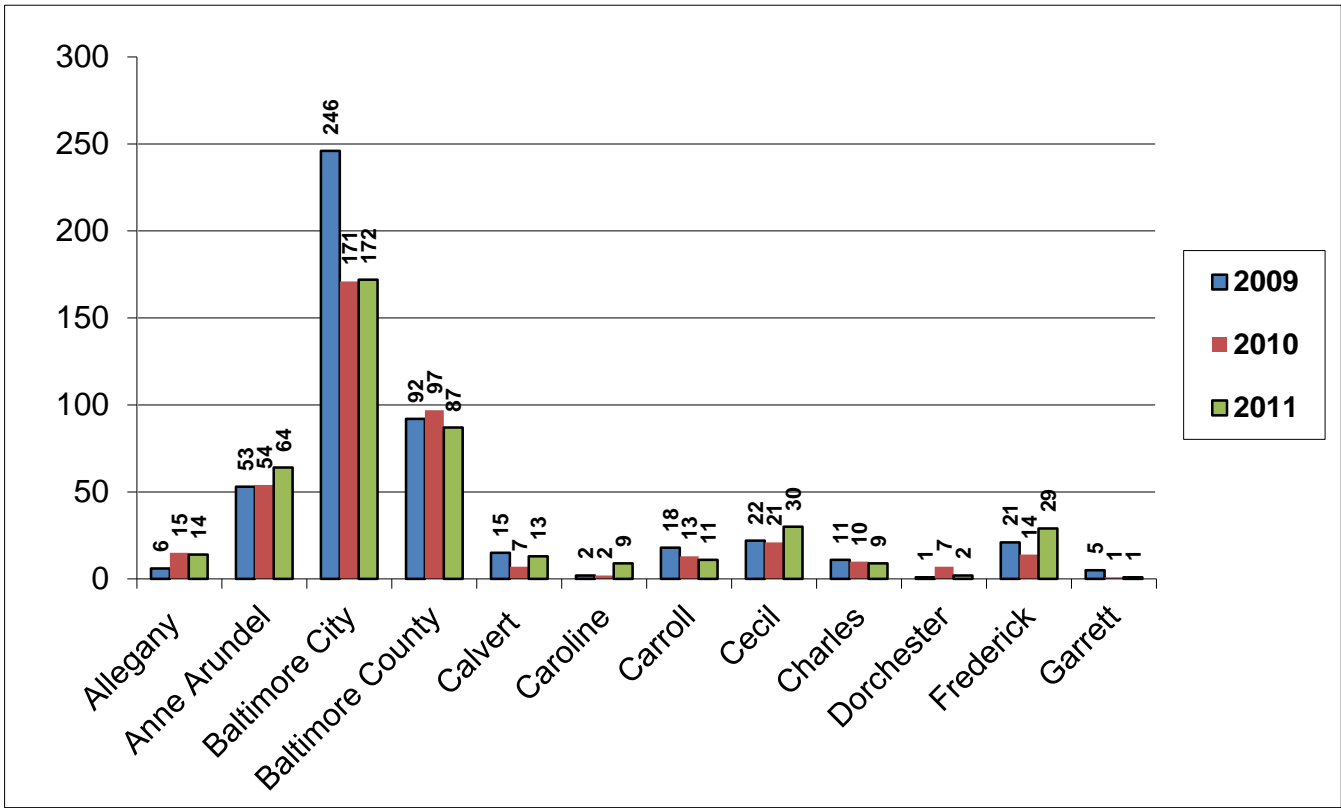
of Cases Positive for Alcohol and/or Drugs*
(Percentage of the Manner of Death)

*Drugs include heroin, morphine, cocaine, methadone and phencyclidine.

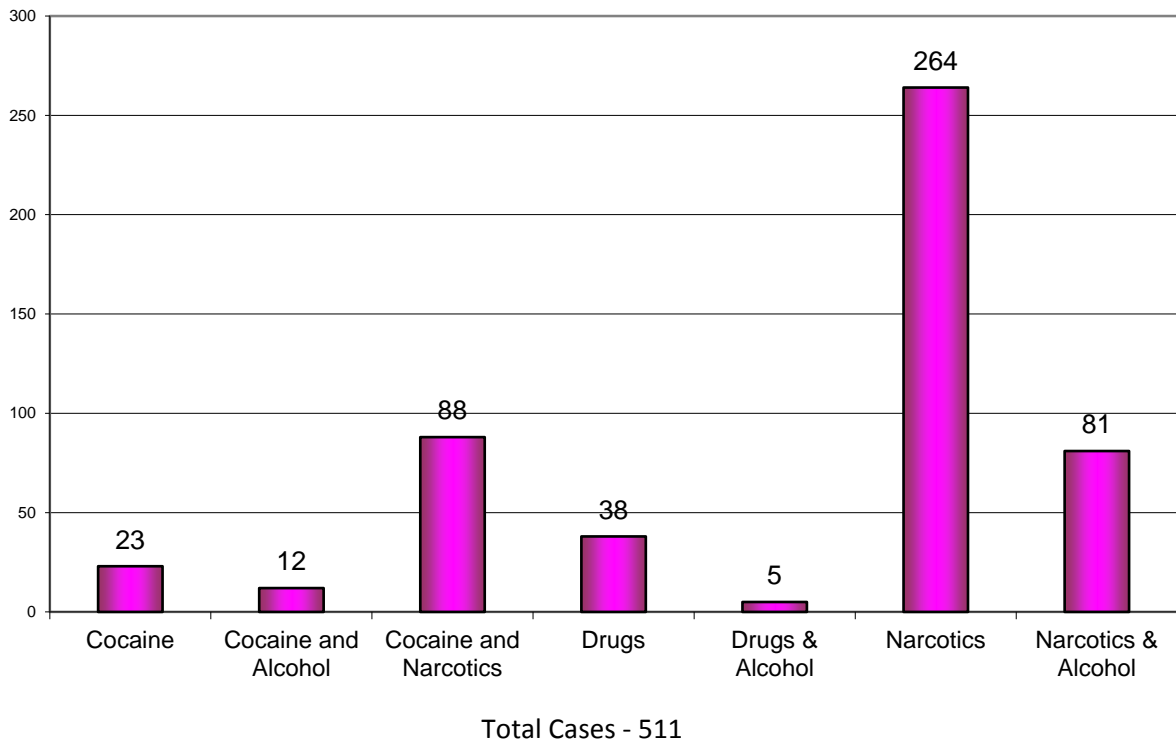


*Abused Drugs include Alprazolam, Amphetamine, Benzoylcegonine, Brompheniramine, Chlorpheniramine, Cocaine, Codeine, Diazepam, Diphenhydramine, Doxylamine, Fentanyl, Heroin, Hydrocodone, Hydroxyzine, Meperidine, Methadone, Methamphetamine, Methylenedioxyamphetamine, Methylenedioxymethamphetamine, Morphine, Nordiazepam, Normeperidine, Oxycodone, Phencyclidine, Propoxyphene, Tramadol, and Zolpidem. This list used in previous years was only Cocaine, Heroin, Methadone, Morphine and Phencyclidine.

Drug Abuse Deaths 3 Year Comparison by Jurisdiction 2009-2011



**2011 Drug Abuse Deaths
Undetermined Manner**

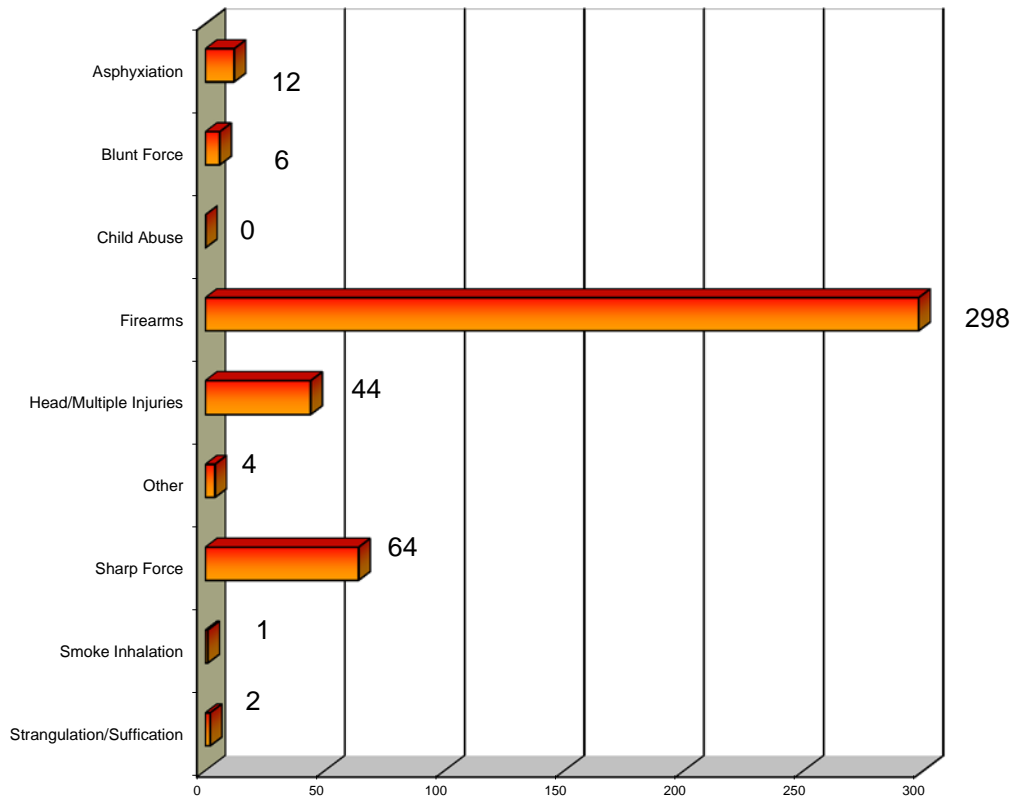


Cocaine Tests: Benzoyllecgonine and Cocaine

Drug Tests: Alprazolam, Amphetamine, Brompheniramine, Chlorpheniramine, Diazepam, Diphenhydramine, Doxylamine, Hydroxyzine, Methamphetamine, Methylenedioxyamphetamine, Methylenedioxymethamphetamine, Nordiazepam, Phencyclidine, Propoxyphene and Zolpidem

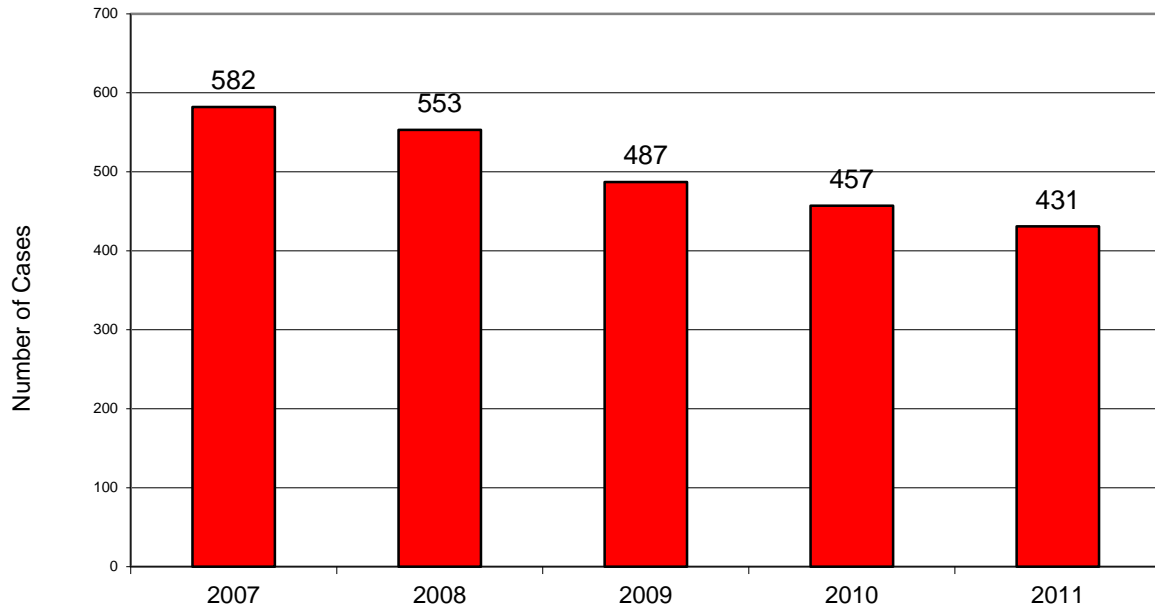
Narcotic Tests: Codeine, Fentanyl, Heroin, Hydrocodone, Meperidine, Methadone, Morphine, Normeperidine, Oxycodone and Tramadol

2011 Homicide Deaths Cause of Death

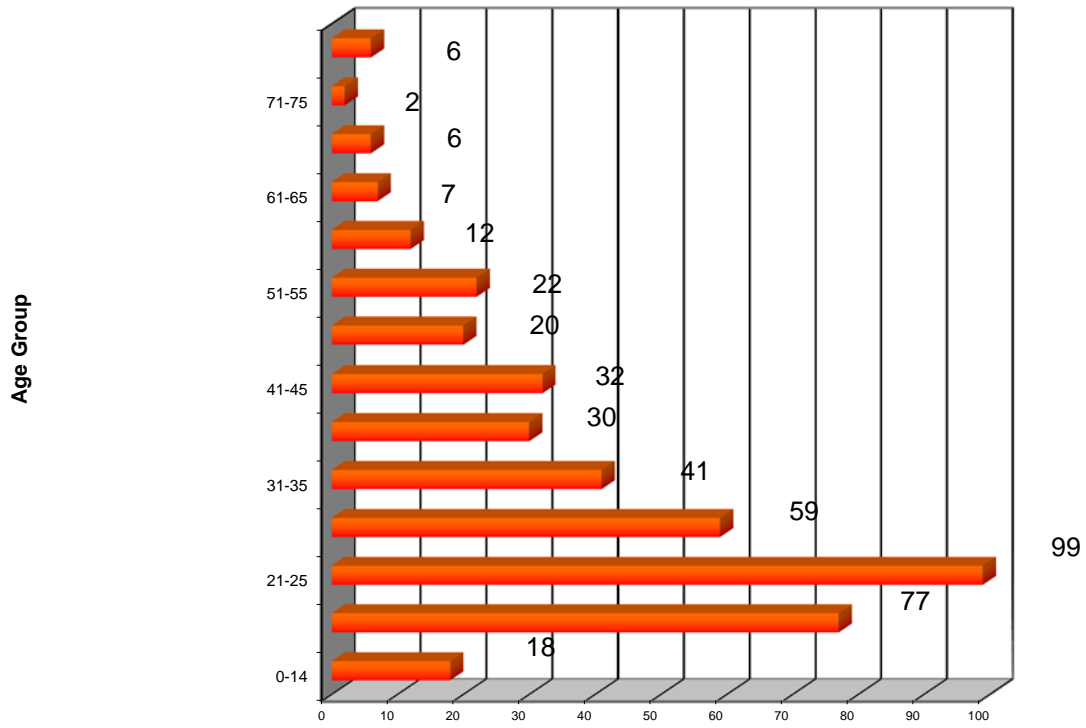


Total Deaths - 431

Homicides 5 Year Comparison 2007 - 2011

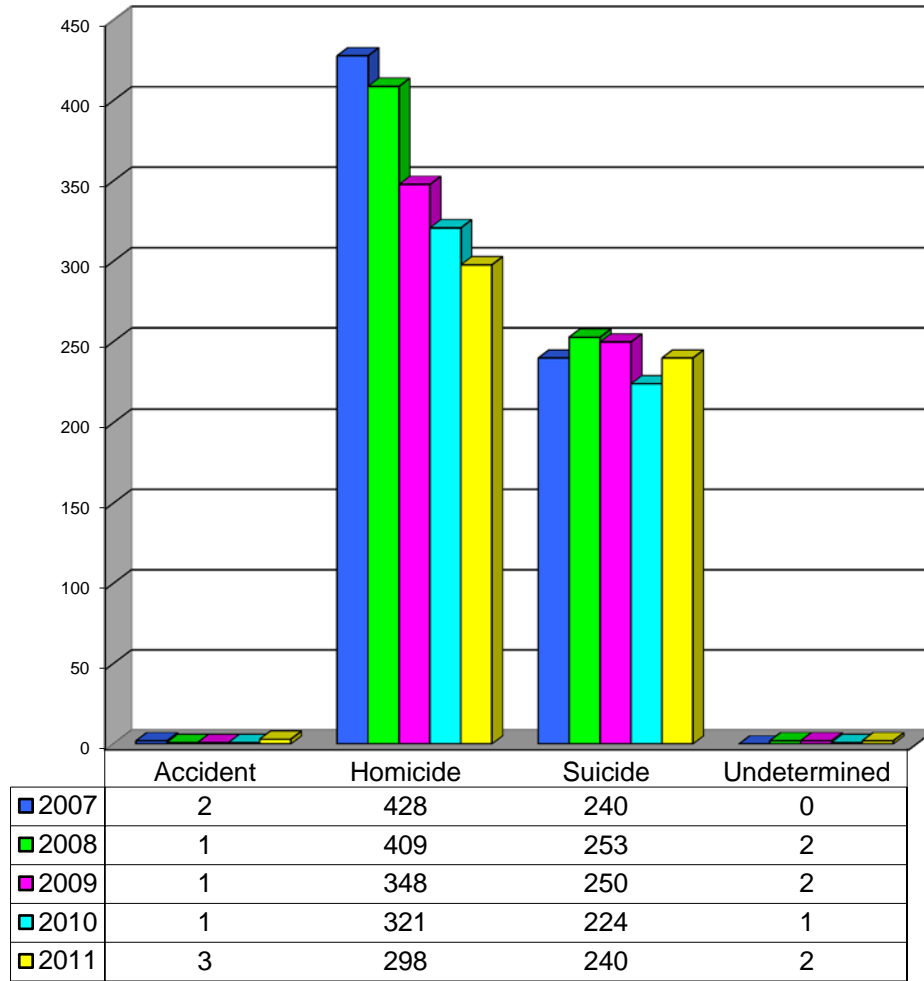


2011 Homicide Deaths by Age

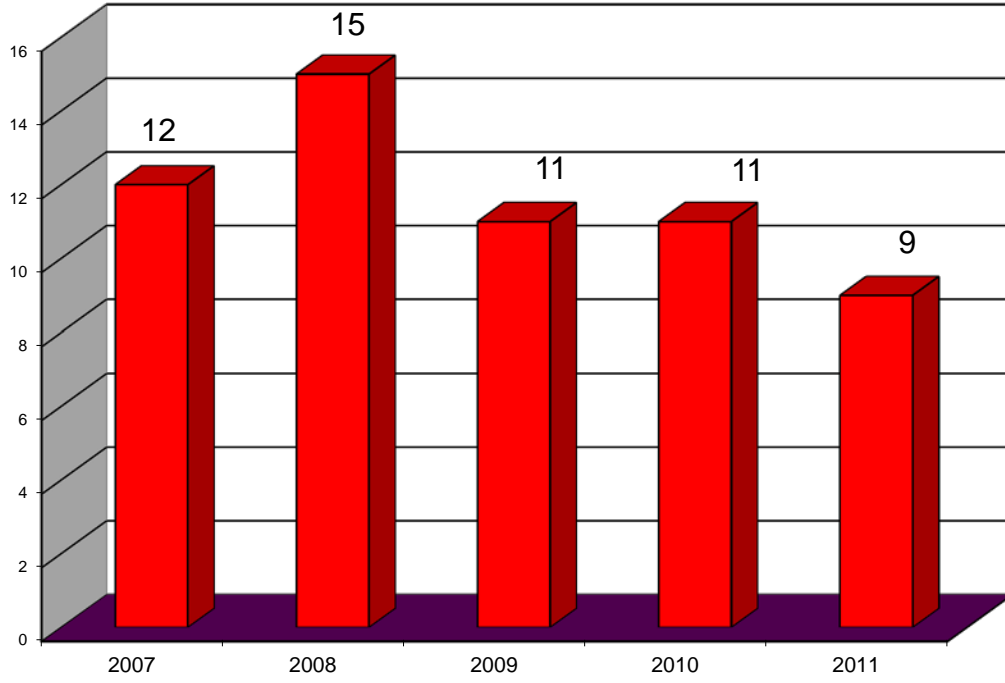


Total Deaths - 431

Firearm Deaths 2007 - 2011

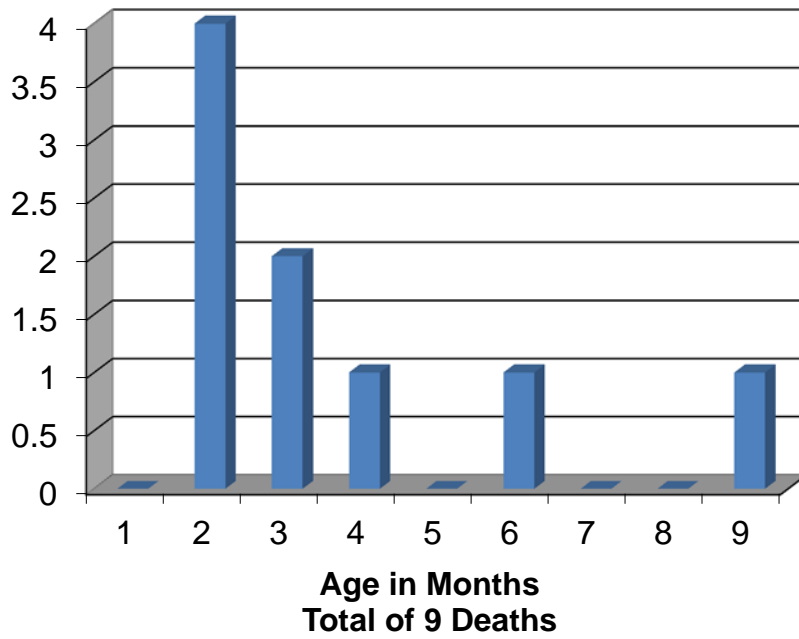


SIDS Deaths 2007 - 2011 Comparison

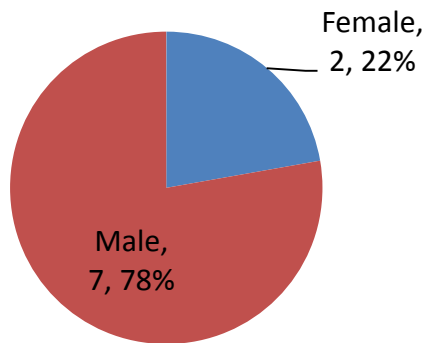


Sudden Infant Death Syndrome - 2011

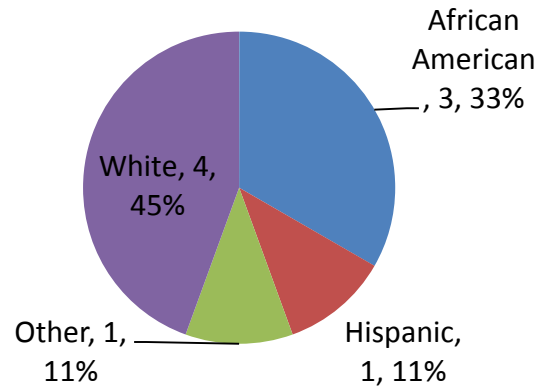
Classified by Age



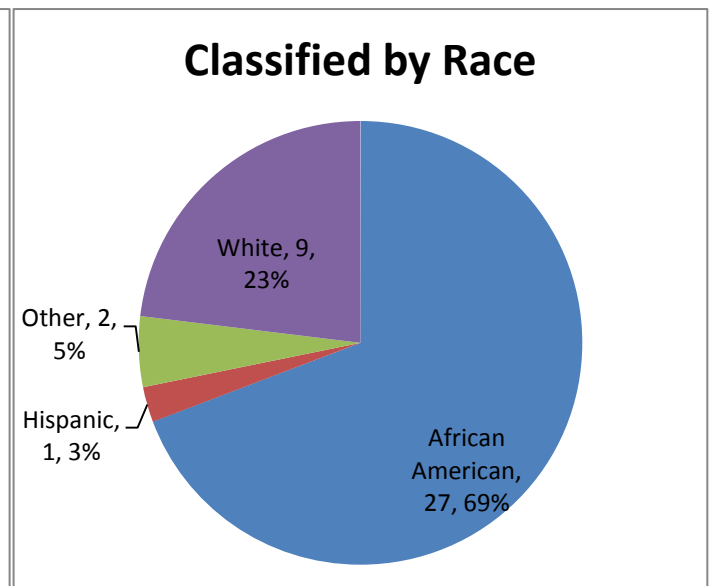
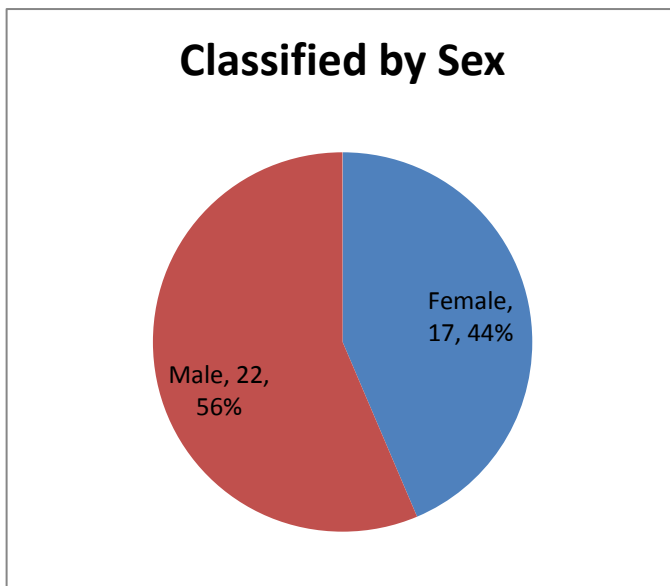
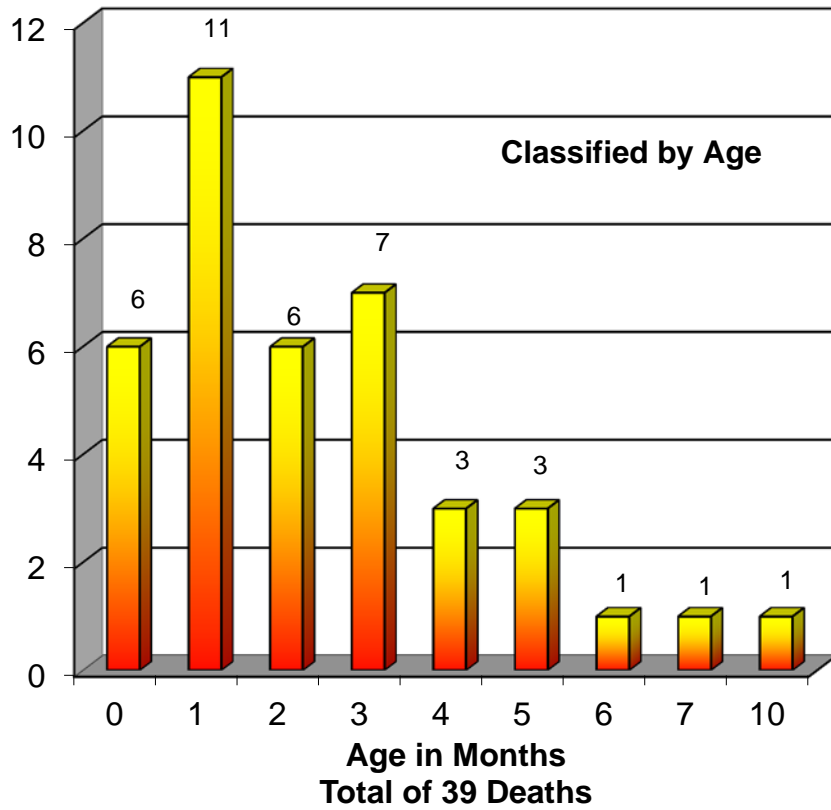
Classified by Sex



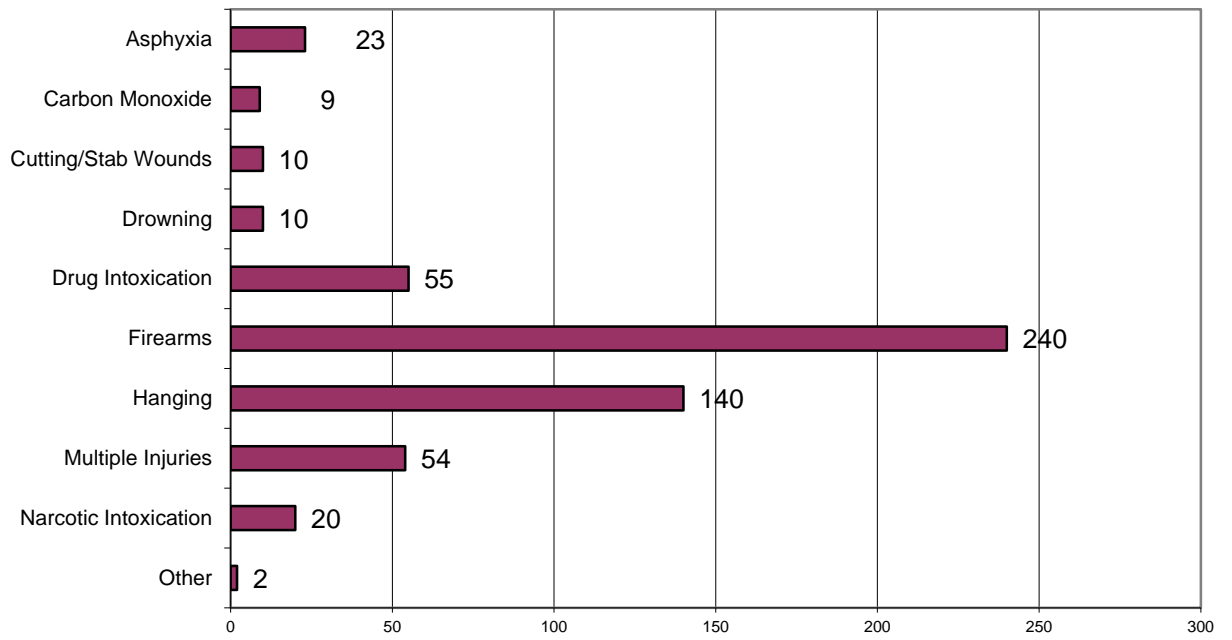
Classified by Race



Sudden Unexplained Death in Infancy - 2011

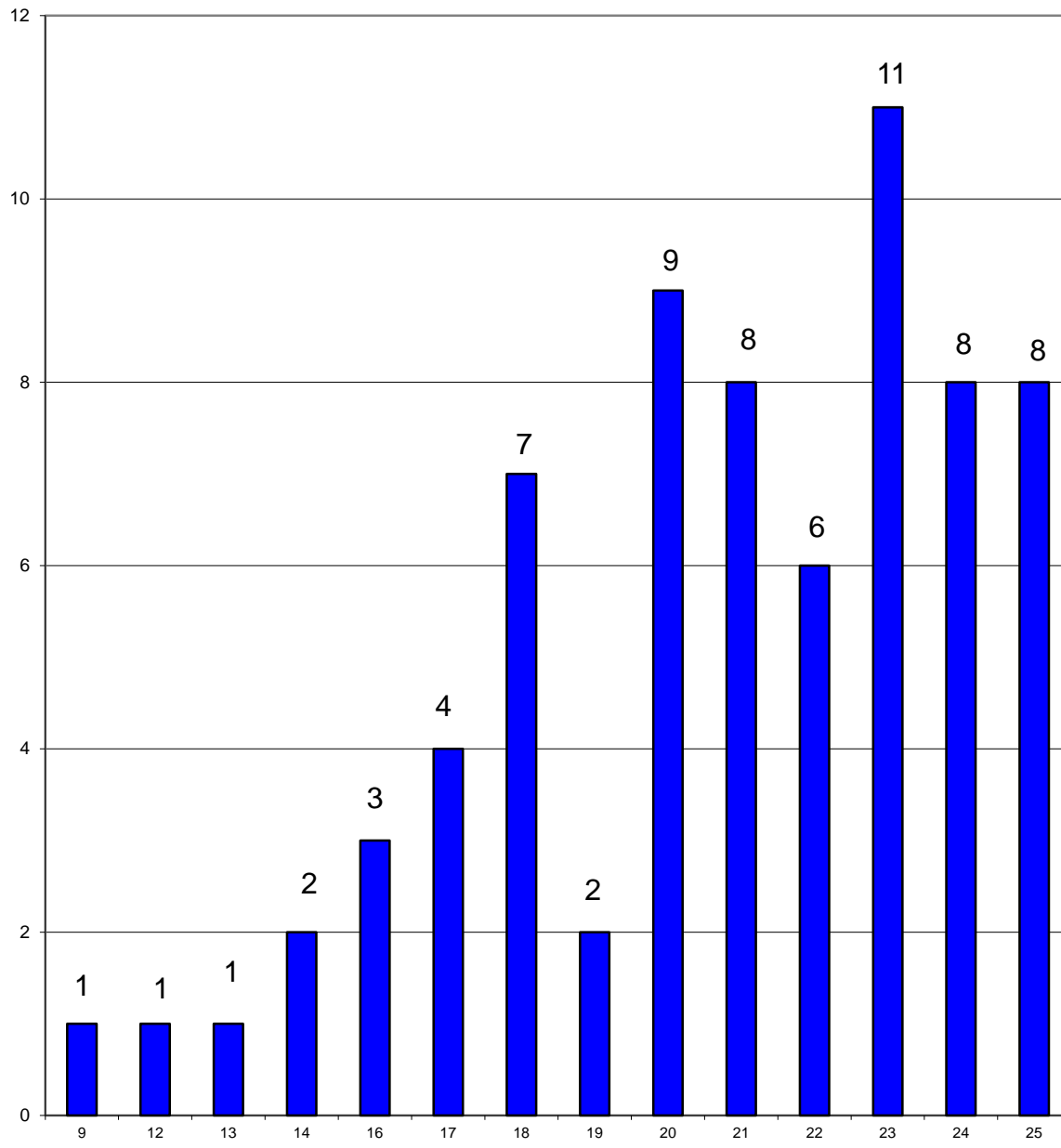


2011 Suicide Deaths Classified by Cause of Death



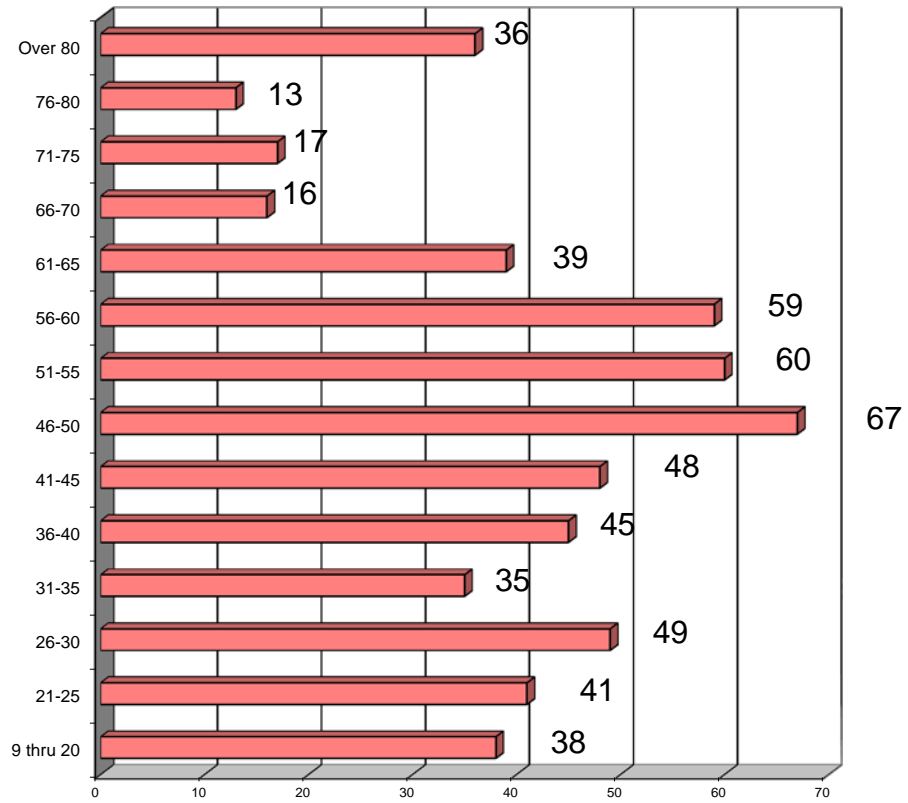
Total Cases - 563

**2011 Youth Suicides
25 Years of Age and Under**



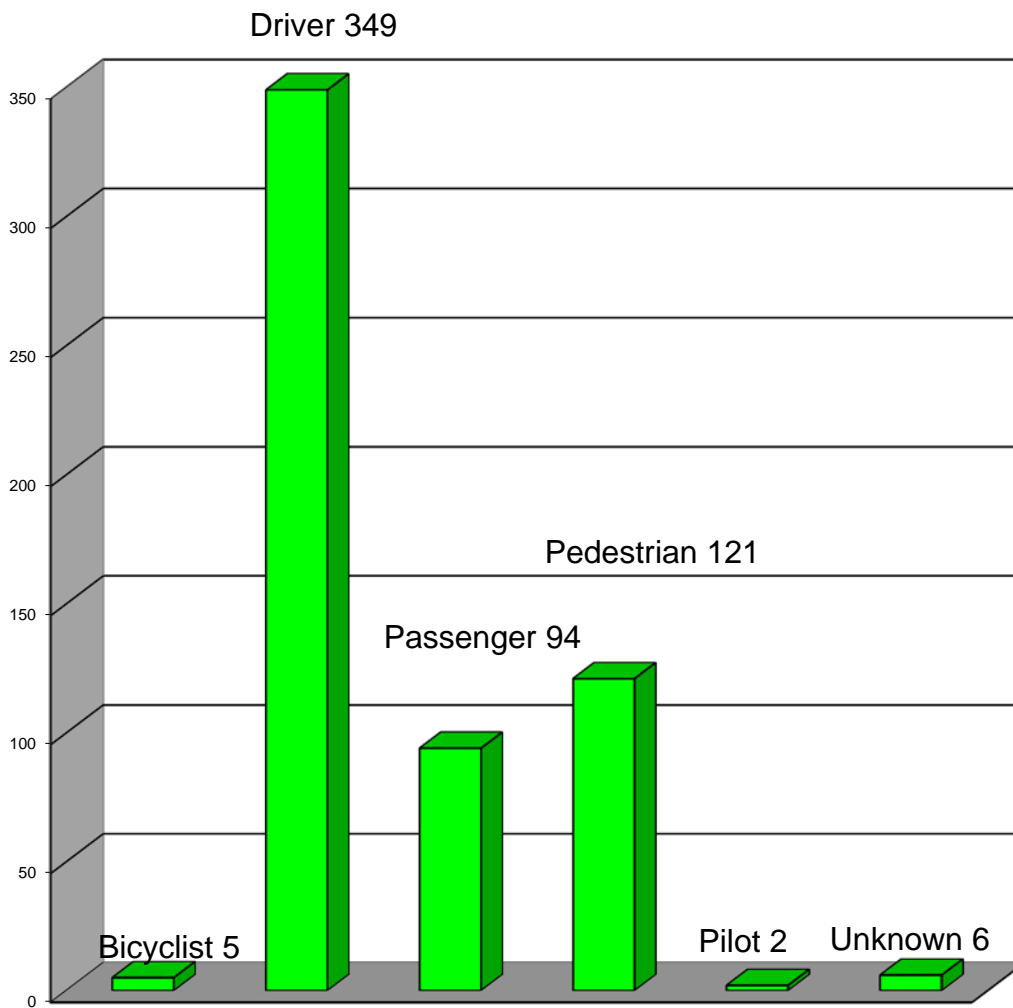
Age
Total Cases - 71

2011 Suicide Deaths by Age



Total Deaths - 563

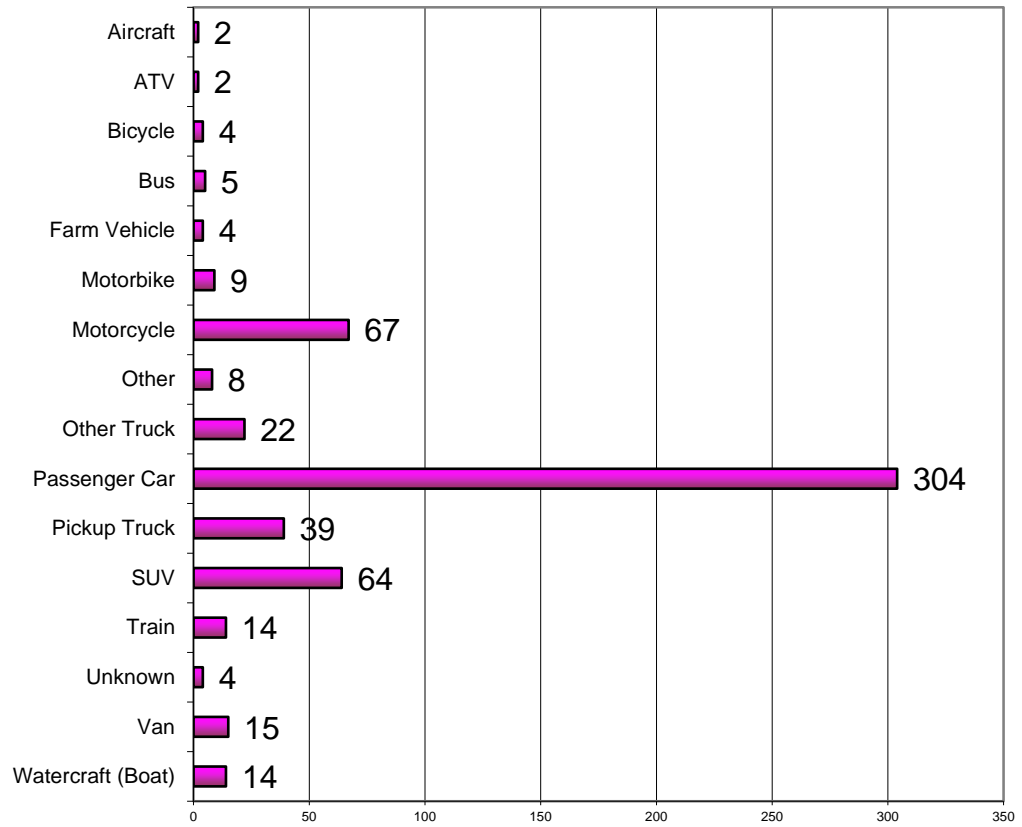
2011 Transportation Accidents* Classified by Activity



*Includes motor vehicles, boats, planes, bicycles and trains

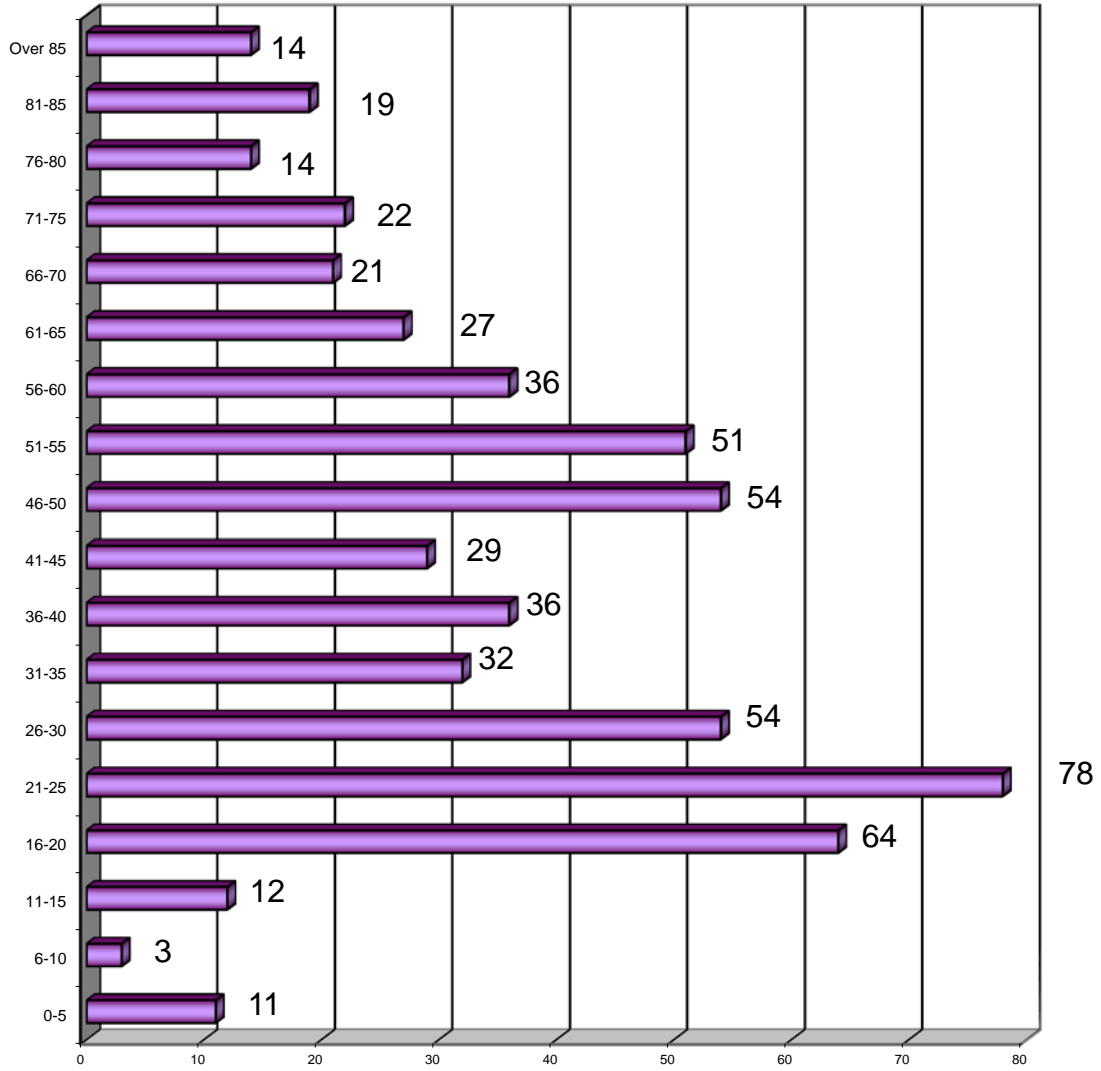
Total Cases - 577

2011 Transportation Deaths Type of Vehicle



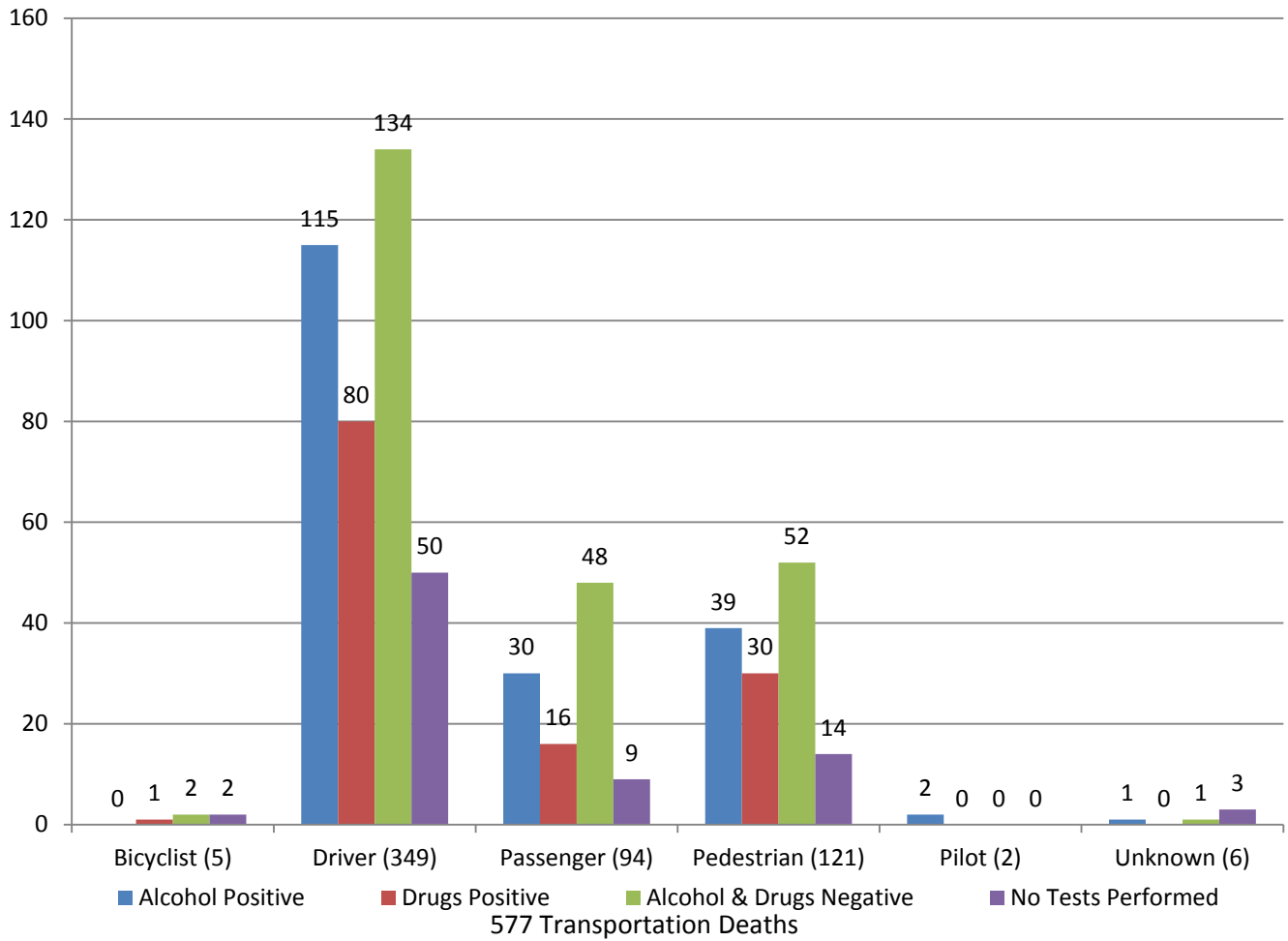
Total Cases - 577

2011 Transportation Deaths by Age

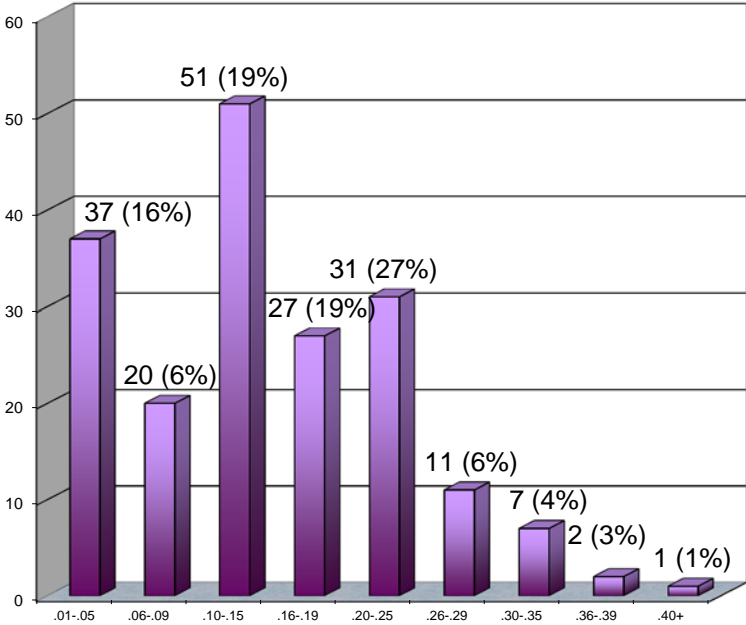


Total Cases - 577

2011 Transportation Accidents Alcohol/Drug Results



**2011 Transportation Deaths
 Blood Alcohol Concentration in 187 Cases
 37%* Tested Positive**



577 Transportation Deaths
 312 Negative for Alcohol
 78 No Testing Performed

*Percent based on total cases tested for alcohol

ADDENDUM

Miscellaneous Data

1. Number of autopsies 2,916
Number of partial autopsies 843
2. Organ donations 62
3. Unclaimed bodies released to State Anatomy Board 67
4. Exhumations None
5. Bodies transported to the OCME 3,942

Changes for 2011

1. Data series are now in alphabetical order. This change is to facilitate the automation of the report.
2. Date range for the report is January 1, 2011-December 31, 2011.
 - a. The criterion for this selection is the date the case was created.
 - i. In previous years, date of death was used to select the case. This change is to align the statistics with the work.
3. Definition of drug has been updated and expanded.
 - a. Abused drugs: alprazolam, amphetamine, benzoylecgonine, brompheniramine, chlorpheniramine, cocaine, codeine, diazepam, diphenhydramine, doxylamine, fentanyl, heroin, hydrocodone, hydroxyzine, meperidine, methadone, methamphetamine, methylenedioxyamphetamine, methylenedioxymethamphetamine, morphine, nordiazepam, normeperidine, oxycodone, phencyclidine, propoxyphene, tramadol, and zolpidem.
 - i. In previous years, abused drugs were cocaine, heroin, methadone, morphine and phencyclidine.
 - b. Drug Tests
 - i. Cocaine tests: benzoylecgonine and cocaine
 - ii. Drug tests: alprazolam, amphetamine, brompheniramine, chlorpheniramine, diazepam, diphenhydramine, doxylamine, hydroxyzine, methamphetamine, methylenedioxyamphetamine, methylenedioxymethamphetamine, nordiazepam, phencyclidine, propoxyphene and zolpidem.
 - iii. Narcotic tests: codeine, fentanyl, heroin, hydrocodone, meperidine, methadone, morphine, normeperidine, oxycodone and tramadol.

Revised February 1, 2013

Page 9: Heroin was added to the abused drug footnote.

Page 11: Morphine was moved from drug tests to narcotic tests. Heroin was added to narcotic tests.

This revised report reflects any changes made to the data after the initial annual report was released.