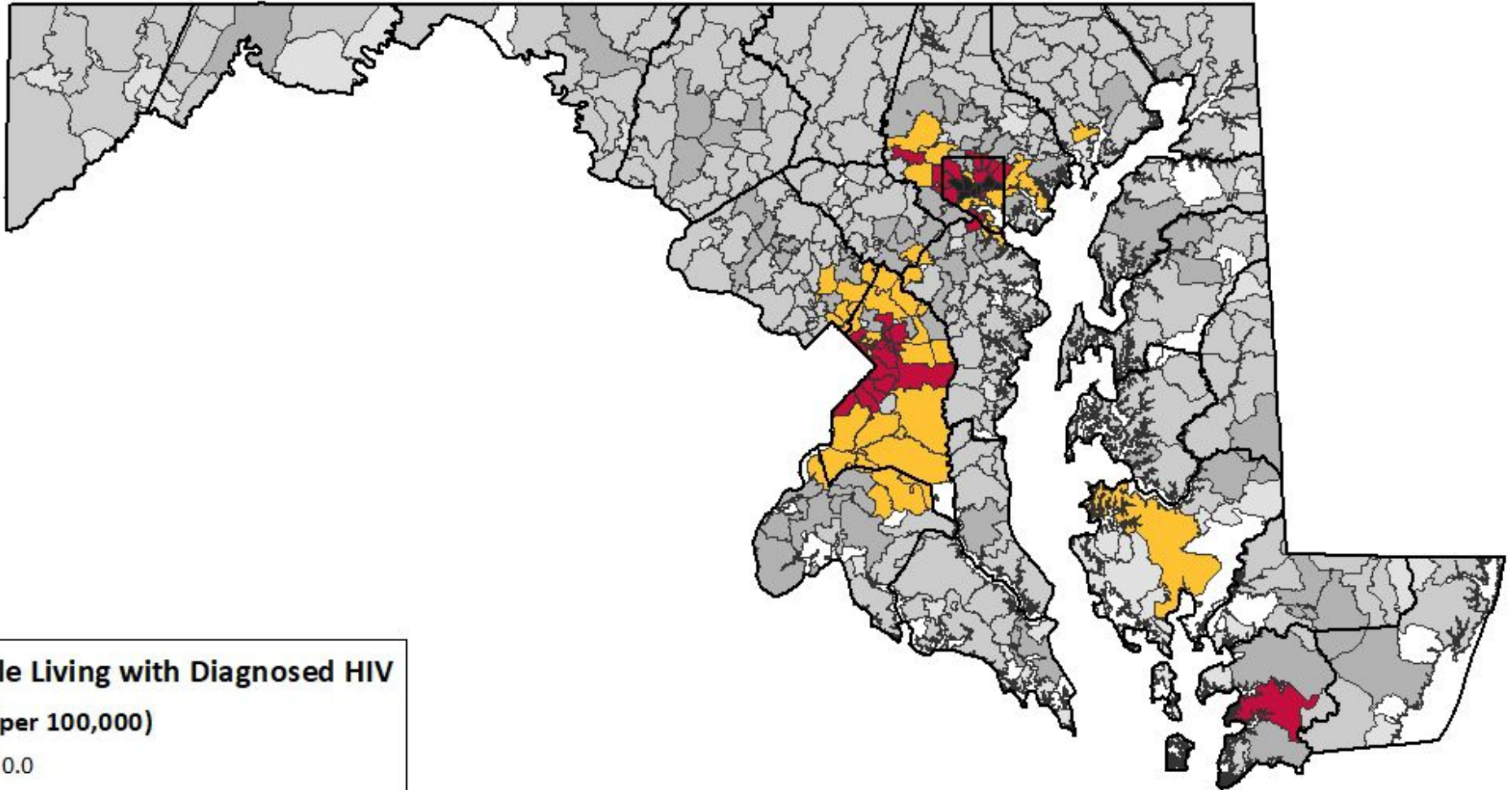


# People Living with Diagnosed HIV by ZIP Code, Maryland, 2020



## People Living with Diagnosed HIV

Rate (per 100,000)

- 0.0
- 0.1 - 294.6
- 294.7 - 575.2
- 575.3 - 1,096.2
- 1,069.3 - 2,074.0
- 2,074.1 - 3,565.3
- Zip code <1,000 Residents
- County Boundary

Source: Center for HIV Surveillance, Epidemiology, and Evaluation, Maryland Department of Health. Data reported through June 30, 2021 and represents adults/adolescents (age 13+) only. Address data based upon the most recent case report form or laboratory test reported since January 1, 2009. Data for ZIP Codes with less than 1,000 residents in the 2020 US Census Bureau Population Estimates have been suppressed for privacy.